

The METRO Blue Line Extension will connect northwest communities and jobs to southern destinations, providing a one-seat ride between Brooklyn Park and the airport and Mall of America. The Blue Line Extension is expected to open in 2023.

The Blue Line Extension will serve these areas:

- Downtown Minneapolis
- Golden Valley
- Robbinsdale
- Crystal
- Brooklyn Park

By the Numbers

- 13 miles long
- 10-11 new stations
- 30,000+ estimated daily ridership by 2030
- 70,000 approximate population along the corridor
- Connects to 3 existing rail lines (Green Line LRT, Blue Line LRT, and Northstar Commuter Rail)
- Expected opening year: 2023

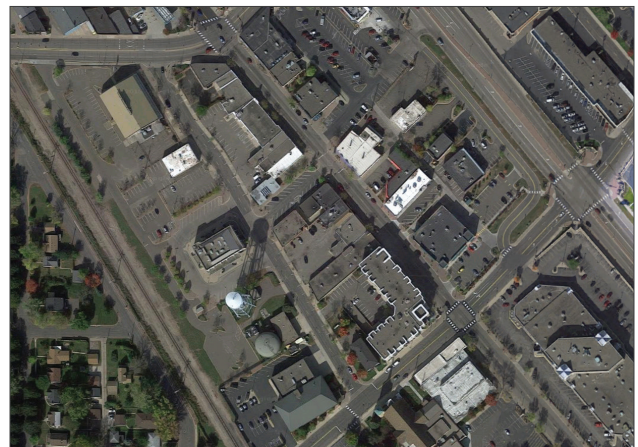


Featured Projects and Plans



Target Northern Campus: Expected to house 7,000 employees once complete.

(Image from ryancompanies.com.)

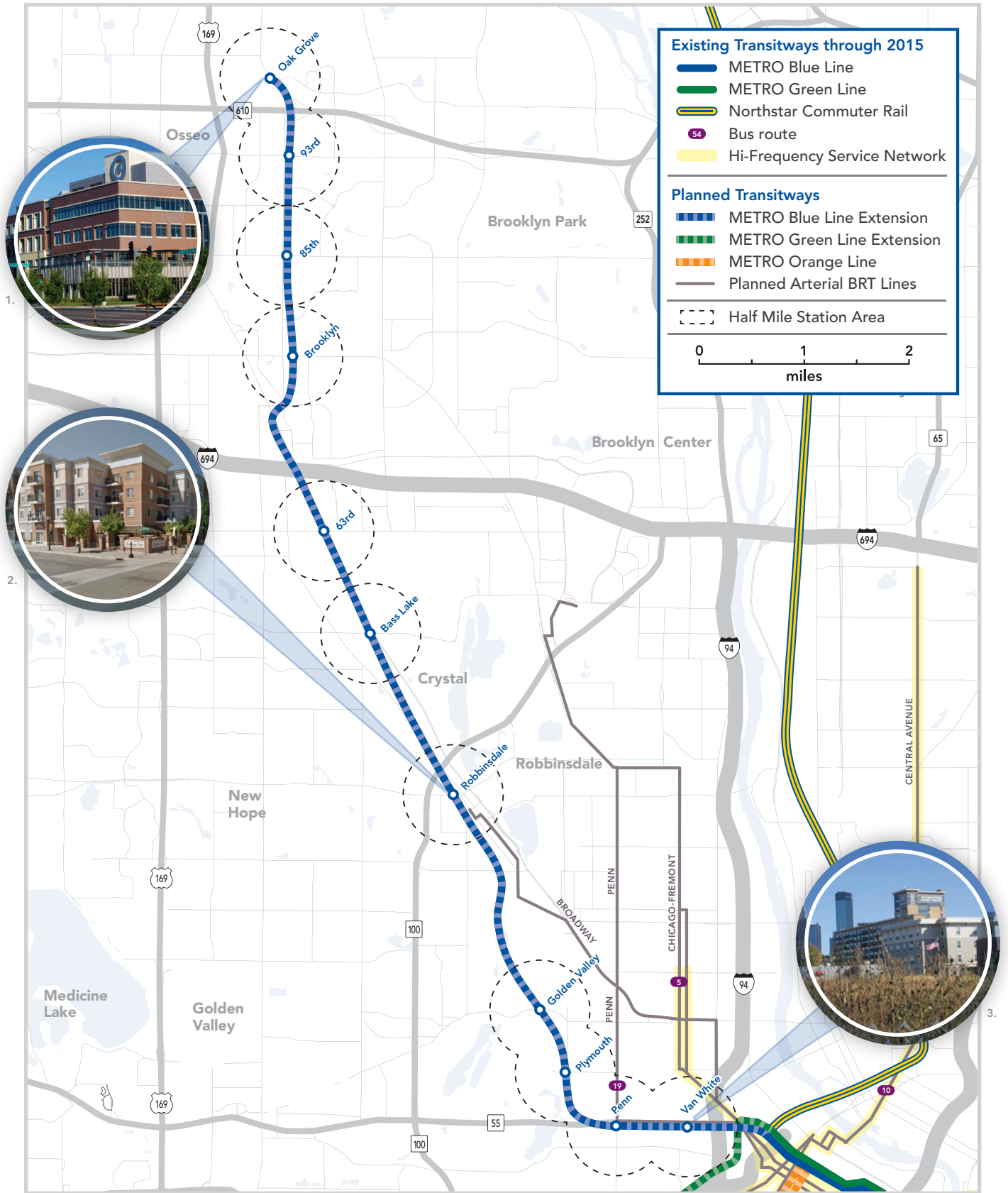


Downtown Robbinsdale: Currently undergoing a TOD visioning process to determine a plan for new transit features and connectivity.

(Image from Google Maps)

METRO Blue Line EXTENSION

The METRO Blue Line Extension, also known as the Bottineau Transitway, will connect the region's northwest suburbs to Minneapolis and the regional transit system.



1. Image from corridorsopportunity.org
2. Image from Google Street View

3. Rendering from METRO Blue Line Extension simulation video

Last updated February 2018