

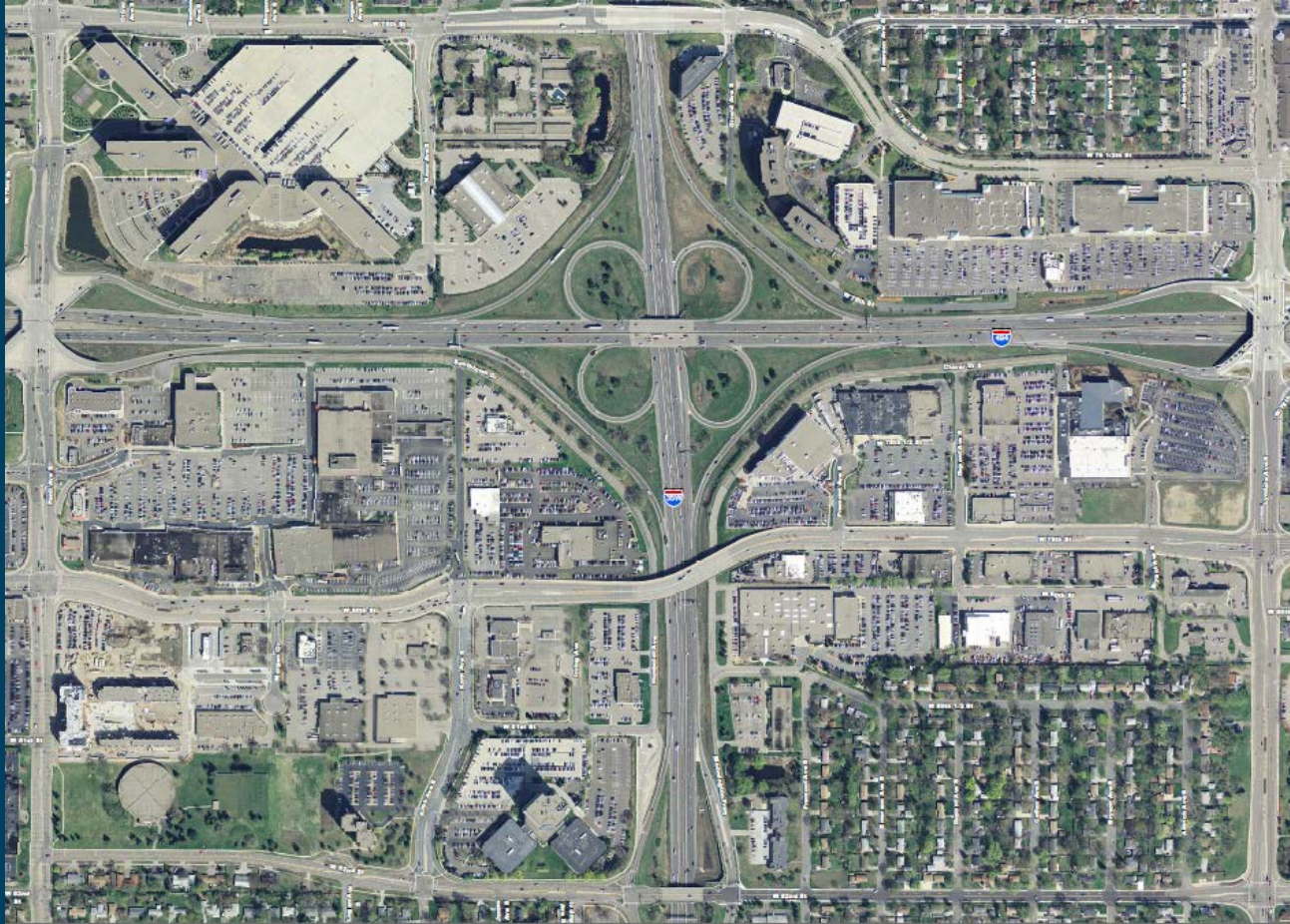
Interchange Vision Layout Development with I-35W Transit Station

Richfield City Council Meeting
September 24, 2013

Your Destination...Our Priority



Study Area/Needs



Needs

- Built in 1960s
- 510,000 users per day
- Six hours of congestion daily
- 125 bus trips daily
- Eighth highest crash cost in state
- Storm water issues

 METRO

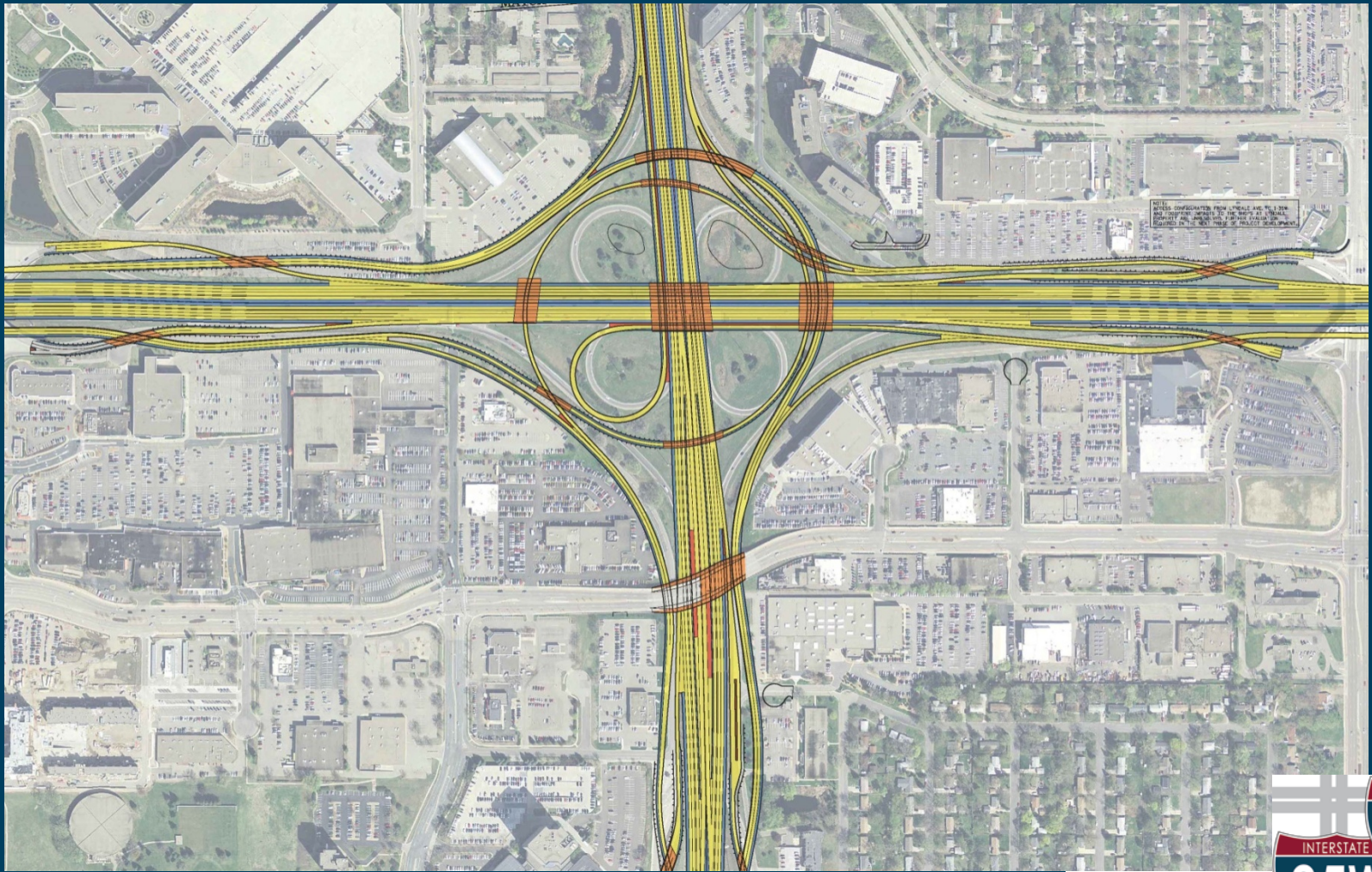


Study Process and Schedule

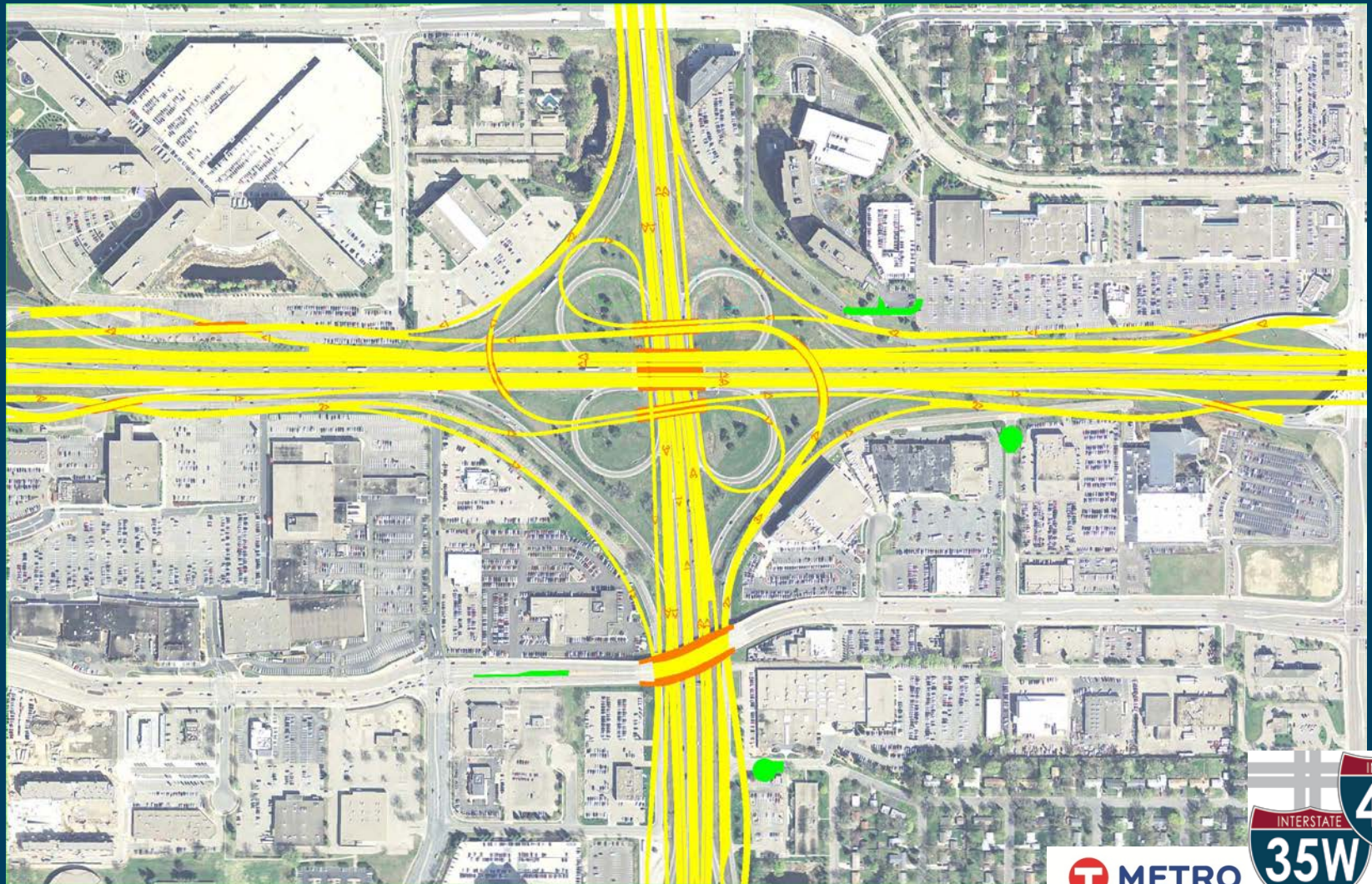
- ▶ Spring/Summer 2013 – Traffic analysis and modeling
- ▶ Fall 2013 – Select transit station and/or park/ride location
- ▶ Fall/Winter 2013/2014 – Bridge type study
- ▶ Spring 2014 – Vision Layout for interchange
- ▶ Fall 2013 and Spring 2014 – public meetings



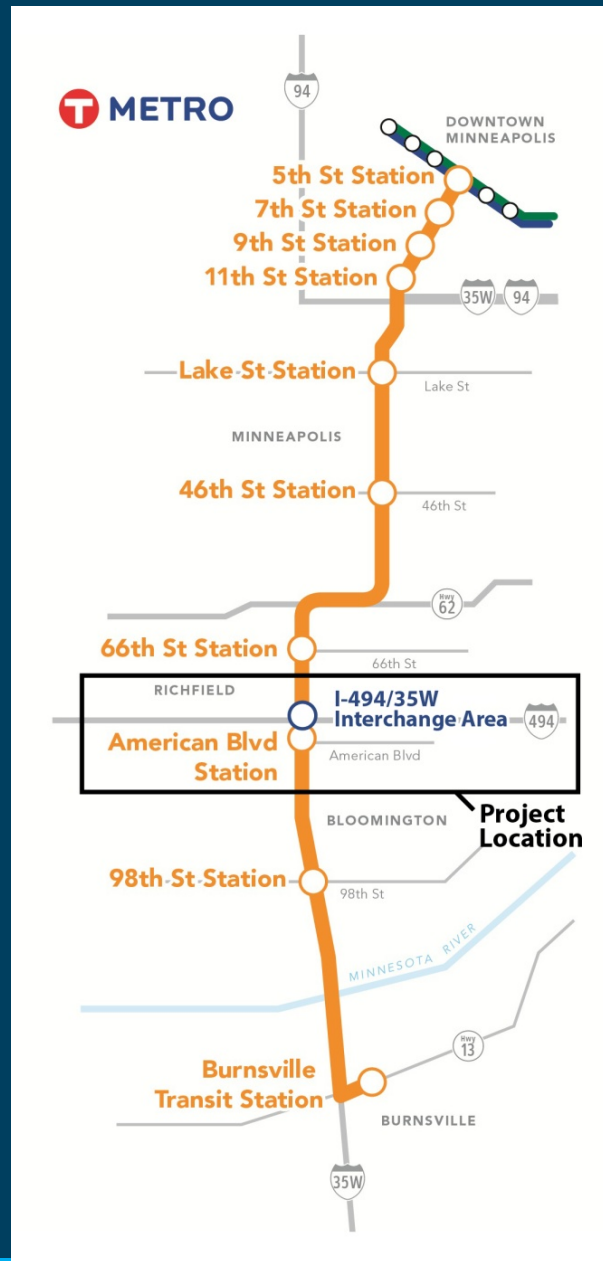
Interchange Concept: Turbine



Interchange Concept: Clovermill



I-35W BRT: Orange Line



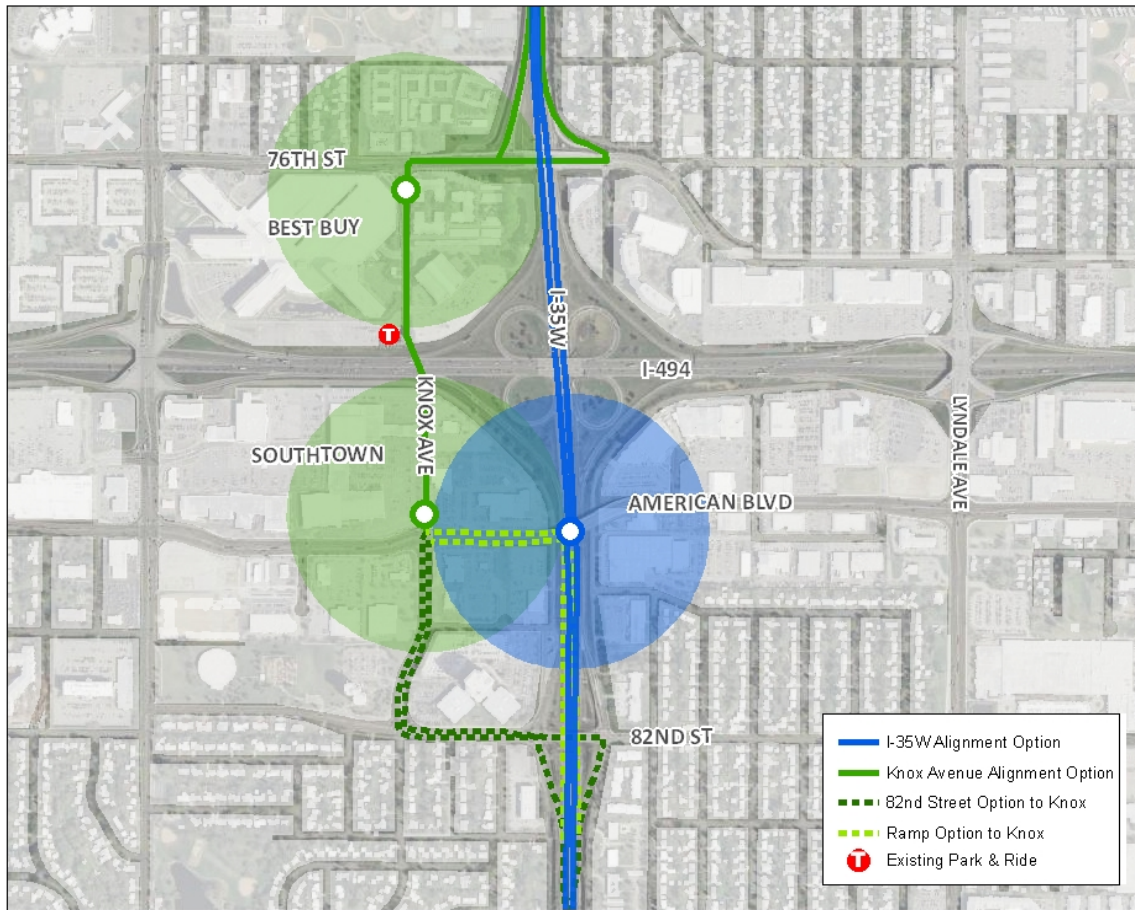
Transit Alignment Alternatives



T METRO



Transit Station Service Areas



T METRO



Conclusions/Next Steps

- ▶ Property Owners Meetings – Ongoing
- ▶ Open House – October 3
- ▶ Study Report – early 2014
- ▶ Funding
- ▶ Programming



Questions?

