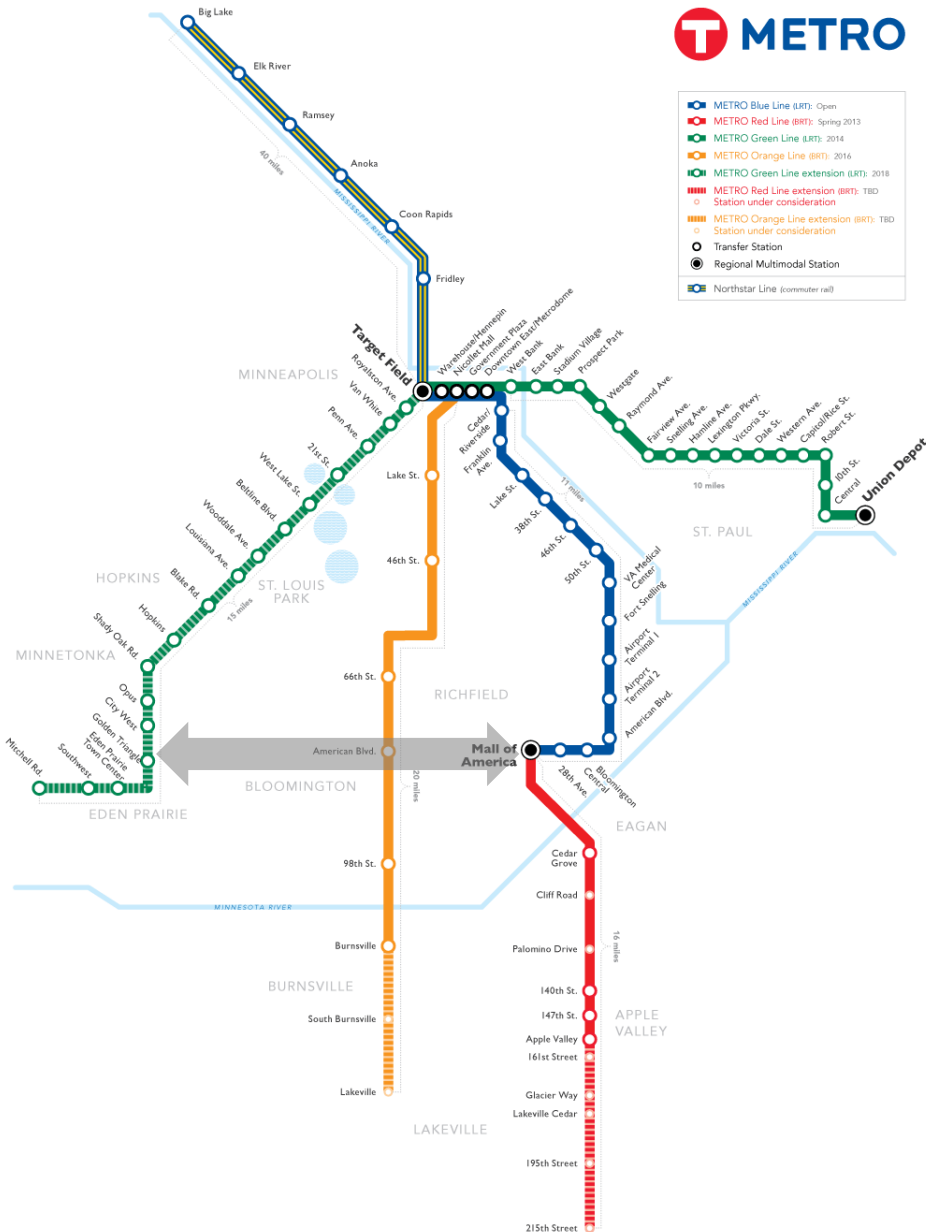


Metro Transit Update

Bloomington Chamber of Commerce
September 18, 2013

Christina Morrison, Metro Transit
BRT/Small Starts Project Office



What is BRT?



Real-time Information



Better Accessibility



Improved Stations and Vehicles



Improved Experience

Less Boarding Delay



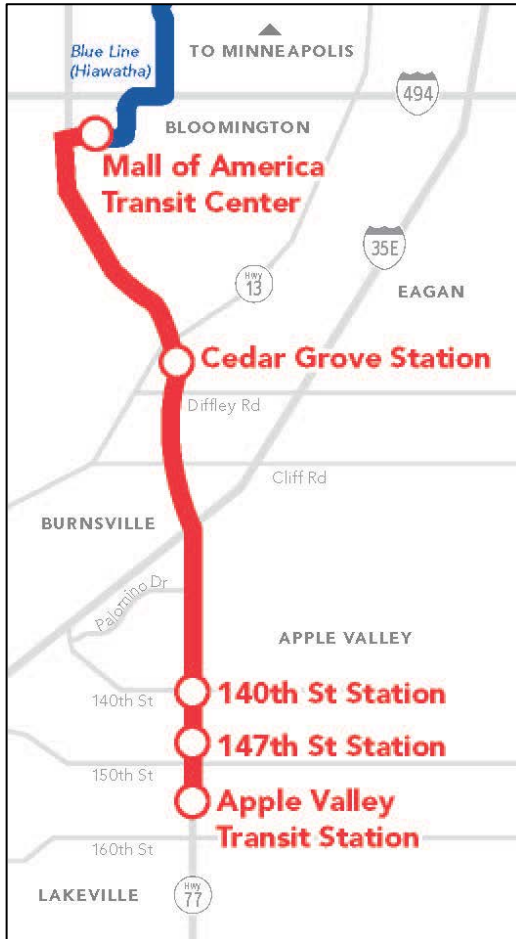
Congestion-free Ride



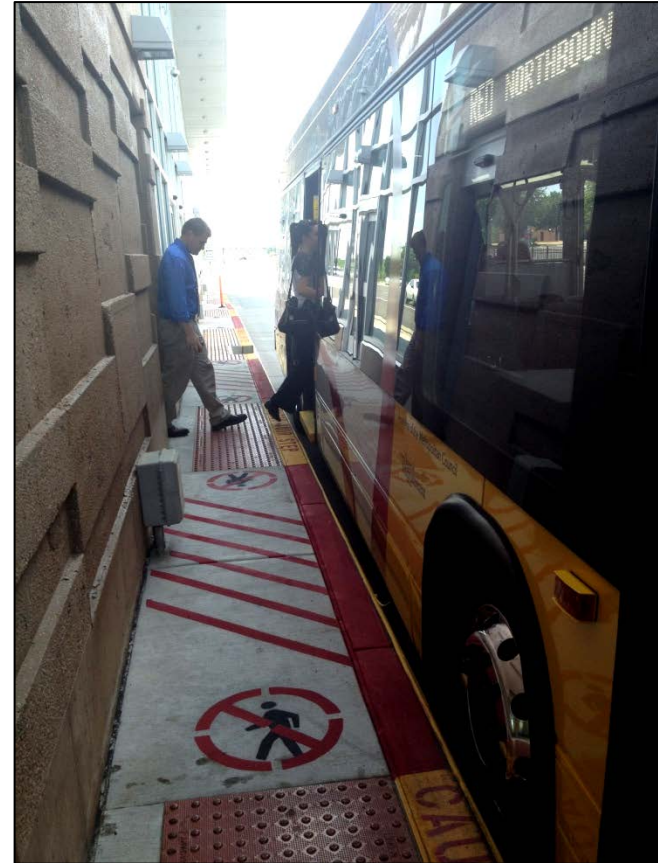
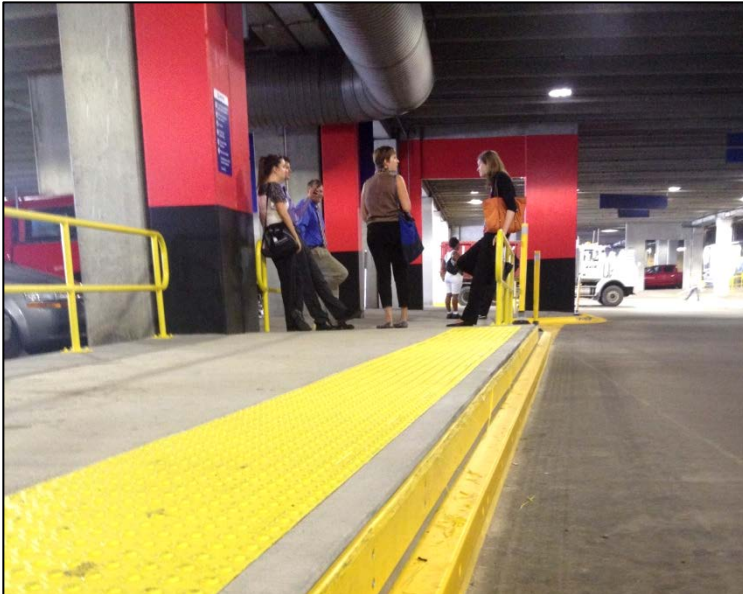
All-day, Frequent Trips



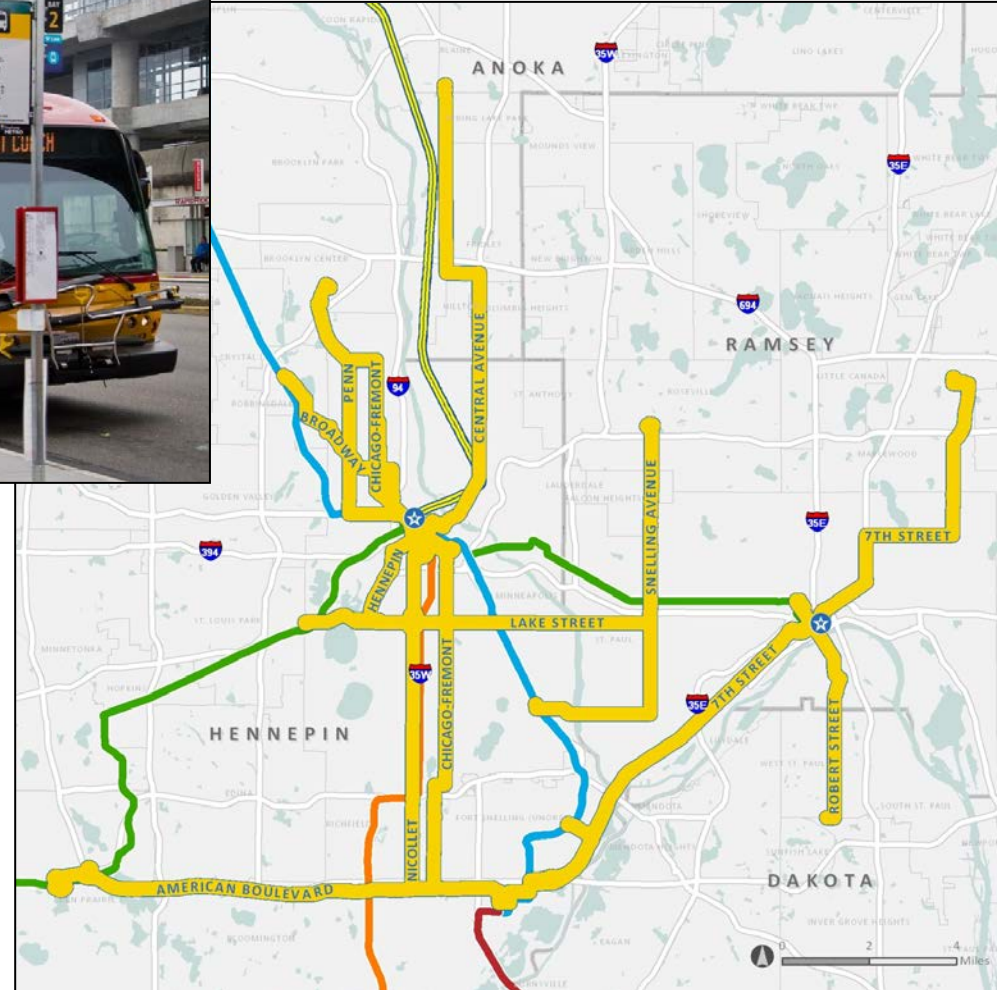
Reliable Service



- Opened June 2013
- Service between Apple Valley and Mall of America
- Newly constructed bus shoulder lanes on Cedar
- 15-minute service weekdays
- 30-minute service on weekends
- Estimated weekday ridership
 - First full year of operation: 975
 - 2017: 1,600



American Boulevard BRT



- Faster, better arterial bus transitways in mixed traffic urban roadways
- \$450 million, 12 corridor network
- Est. >160,000 rides/day (2030)

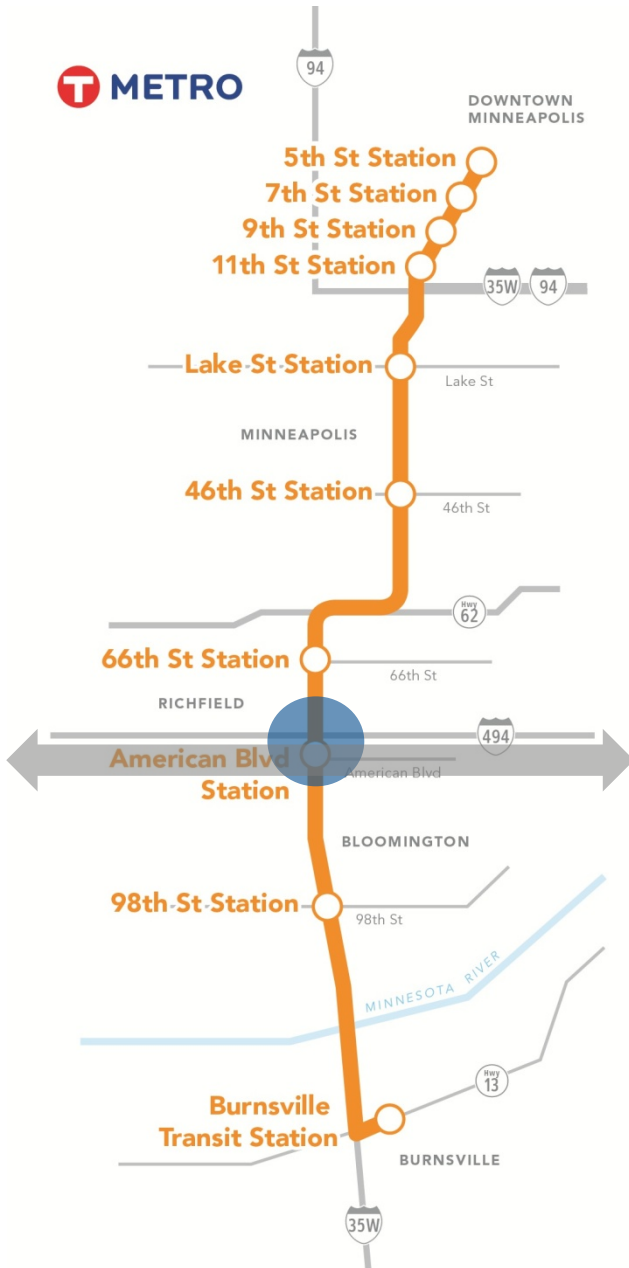
American Boulevard BRT



- 14-mile corridor from MOA to Southwest LRT
- Transitway stations and BRT vehicles, frequent all-day service
- 7 transitways connected: Blue, Green, Orange, Red, 3 Arterial BRT
- Corridor Growth: +25,000 people, +40,000 jobs planned by 2030



METRO Orange Line BRT

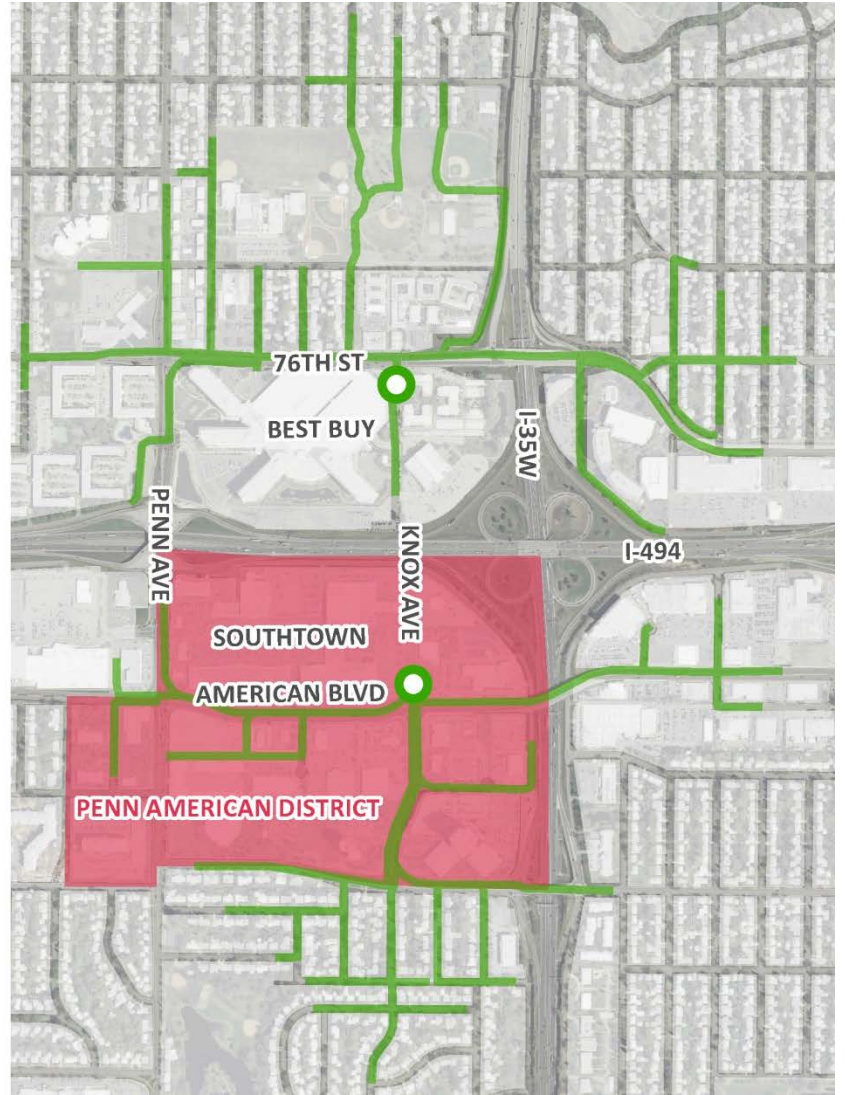
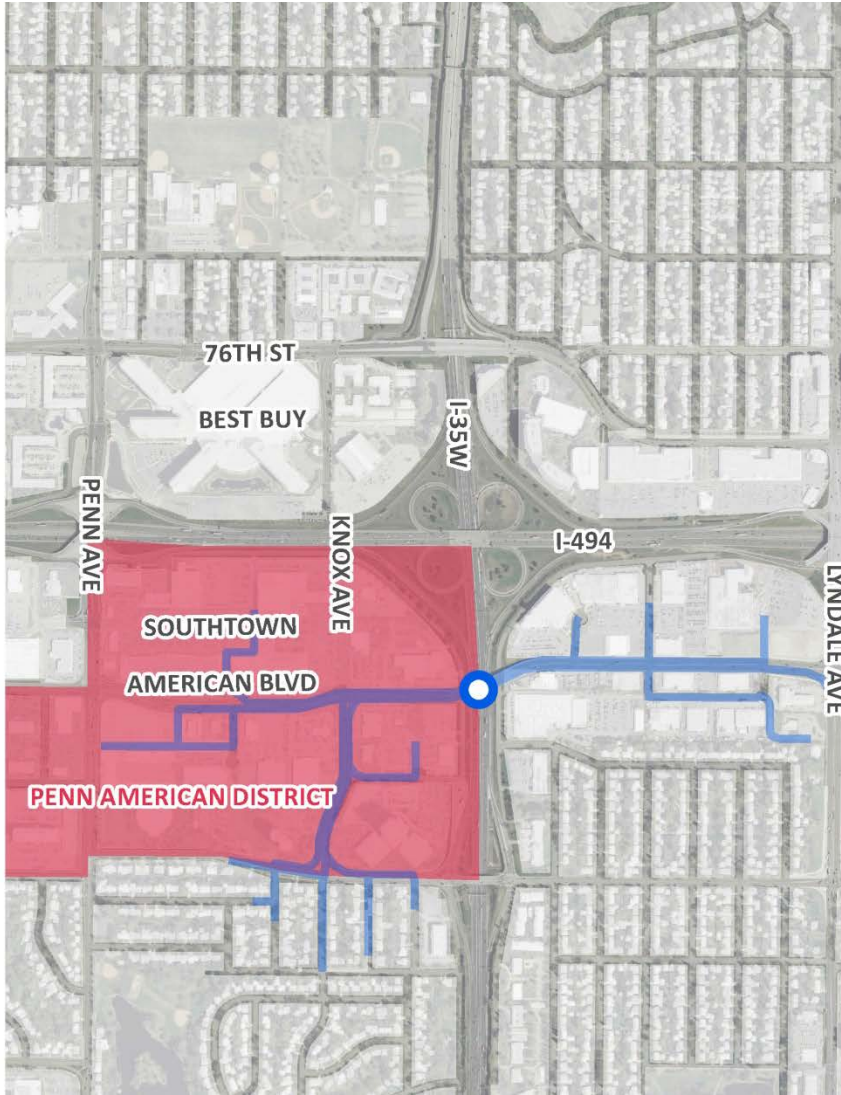


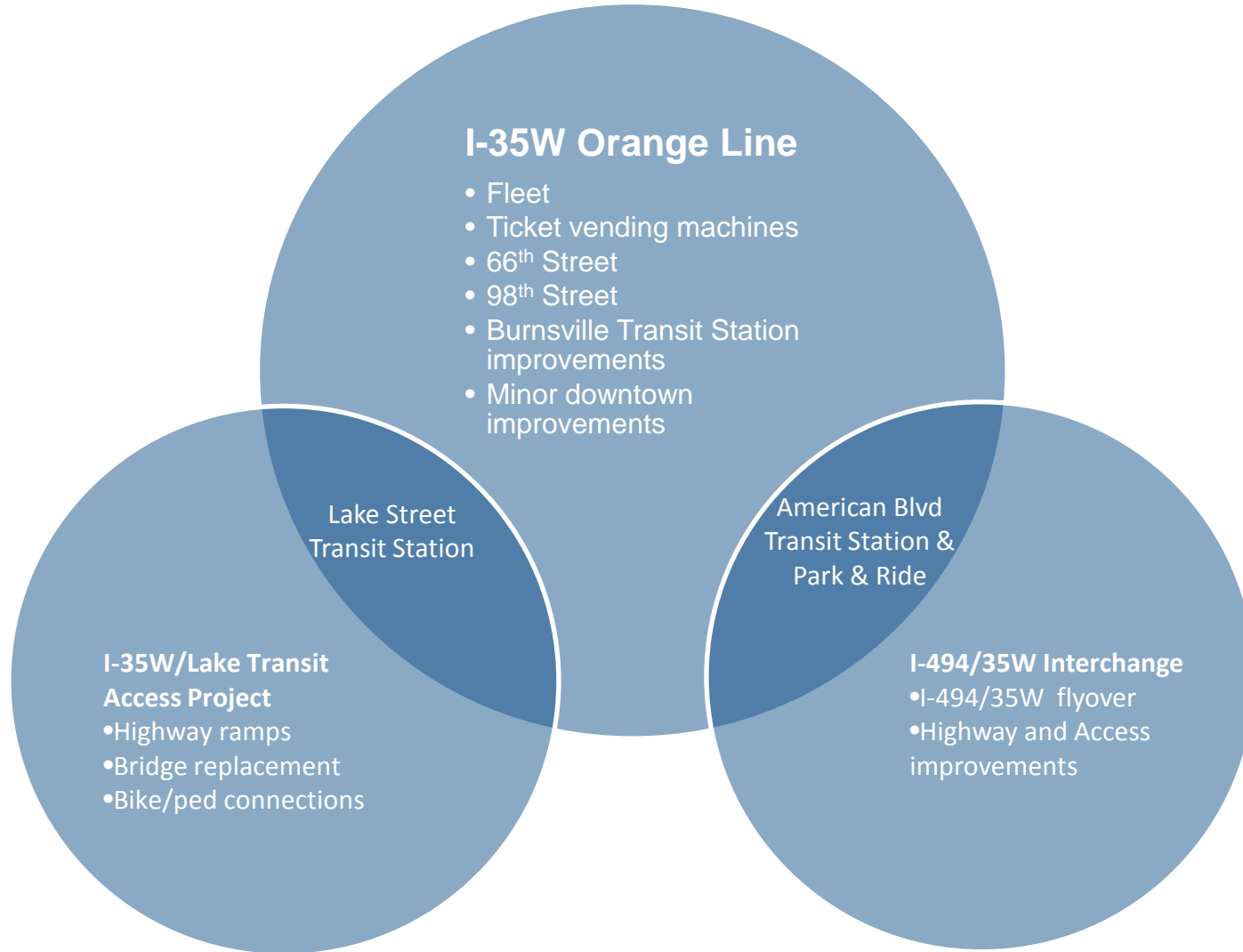
- 16-mile transitway
- Service to Minneapolis, Richfield, Bloomington, and Burnsville
- Uses existing MnPass Lanes
- All-day, bidirectional, frequent service (including weekends)
- Real-time information on platforms
- New park-and-ride at American Boulevard
- Integrated into designs for highway improvements
- Forecasted to open in 2019

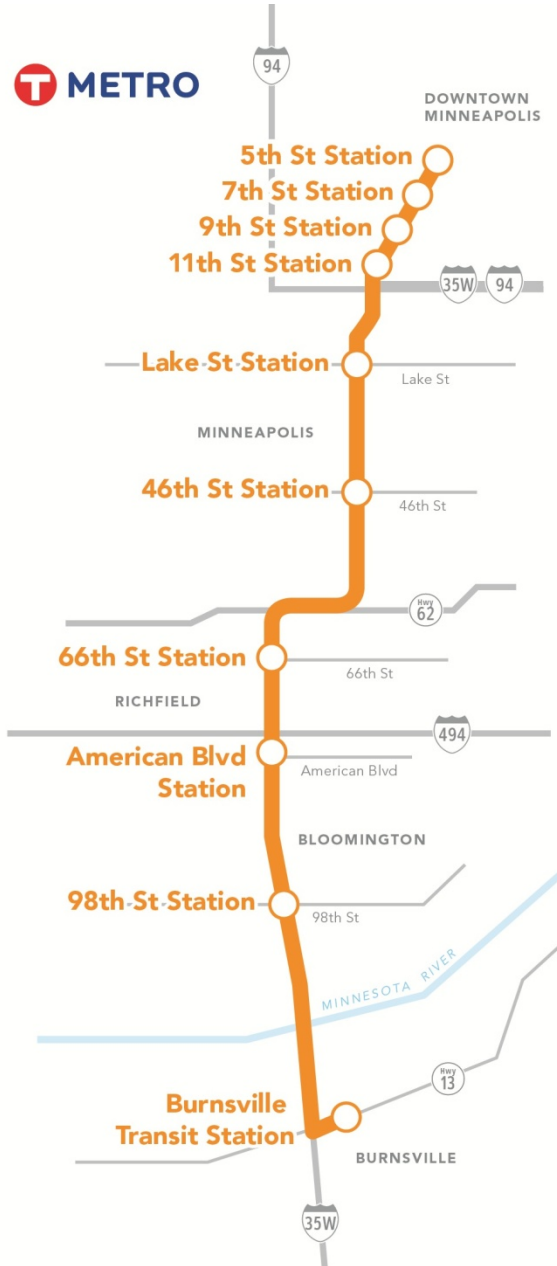
American Blvd Station Planning



American Blvd Station Planning







Questions?

**Christina Morrison, Metro Transit
BRT/Small Starts Project Office
612-349-7690
christina.morrison@metrotransit.org**

www.metrotransit.org