

About the Project

Through a series of modest, corridor-specific improvements we hope to increase customer satisfaction

Route 2 at a glance

- One of the busiest (8th busiest Metro Transit route) with 6,000 weekday boardings
- More end-to-end trips than any other local route with 183 weekday trips
- Carries 1 in 7 corridor users

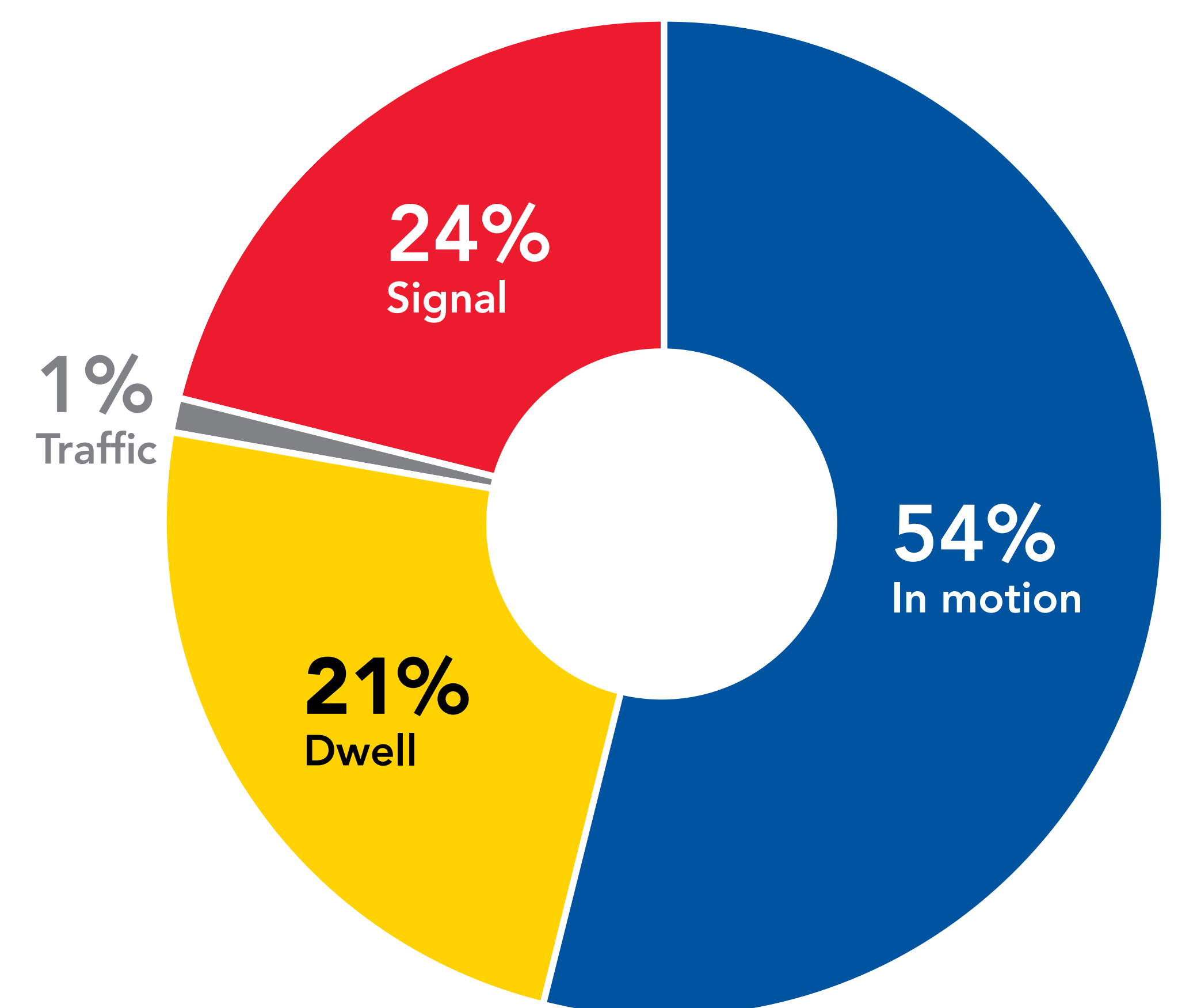
Key destinations include:

- Augsburg
- University of Minnesota
- Multiple Business Districts
- Blue Line and Green Line connections

Anticipated Schedule

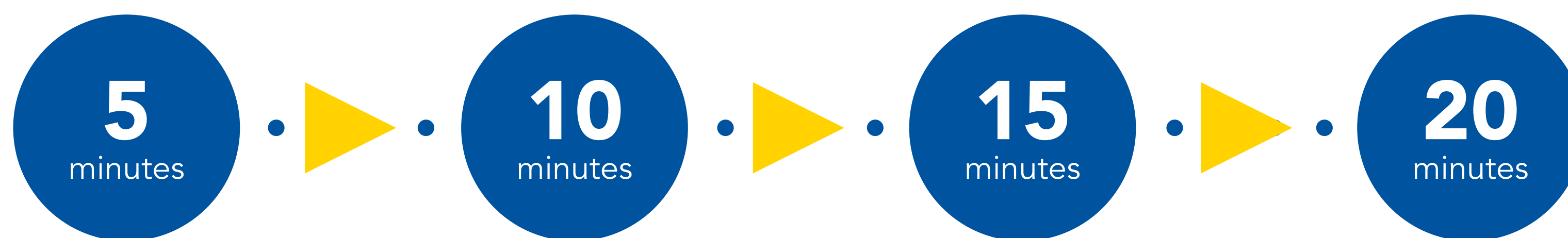
- Fall 2018: Stop Consolidation
- 2018-2019: Facilities Improvements
- 2019 or later: Transit Signal Priority

Route 2 Travel Time Allocation



Walking Times

How long would you walk to get to:



	5 minutes	10 minutes	15 minutes	20 minutes
Coffee Shop/Restaurant				
Grocery Store				
School/Work				
Bus Stop				
Bus Stop with amenities (shelter, light, heat)				
Friend's House				
LRT Station				
Library				
Medical Appointment				
Park				

Help us decide and prioritize

When we plan transit routes we try to strike a balance between faster and more reliable service with stop spacing and accessibility.

Place a dot by the top three items that are most important for your experience using the bus:

Overall travel time	
Bus arriving at planned time	
Bus arrives at steady frequency	
Smooth ride – less starting and stopping	
Less delay in traffic or stop lights	
Walk distance to bus stop	
Amenities at stop	

Stop Consolidation

As we consider reducing stops, we look at regional destinations, major transit connections and neighborhood venues to help evaluate which stops to close.

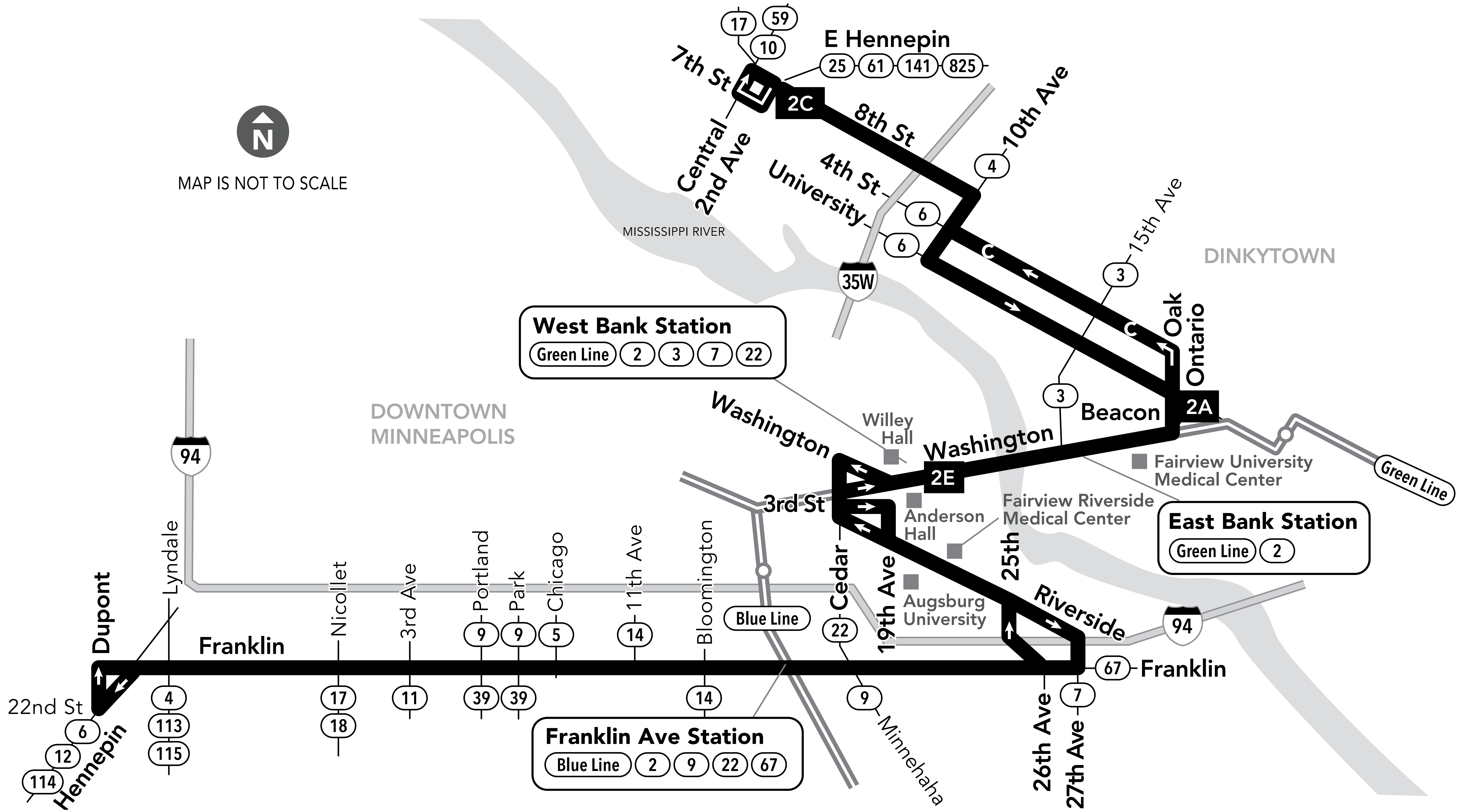
What do you think are the most important factors in making that choice? Place a dot by the top 2:

Transit connections	
Walk condition	
Business access	
Educational institutions	
Regional amenities	
Park access	
Senior facilities or daycare sites	
Stops that feel close together	

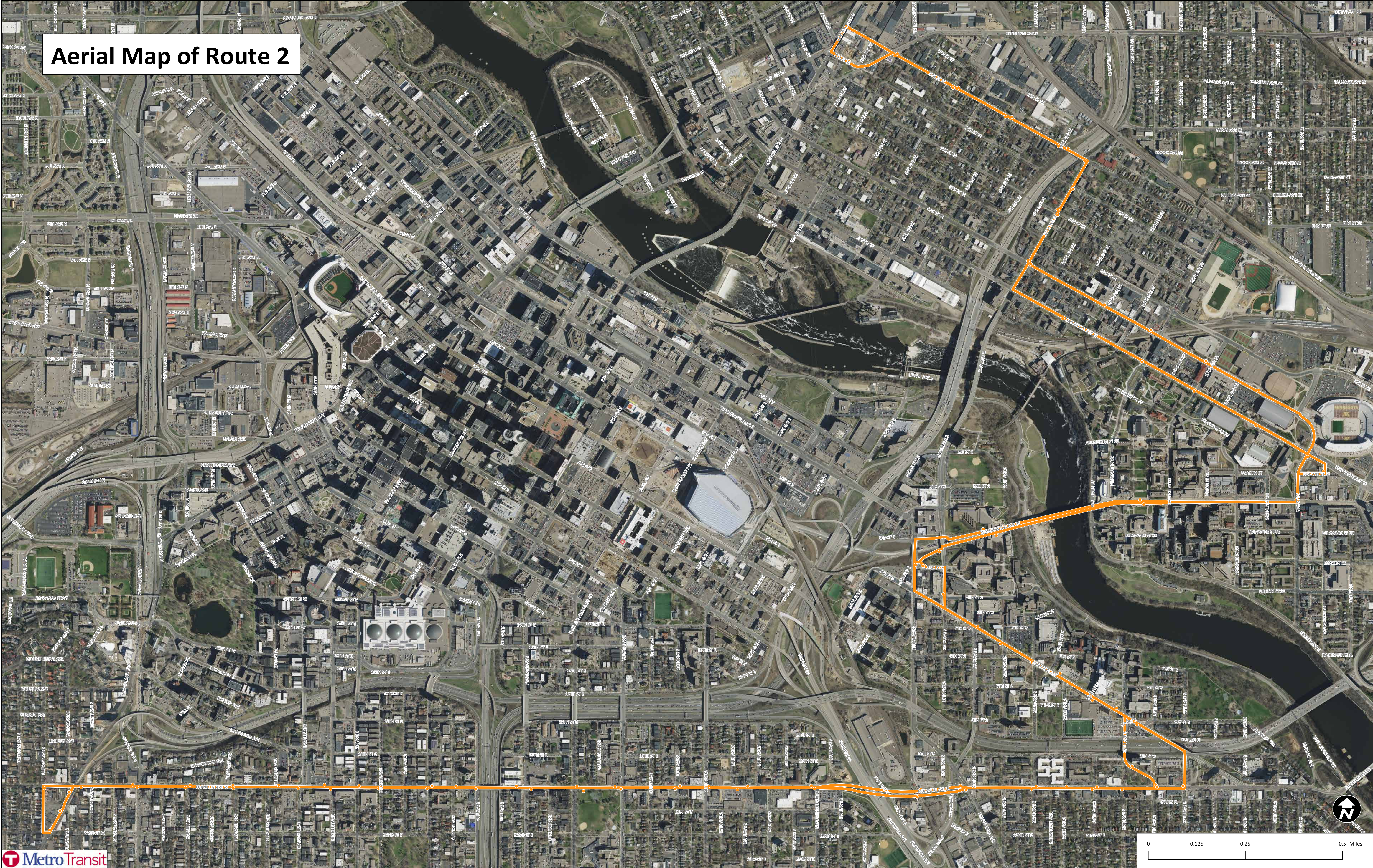
Anything other specific items we should consider?

Which stops are most important to you and why?

Route 2



Aerial Map of Route 2

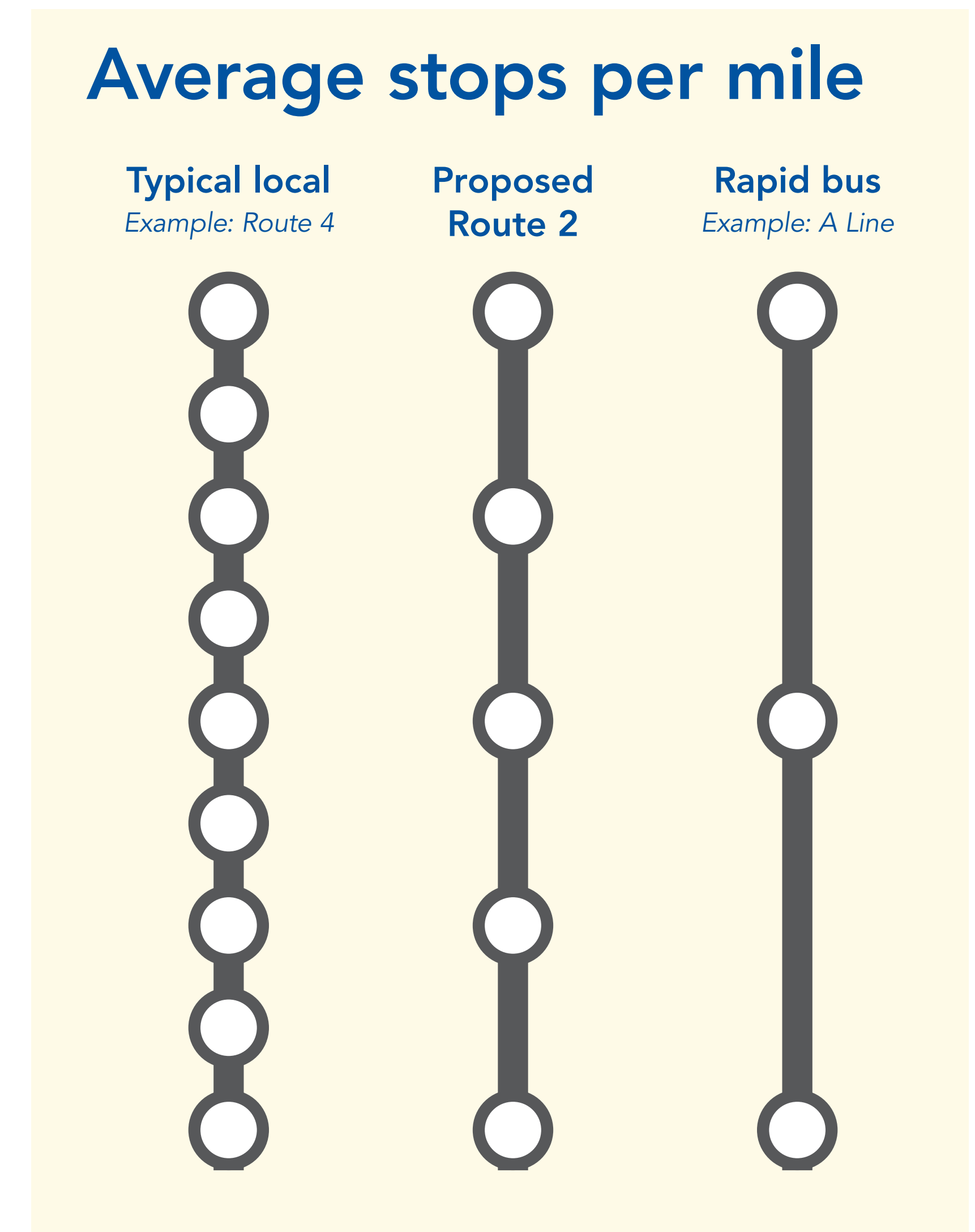


What could change: Stop Placement

To help buses spend more time moving and less time stopping, we are considering combining bus stops that are close together. To balance access and travel time, stops may be up to ¼ mile apart.

Wider stop placement can:

- Reduce overall travel time
- Help buses run more on-time
- Provide a smoother ride with less starting and stopping
- Make the trip more consistent and reduce delays



What could change: Shelters and Facility Improvements

Our goal:

Of the eligible shelter locations, 71% currently have shelters. Our goal is to reach 100% where conditions allow.

Other improvements include:

- Curb extensions to provide more space for passenger facilities
- ADA improvements for fully accessible boarding
- Maintaining a clear zone at the bus stop to allow easier boarding and lighting.



What could change: Transit Signal Priority

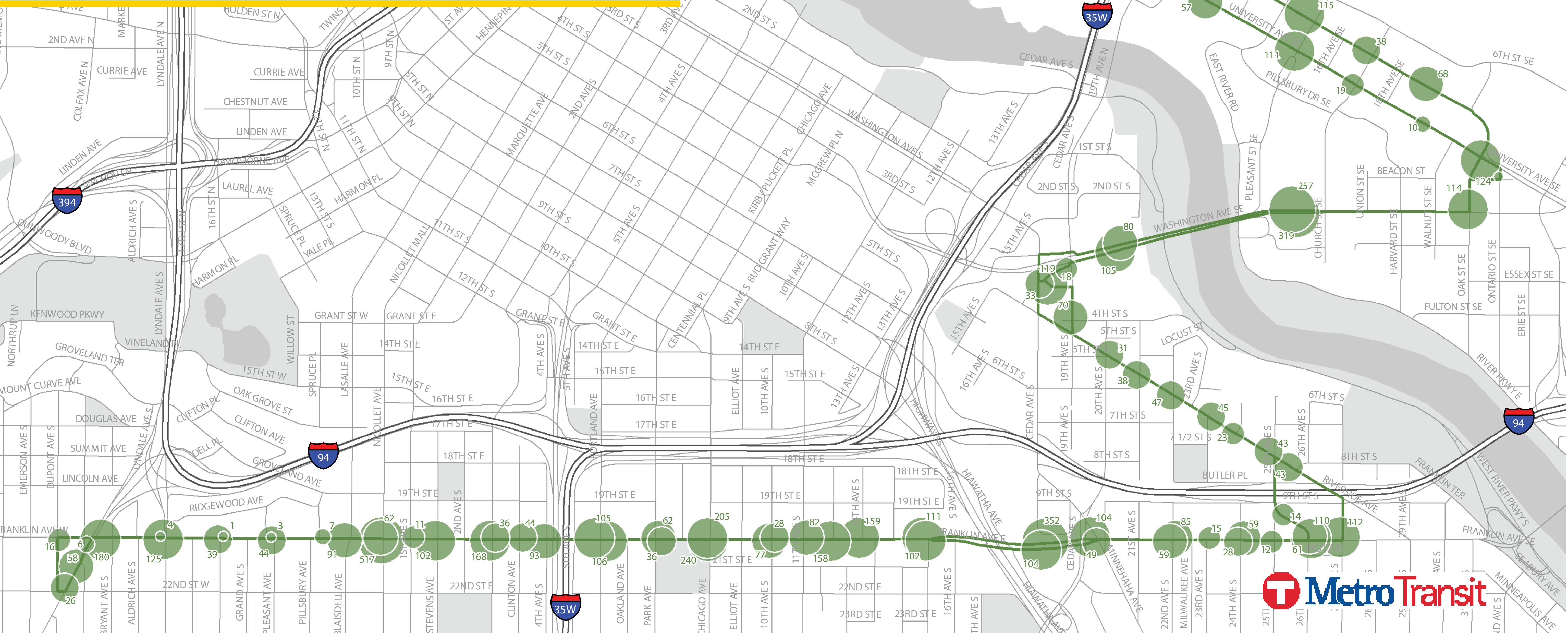
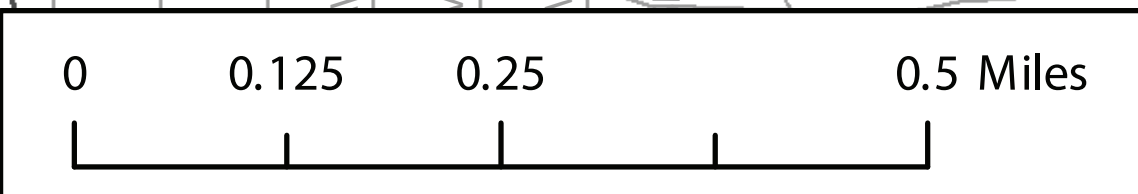
Route 2 travels through more than 50 signalized intersections. With Transit Signal Priority (TSP) technology, buses can communicate with traffic signals to help stay on schedule. Buses that are behind schedule can request that a light stay green as they approach an intersection.

We are reviewing the intersections on Route 2 where buses are delayed the most to determine where TSP could provide the biggest benefit.





Route 2: Weekday Boardings by Stop



Route 2: Weekend Boardings by Stop

