

# I-35W & 98<sup>th</sup> Street Visioning Workshop





# METRO Orange Line Bus Rapid Transit (BRT)

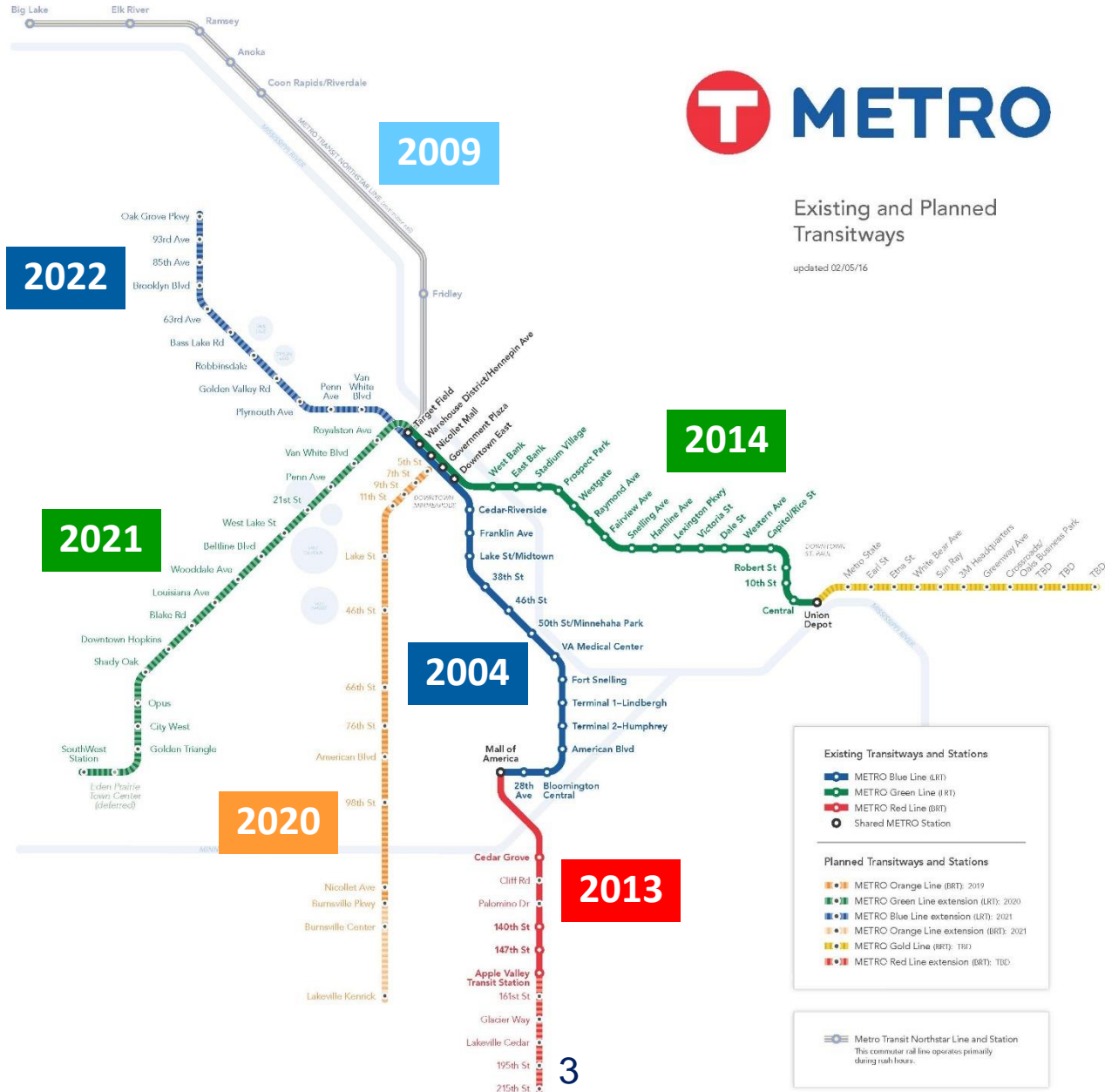
- **Most heavily-traveled express bus corridor**
  - 14,000 existing bus riders each weekday on 26 routes
  - Over 26,000 rides by 2040 w/ BRT
  - 210,000 cars a day
  - Past express bus investments
- **Who are Orange Line riders?**
  - Access to 30,000 suburban jobs
  - Better serves all-day, evening, weekend markets
  - Better serves non-downtown trips, especially to the 494 corridor



# METRO

## Existing and Planned Transitways

updated 02/05/16



- Existing Transitways and Stations**
- METRO Blue Line (IRT)
  - METRO Green Line (IRT)
  - METRO Red Line (IRT)
  - Shared METRO Station
- Planned Transitways and Stations**
- METRO Orange Line (IRT) 2019
  - METRO Green Line extension (IRT) 2020
  - METRO Blue Line extension (IRT) 2021
  - METRO Orange Line extension (IRT) 2021
  - METRO Gold Line (IRT) T10
  - METRO Red Line extension (IRT) T10

METRO Transit Northstar Line and Station  
This commuter rail line operates primarily during rush hours.

# Faster, More Frequent BRT Service



- Upgrade and replace Route 535
  - 2,000+ existing daily riders
- 10-minute peak
- 15-minute midday and weekends
- 20 hours/day
- 7 days/week
- Improved connecting service, better suburb-to-suburb connections



# BRT Station Components



Heaters



Ticket vending machines



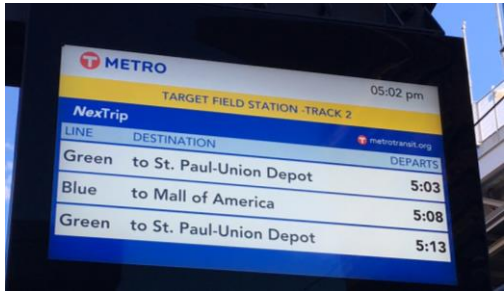
Pylon



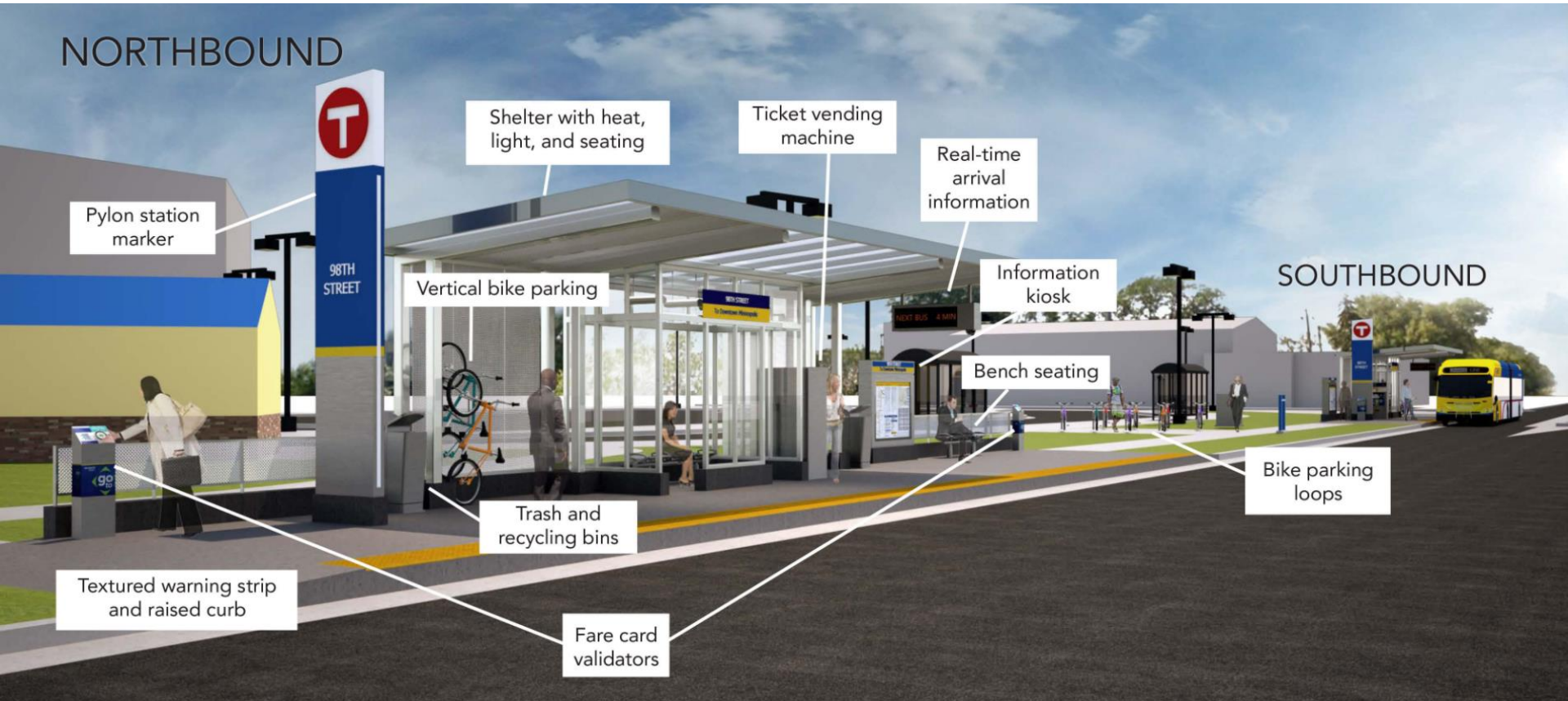
LED Lighting



Materials



Real-time signage



NORTHBOUND

SOUTHBOUND

Pylon station marker

Shelter with heat, light, and seating

Ticket vending machine

Real-time arrival information

Vertical bike parking

Information kiosk

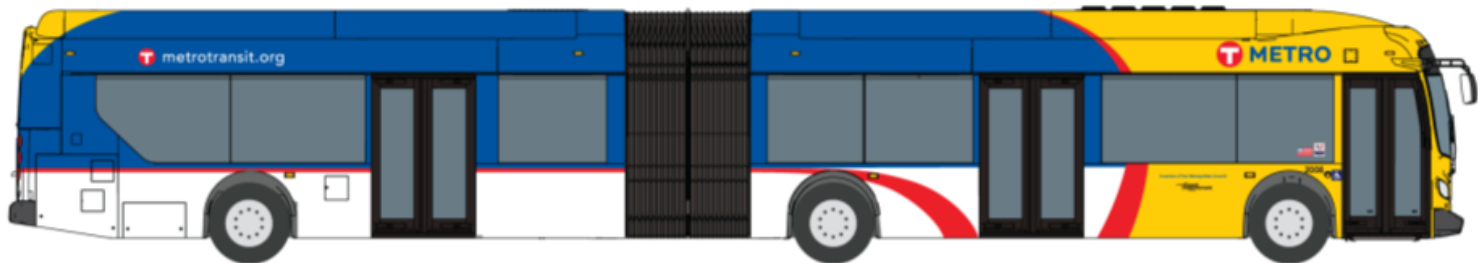
Bench seating

Bike parking loops

Trash and recycling bins

Textured warning strip and raised curb

Fare card validators



# I-35W & 98<sup>th</sup> St Station Area

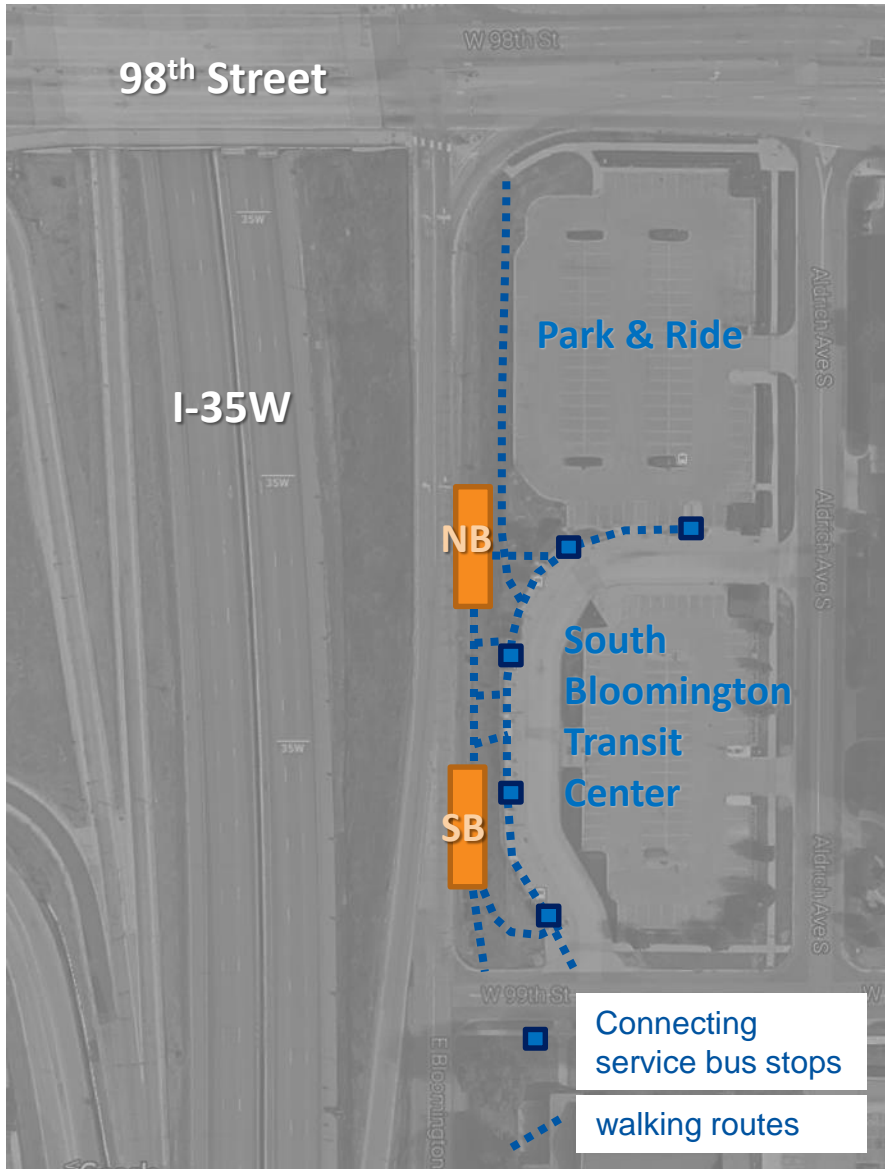




# I-35W & 98<sup>th</sup> St Station Area



# I-35W & 98<sup>th</sup> St Station



## Survey on location of I-35W & 98<sup>th</sup> St Station (2013)

Transit riders prioritized:

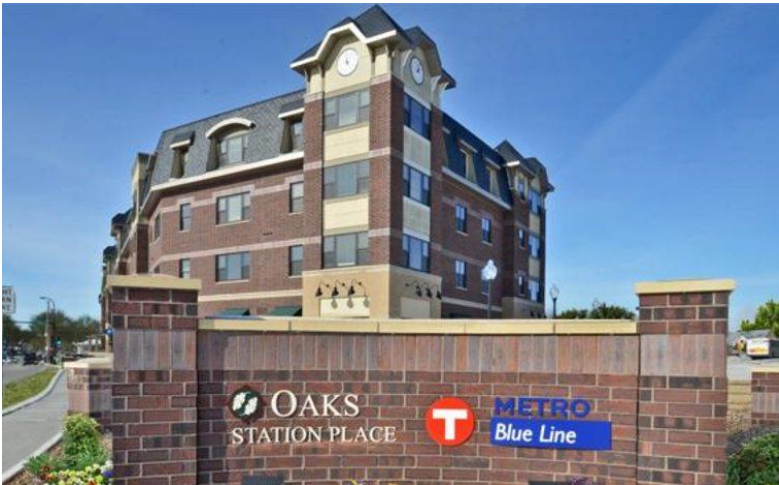
- easy transfer to other routes
- speed of service to Burnsville
- proximity to the park & ride

## Public comment period on station design (2016)

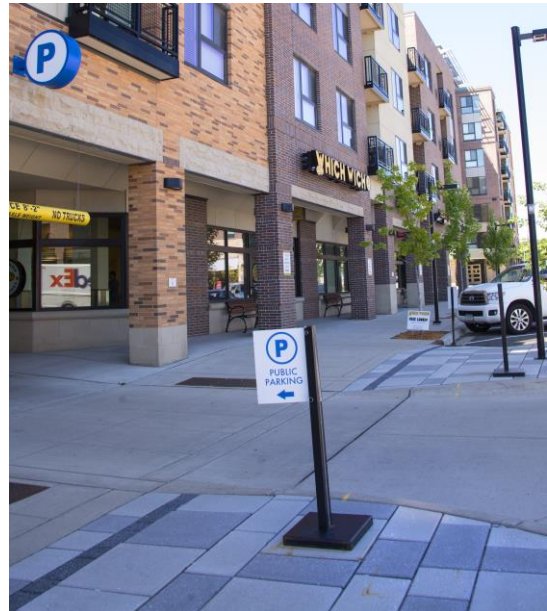
- park & ride is already full
- locations of platform features
- incorporate adequate wayfinding to locate platform

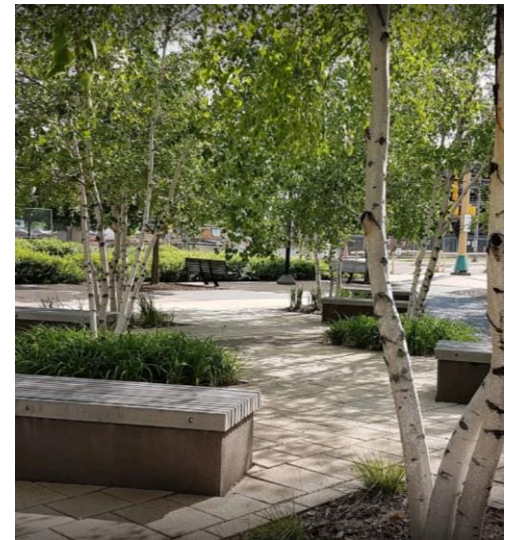


# METRO Stations in the Twin Cities: Land Use



# METRO Stations in the Twin Cities: Transportation





Get more information or sign-up for our newsletter at  
[www.metrotransit.org/orangeline](http://www.metrotransit.org/orangeline)

