

Orange Line TAC

April 11, 2017



Budget & Costs

- Lake Street at 100% design, slight decrease in costs
- 12th Street Ramp at 100% design, costs stable
- 60% cost estimates expected in June

FTA

- President's Budget Blueprint

CTIB

- Update on dissolution

State Legislature

- Orange Line & Lake Street Station included in House & Senate bills

MnDOT Partnership Sequence and Schedule



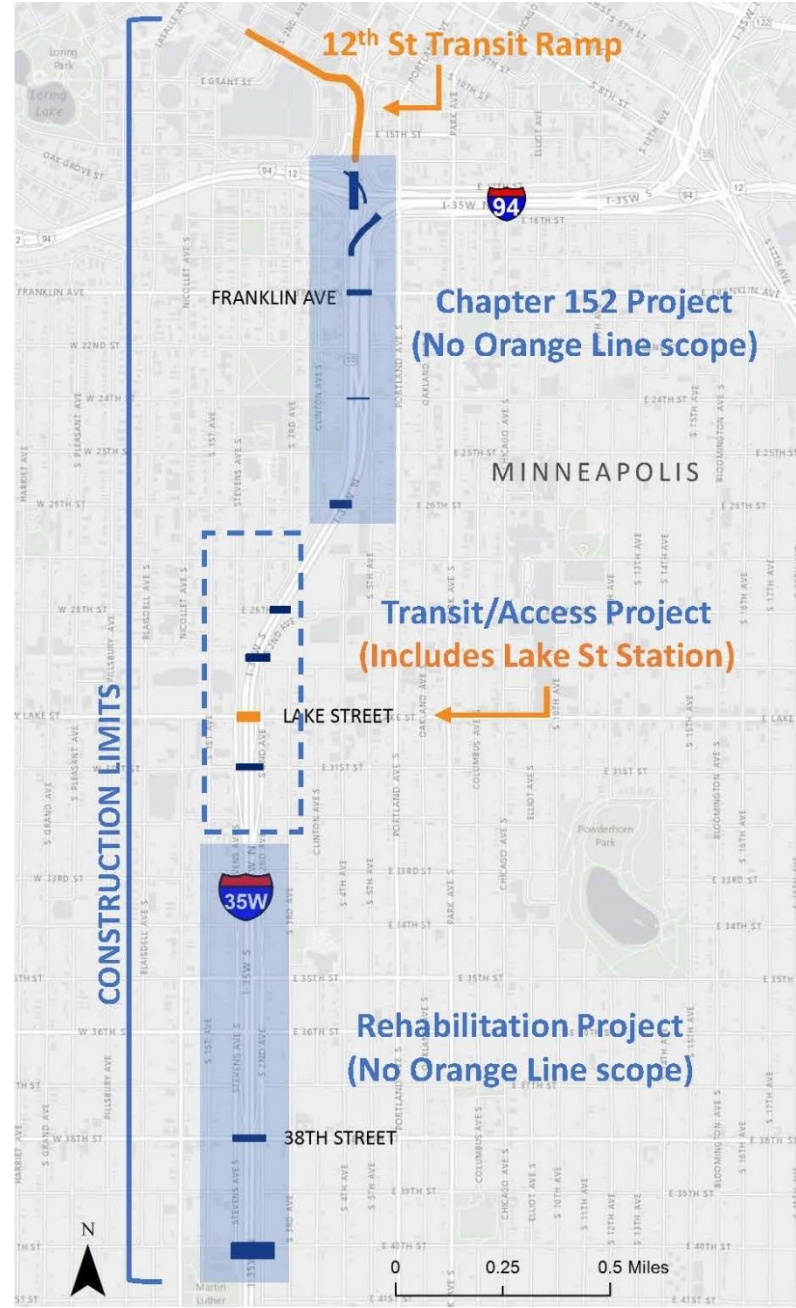
MnDOT Partnership Agreement

100% Design Completion
March 15, 2017

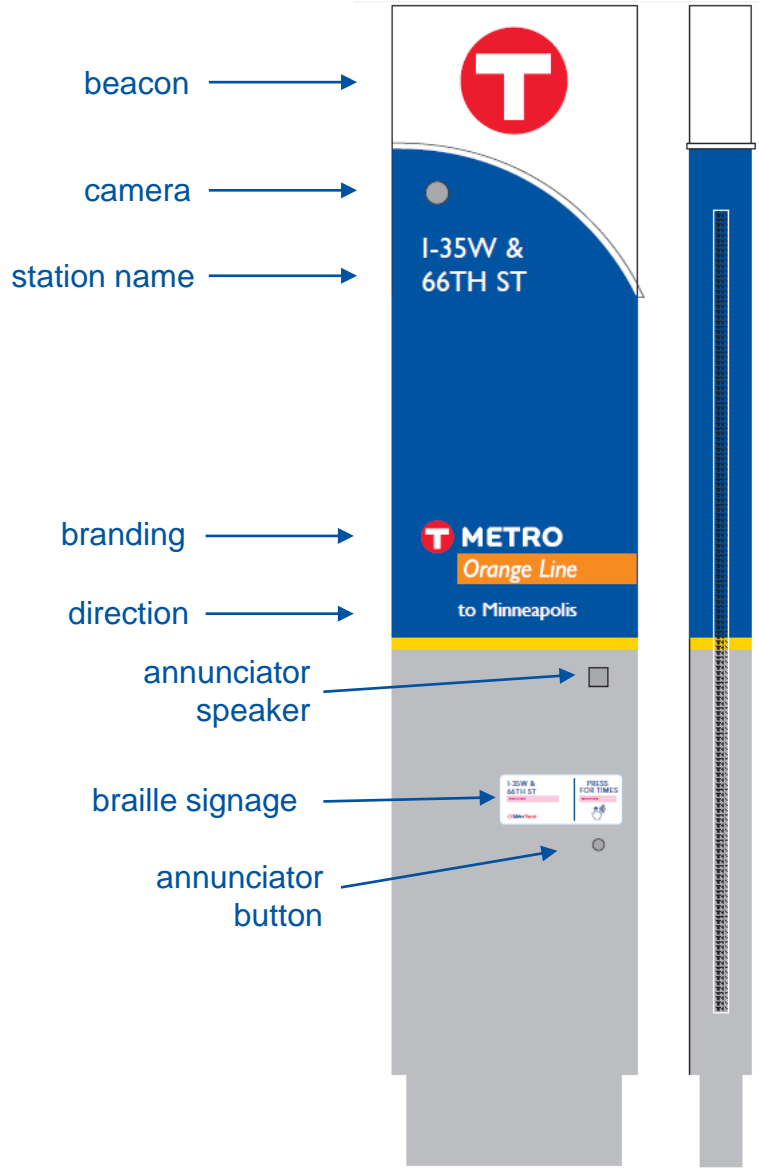
Met Council authorization to negotiate
MnDOT agreement
March 22, 2017

MnDOT contracting & award
Summer 2017

MnDOT leads coordinated construction
2017-2021



Draft Pylon Design (66th St and south)

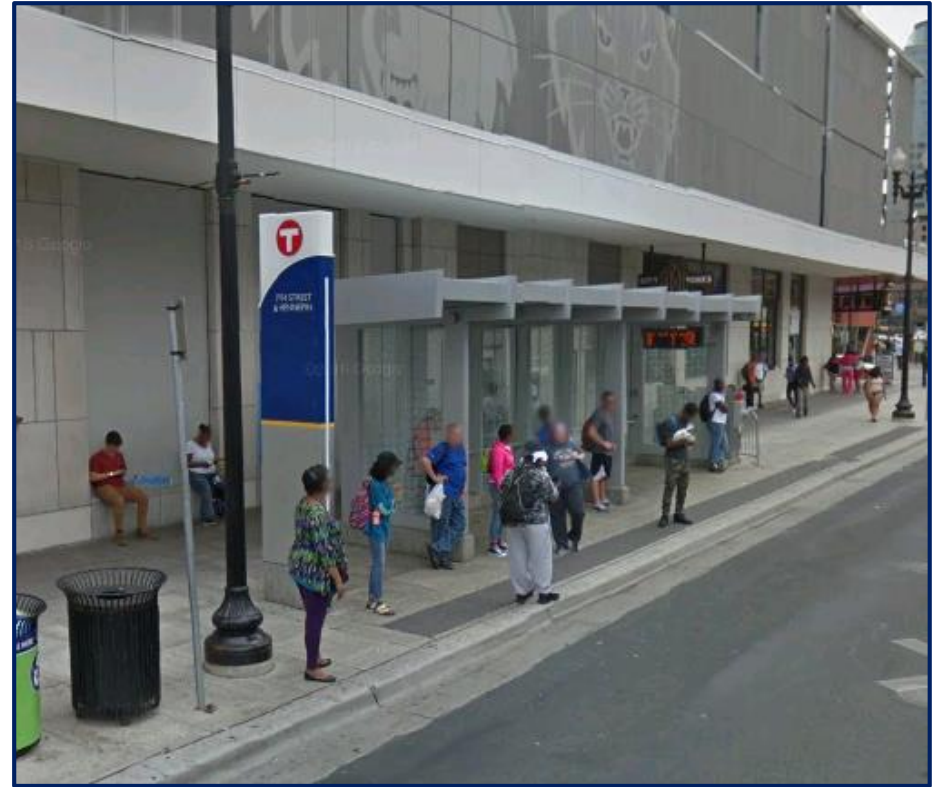
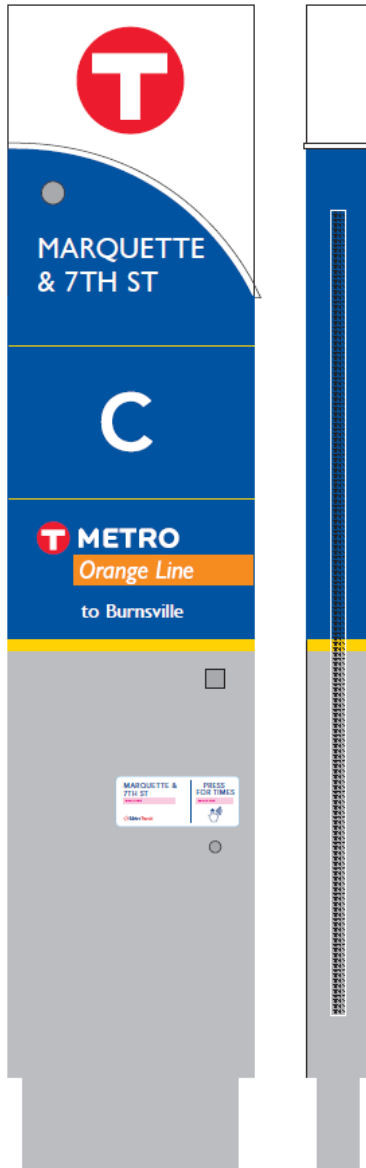


A Line station pylon

Draft Pylon Design (Downtown)



branding →



Arterial BRT pylon at 7th & Hennepin

Dec. 2016 – Feb. 2017

Input from Orange Line Working Group & Technical Advisory Committee

Mar. 2017 – Apr. 2017

City of Burnsville leads Burnsville station naming process

May 2017

Orange Line team develops list of recommended station names

May 2017

Input on list of recommended names from Orange Line WG & TAC

Jun. – Jul. 2017

Station names brought to Metropolitan Council Transportation Committee & General Meeting for review and approval

Burnsville City Council Recommendations

- 1** *Map: Nicollet Avenue*
Burnsville Heart of the City
Heart of the City Travelers Trail
- 2** *Map: Burnsville Parkway*
I-35W & Burnsville Parkway
- 3** *Map: Burnsville South (Orange Line Extension)*
42 Commons
Burnsville Center



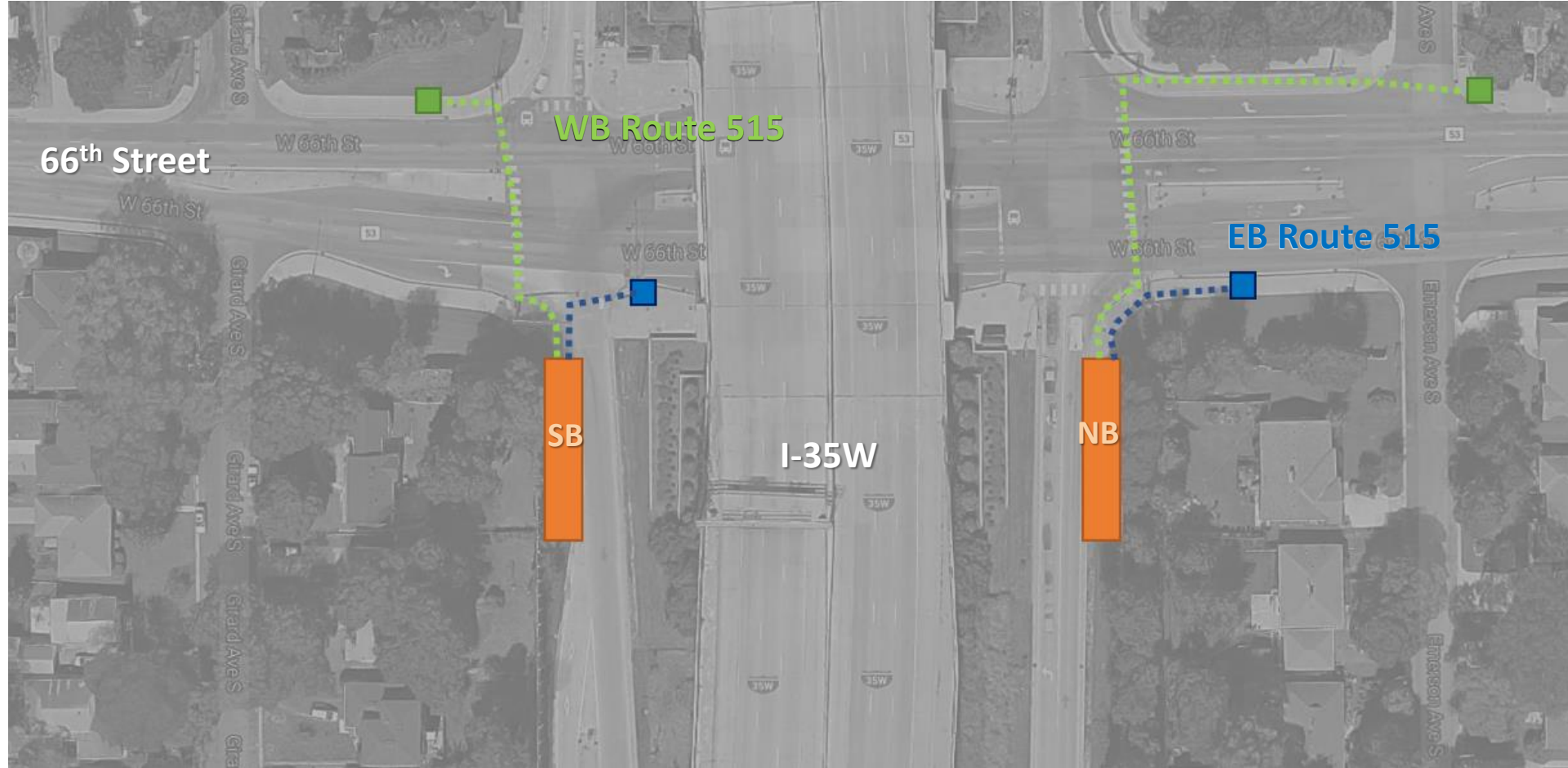
Group 1: 66th Street & 98th Street Stations







Group 2: Nicollet Avenue & Burnsville Parkway Stations



66th Street – platforms & connecting bus stops











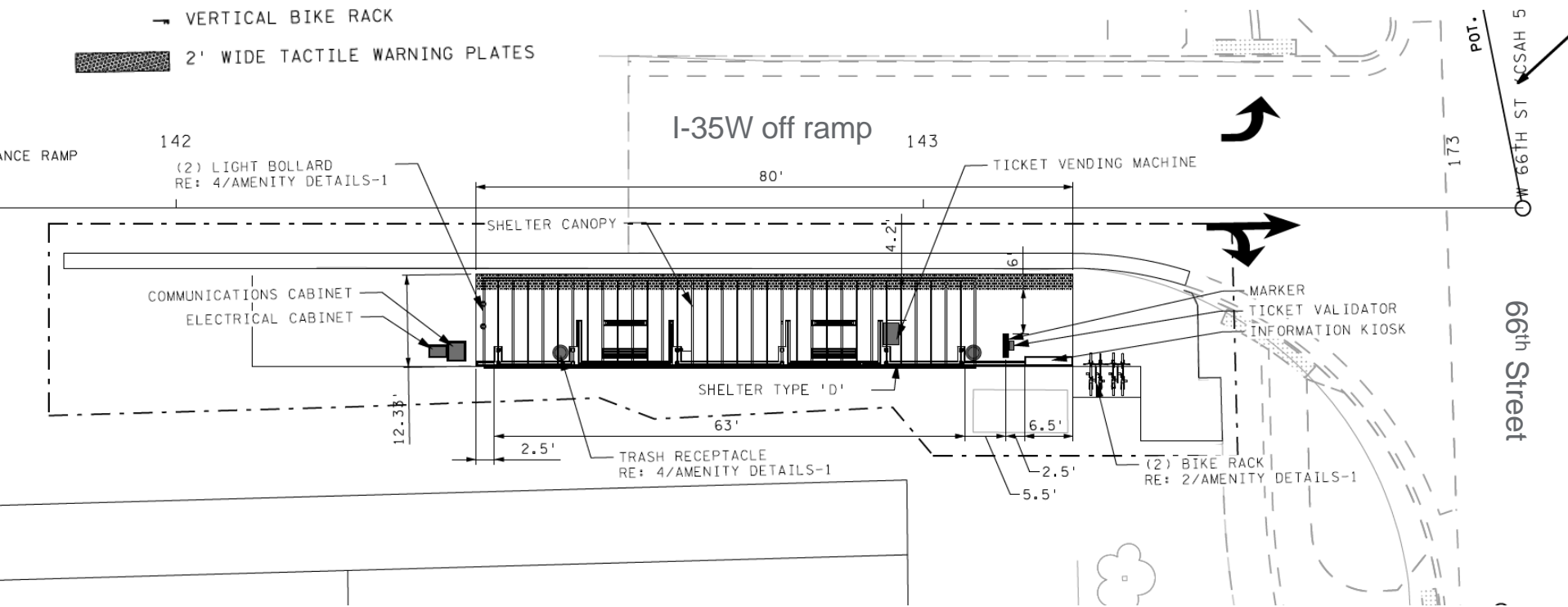
-  Connecting eastbound bus stops
-  Connecting westbound bus stops
-  walking route
-  walking route

66th Street Northbound Platform



LEGEND

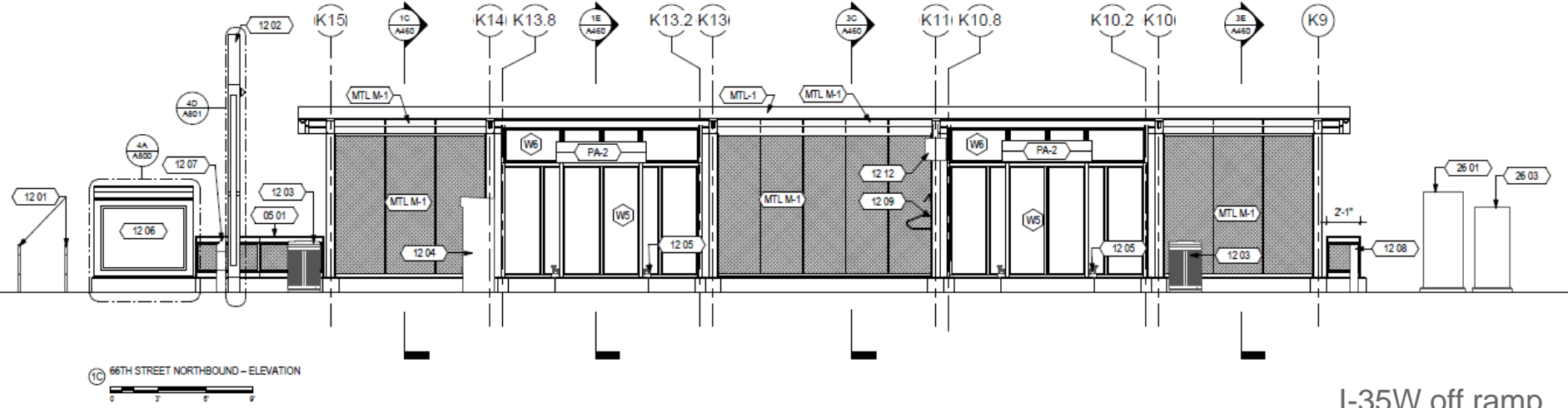
-  MARKER
-  INFORMATION KIOSK
-  TICKET VENDING MACHINE (BY OTHERS)
-  TICKET VALIDATOR (BY OTHERS)
-  TRASH RECEPTACLE
-  BENCH
-  VERTICAL BIKE RACK
-  2' WIDE TACTILE WARNING PLATES



Northbound 66th Street Station Elevation



← North to I-35W



I-35W off ramp

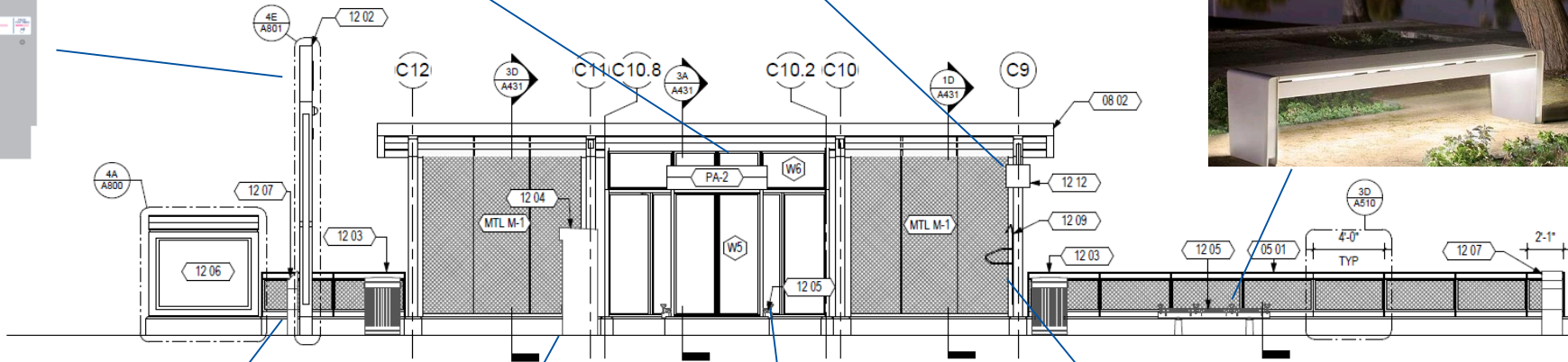
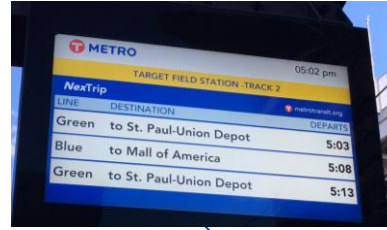
KEYNOTES

- 05 01 GUARDRAIL WITH METAL MESH
- 08 01 POLYCARBONATE CANOPY
- 12 01 MOUNTED LOOPED BIKE RACK, SEE URBAN DESIGN DWGS
- 12 02 MARKER
- 12 03 WASTE RECEPTACLE, SEE URBAN DESIGN DWGS
- 12 04 TICKETING VENDING MACHINE, SEE COMMUNICATIONS DESIGN DWGS
- 12 05 BENCH, SEE URBAN DESIGN DWGS
- 12 06 KIOSK
- 12 07 SMART CARD VALIDATOR, SEE URBAN DESIGN DWGS
- 12 08 BOLLARD, SEE URBAN DESIGN DWGS
- 12 09 VERTICAL BIKE RACK
- 12 12 VARIABLE MESSAGE SIGN, SEE COMMUNICATIONS DRAWINGS
- 26 01 ELECTRICAL CABINET, SEE ELECTRICAL DWGS
- 26 03 COMMUNICATION CABINET, SEE COMMUNICATION DWGS

MATERIAL OR TYPE KEYNOTES

- A-CONC ARCHITECTURAL CONCRETE
- MTL M-1 EXPANDED METAL MESH
- MTL-1 METAL FLASHING, STAINLESS STEEL
- PA-2 SIGNAGE

Station Furnishings & Elevation











1A 98TH STREET STATION SOUTHBOUND-FRONT ELEVATION

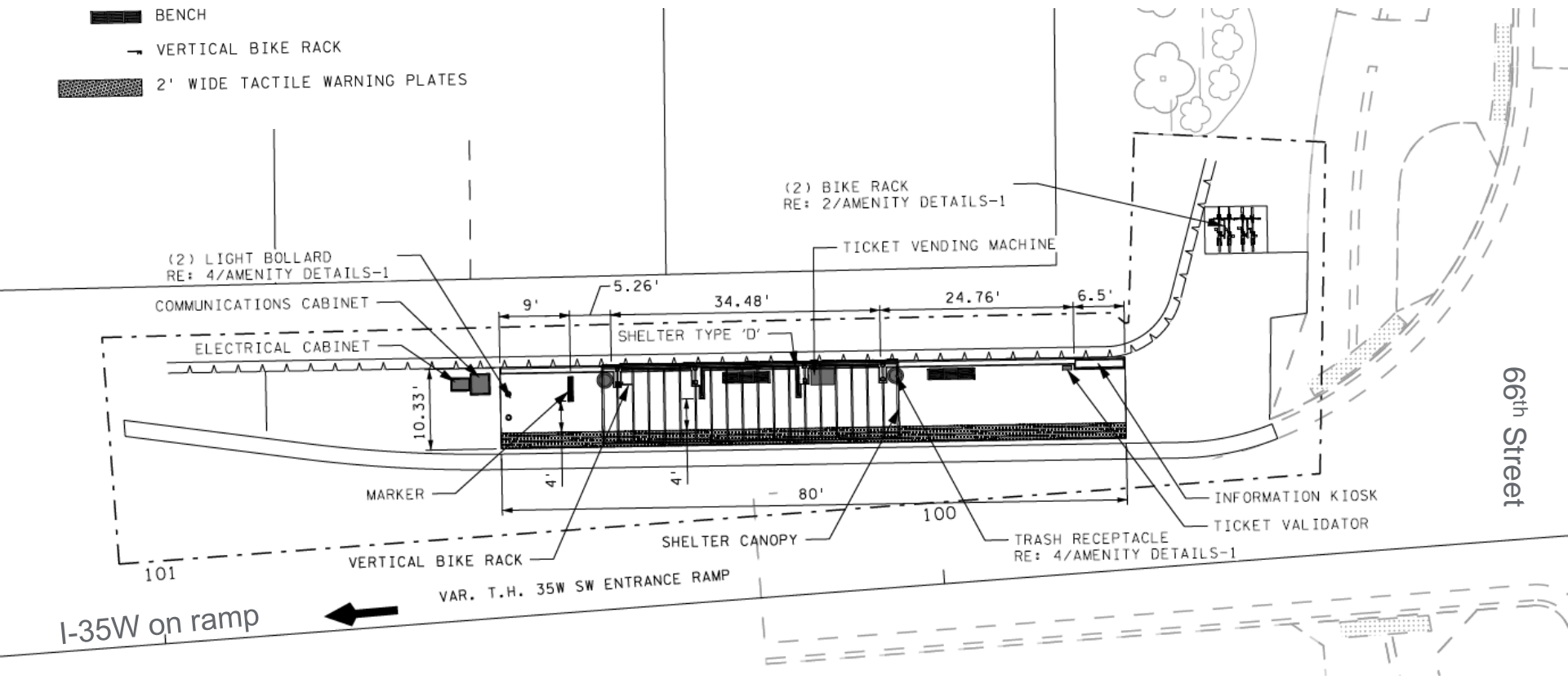


66th Street Southbound Platform



LEGEND

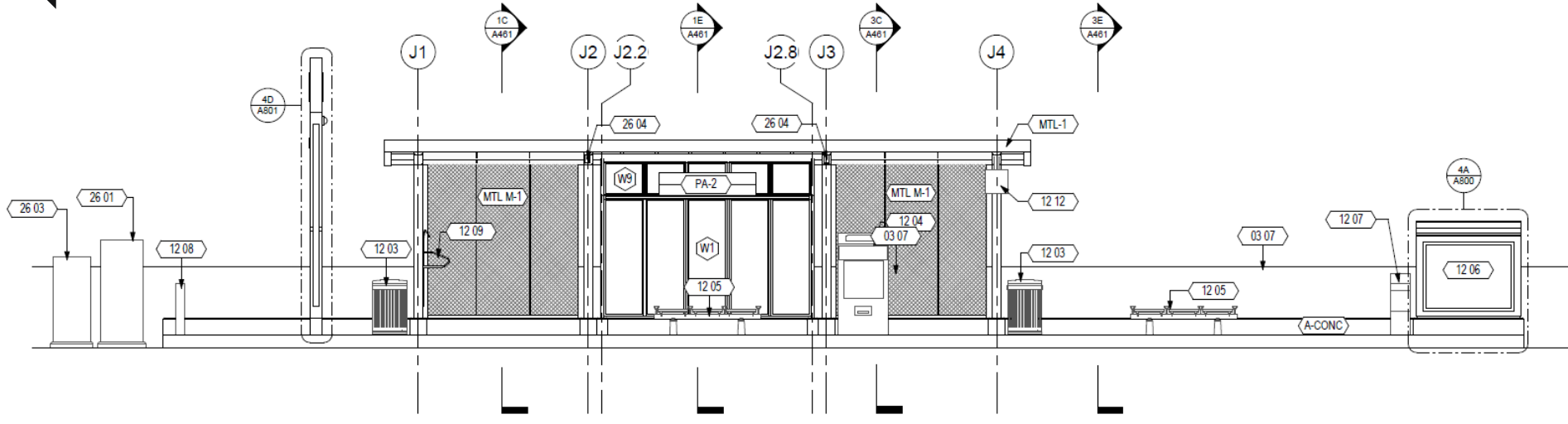
-  MARKER
-  INFORMATION KIOSK
-  TICKET VENDING MACHINE (BY OTHERS)
-  TICKET VALIDATOR (BY OTHERS)
-  TRASH RECEPTACLE
-  BENCH
-  VERTICAL BIKE RACK
-  2' WIDE TACTILE WARNING PLATES



Southbound 66th Street Station Elevation



← South to I-35W



1C 66TH STREET SOUTHBOUND - ELEVATION
0 3 6 9

I-35W on ramp

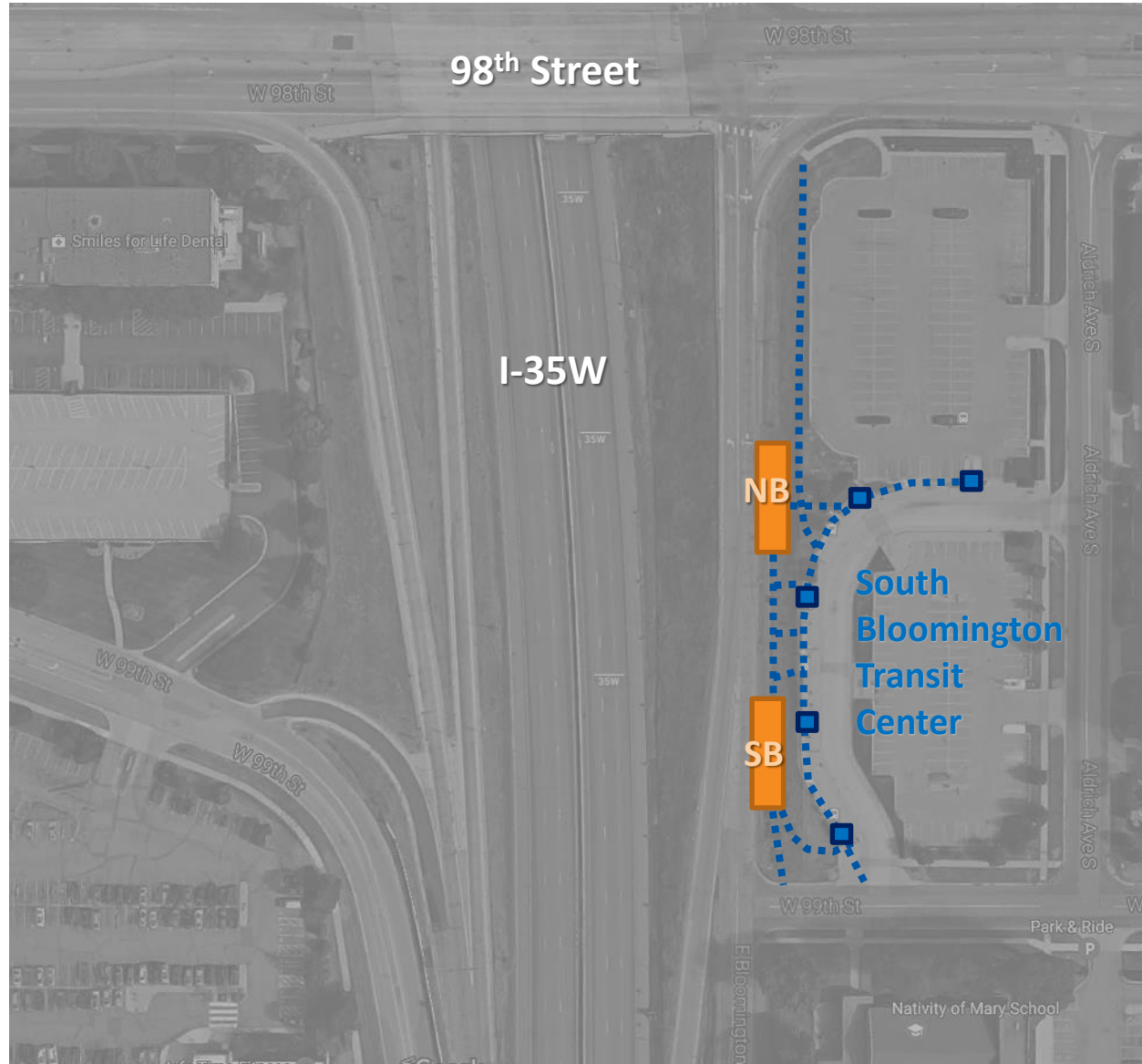
KEYNOTES



- 03 07 RETAINING WALL, SEE CIVIL/STRUCTURAL
- 08 01 POLYCARBONATE CANOPY
- 12 02 MARKER
- 12 03 WASTE RECEPTACLE, SEE URBAN DESIGN DWGS
- 12 04 TICKETING VENDING MACHINE, SEE COMMUNICATIONS DESIGN DWGS
- 12 05 BENCH, SEE URBAN DESIGN DWGS
- 12 06 KIOSK
- 12 07 SMART CARD VALIDATOR, SEE URBAN DESIGN DWGS
- 12 08 BOLLARD, SEE URBAN DESIGN DWGS
- 12 09 VERTICAL BIKE RACK
- 12 12 VARIABLE MESSAGE SIGN, SEE COMMUNICATIONS DRAWINGS
- 26 01 ELECTRICAL CABINET, SEE ELECTRICAL DWGS
- 26 03 COMMUNICATION CABINET, SEE COMMUNICATION DWGS
- 26 04 LIGHT, SEE ELECTRICAL DRAWINGS

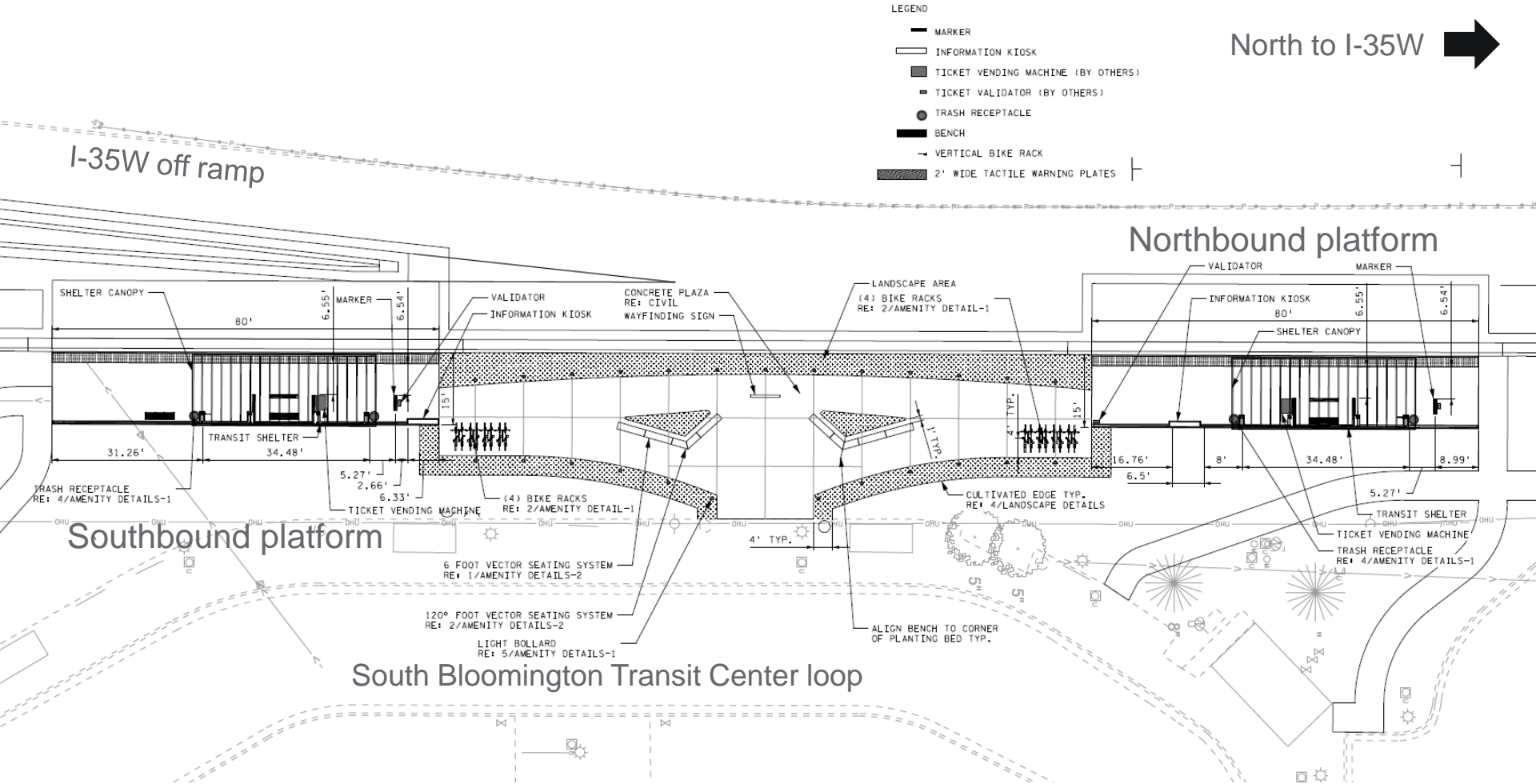
MATERIAL OR TYPE KEYNOTES

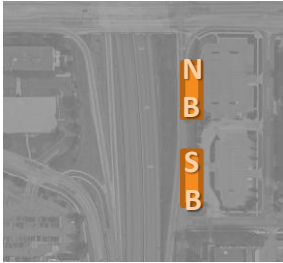
- A-CONC ARCHITECTURAL CONCRETE
- MTL M-1 EXPANDED METAL MESH
- MTL-1 METAL FLASHING, STAINLESS STEEL
- PA-2 SIGNAGE

98th Street – platforms & connecting bus stops



-  Connecting service bus stops
-  walking routes

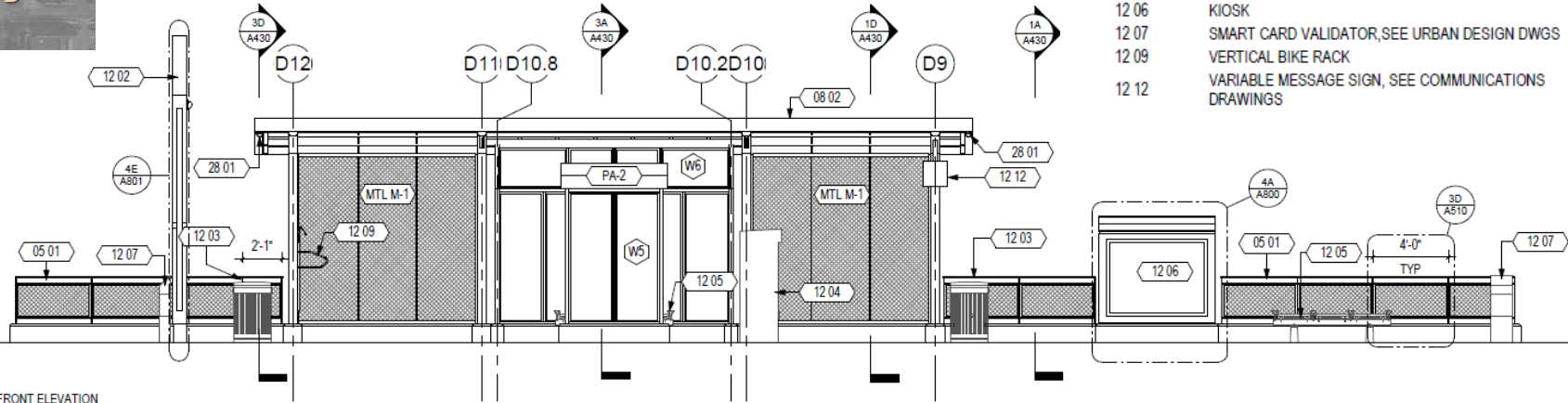




KEYNOTES

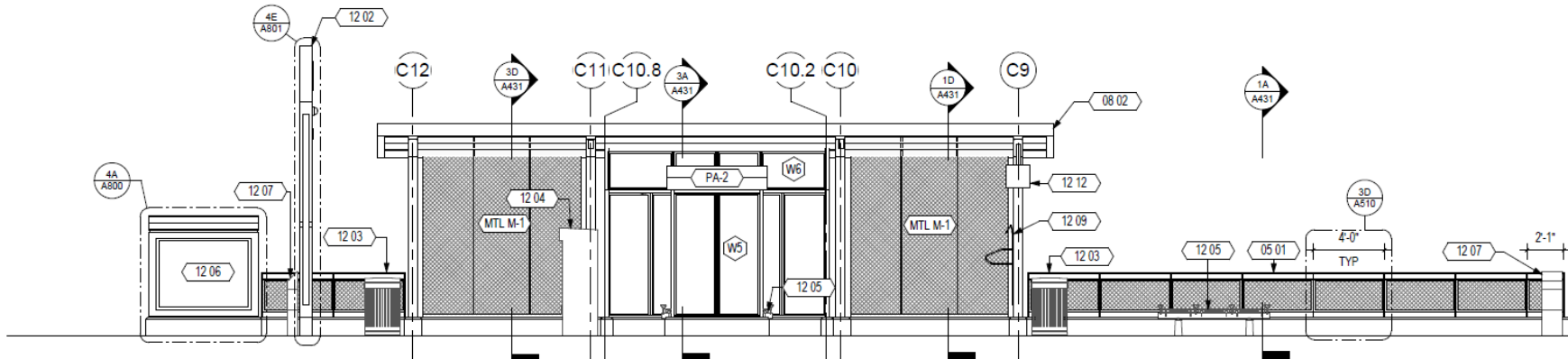
- 05 01 GUARDRAIL WITH METAL MESH
- 08 02 POLYCARBONATE CANOPY ABOVE
- 12 02 MARKER
- 12 03 WASTE RECEPTACLE, SEE URBAN DESIGN DWGS
- 12 04 TICKETING VENDING MACHINE, SEE COMMUNICATIONS DESIGN DWGS
- 12 05 BENCH, SEE URBAN DESIGN DWGS
- 12 06 KIOSK
- 12 07 SMART CARD VALIDATOR, SEE URBAN DESIGN DWGS
- 12 09 VERTICAL BIKE RACK
- 12 12 VARIABLE MESSAGE SIGN, SEE COMMUNICATIONS DRAWINGS

Northbound platform



1B 98TH STREET NORTHBOUND-FRONT ELEVATION

Southbound platform



1A 98TH STREET STATION SOUTHBOUND-FRONT ELEVATION



Burnsville Parkway Station

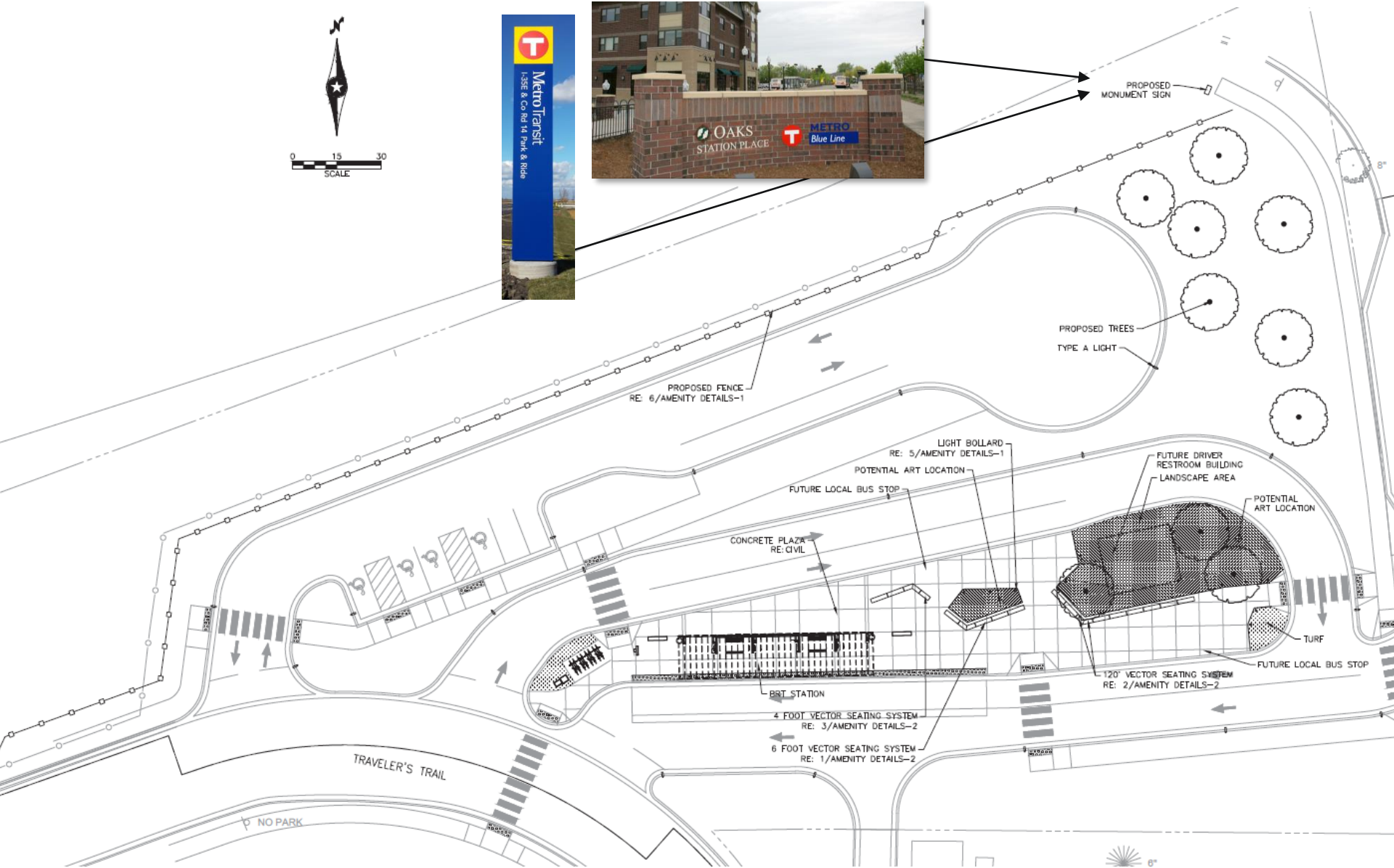


- Connecting northbound bus stops
- Connecting southbound bus stops
- ⋯ walking route
- ⋯ walking route

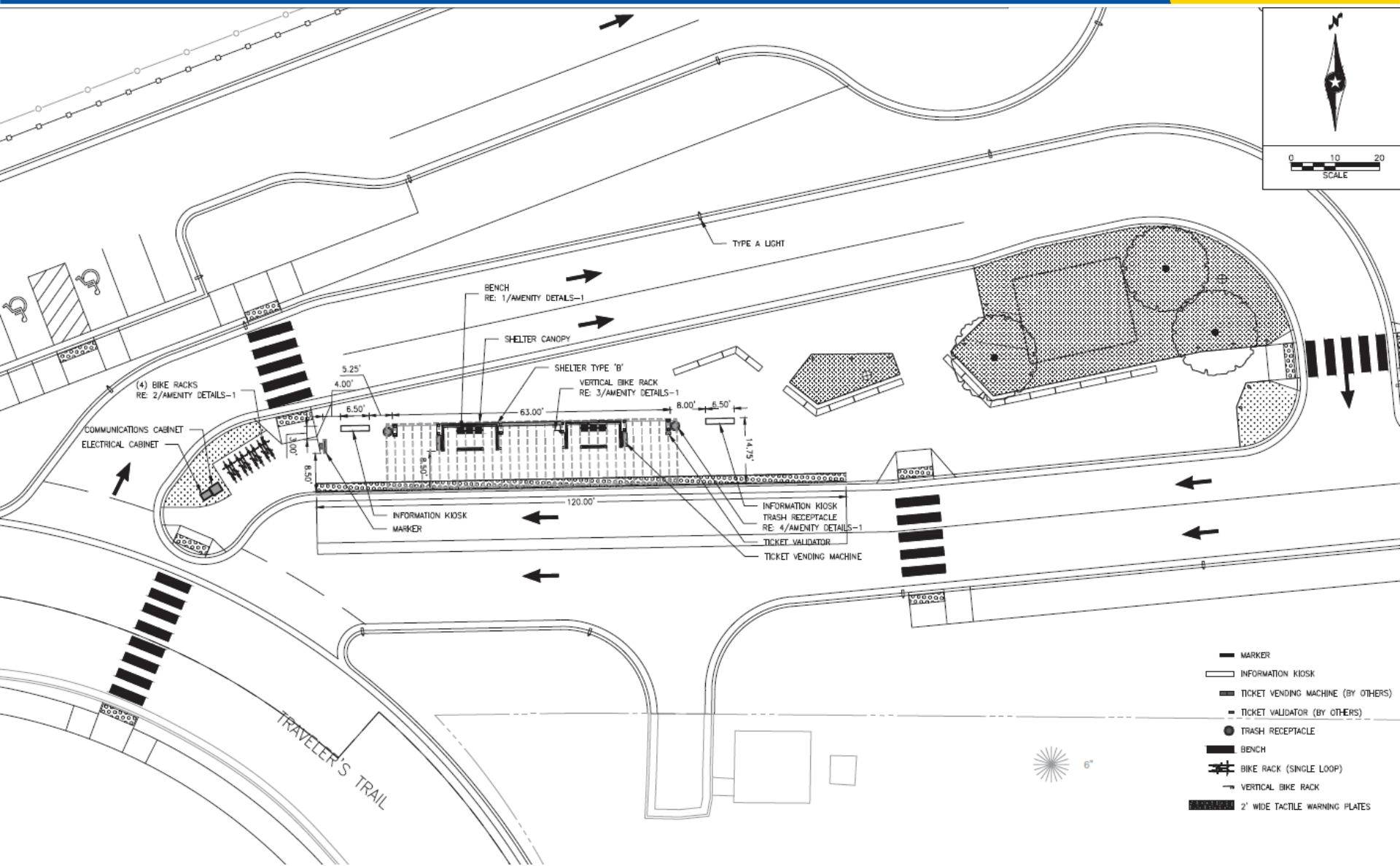
Nicollet Avenue Station



Nicollet Avenue Station

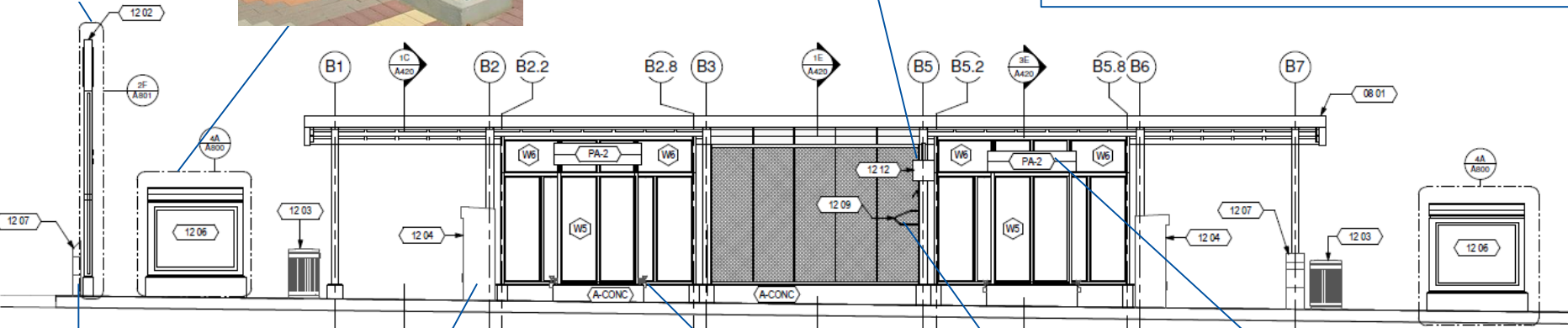
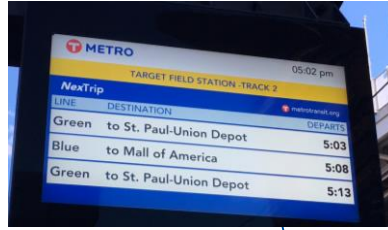


Nicollet Avenue Station



- MARKER
- INFORMATION KIOSK
- TICKET VENDING MACHINE (BY OTHERS)
- TICKET VALIDATOR (BY OTHERS)
- TRASH RECEPTACLE
- BENCH
- BIKE RACK (SINGLE LOOP)
- VERTICAL BIKE RACK
- 2' WIDE TACTILE WARNING PLATES

Station Furnishings & Elevation



Ideas offered by City of Burnsville:

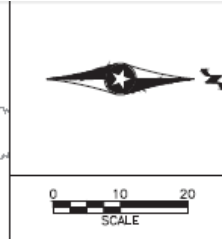
1. Use of materials such as limestone and brick, use of antique bronze color for the shelter area
2. Signage and wayfinding opportunities, use of City of Burnsville logo
3. Textured sidewalks, pavers, and/or color impregnated sidewalks
4. Decorative fencing, pedestrian scale lighting, and bollards where appropriate
5. Public art opportunities
6. Simple metal detailing for benches and trash receptacles
7. Tree grates, rainwater gardens, planter boxes, and landscaping



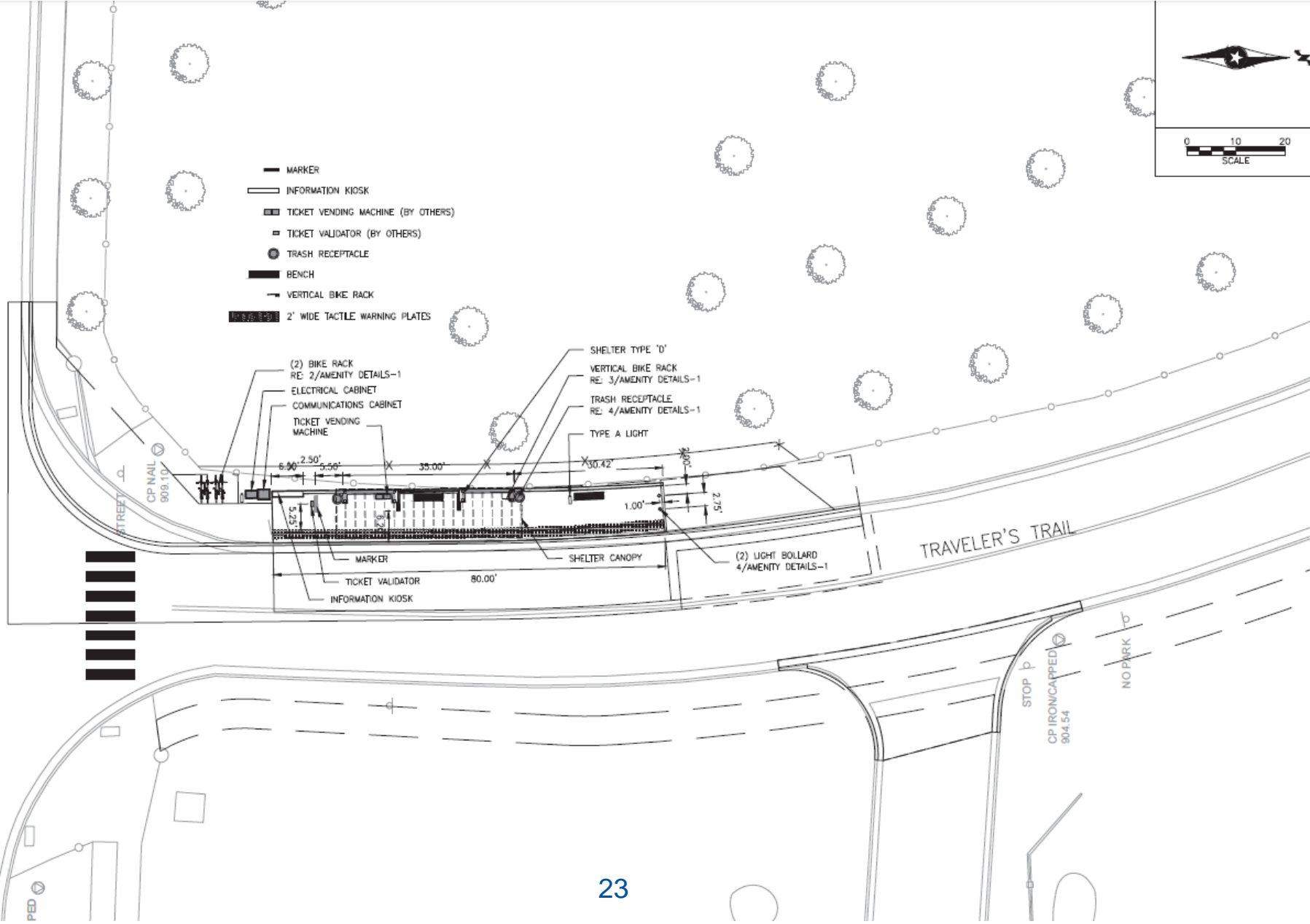
Burnsville Parkway Station

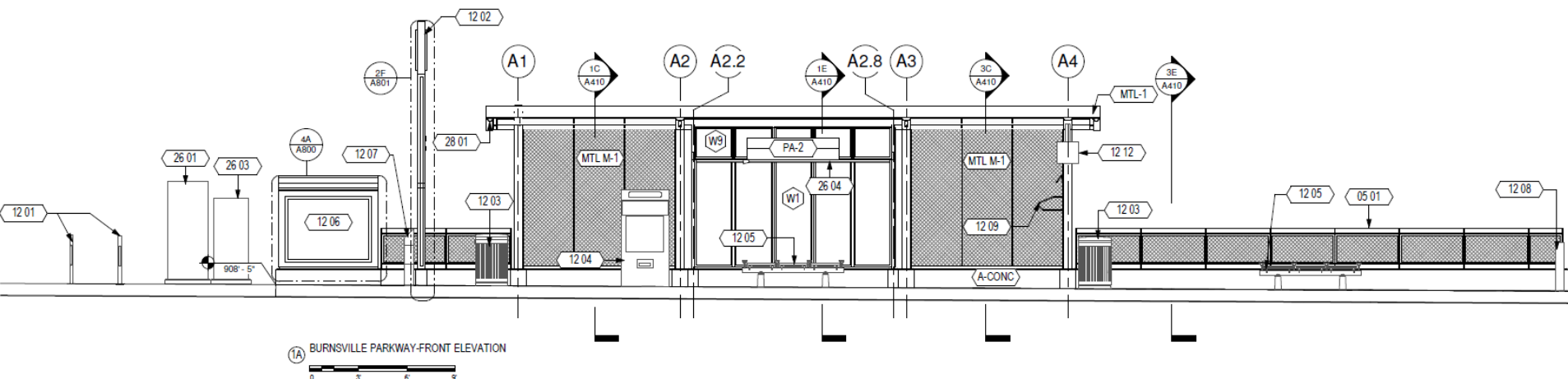


BURNSVILLE PARKWAY



- MARKER
- INFORMATION KIOSK
- TICKET VENDING MACHINE (BY OTHERS)
- ▣ TICKET VALIDATOR (BY OTHERS)
- TRASH RECEPTACLE
- ▬ BENCH
- VERTICAL BIKE RACK
- ▨ 2' WIDE TACTILE WARNING PLATES





KEYNOTES

05 01	GUARD RAIL WITH METAL MESH
08 01	POLYCARBONATE CANOPY
12 01	MOUNTED LOOPED BIKE RACK, SEE URBAN DESIGN DWGS
12 02	MARKER
12 03	WASTE RECEPTACLE, SEE URBAN DESIGN DWGS
12 04	TICKETING VENDING MACHINE, SEE COMMUNICATIONS DESIGN DWGS
12 05	BENCH, SEE URBAN, DESIGN DWGS
12 06	KIOSK
12 07	SMART CARD VALIDATOR, SEE URBAN DESIGN DWGS
12 08	BOLLARD, SEE URBAN DESIGN DWGS
12 09	VERTICAL BIKE RACK
12 12	VARIABLE MESSAGE SIGN, SEE COMMUNICATIONS DRAWINGS
26 01	ELECTRICAL CABINET, SEE ELECTRICAL DWGS
26 03	COMMUNICATION CABINET, SEE COMMUNICATION DWGS
26 04	LIGHT, SEE ELECTRICAL DRAWINGS
28 01	Security camera, see communication drawings

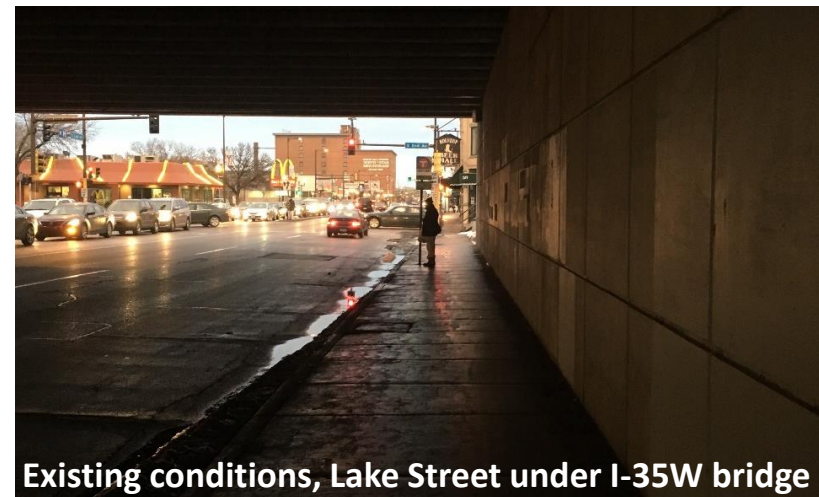
MATERIAL OR TYPE KEYNOTES

A-CONC	ARCHITECTURAL CONCRETE
MTL M-1	EXPANDED METAL MESH
MTL-1	METAL FLASHING, STAINLESS STEEL
PA-2	SIGNAGE

- Station naming update
- MnDOT construction phasing presentation
 - Hwy 62 to Downtown
- Real Estate approach & Knox Ave Transitway operations
- 76th Street station area
 - Platform location
 - Trail connection
- METRO signage & technology coordination
- Update on accessibility design features
- 60% design submittal
 - 76th Street
 - American Blvd
 - Knox Ave Transitway + wall aesthetics
 - Downtown
 - 46th Street



Existing conditions, I-35W at Lake Street



Existing conditions, Lake Street under I-35W bridge

Get more information or sign-up for our newsletter at
www.metrotransit.org/orangeline

