



60% Design Presentation
October 8, 2020



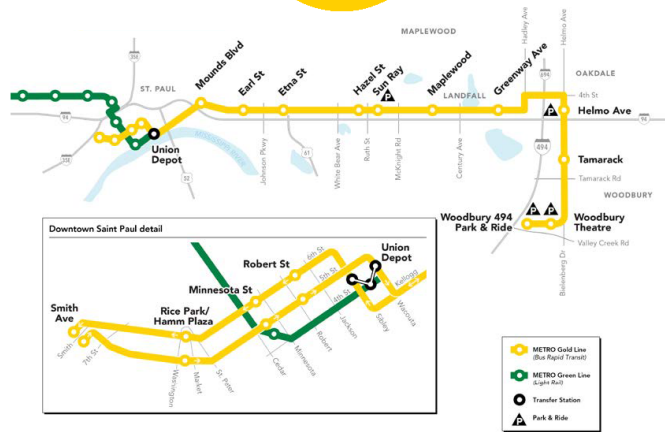
60% Naqshadda La Soo Bandhigay
Qoraalka Fiidiyoowga oo Af Soomaali ah

A new transit line that will connect the East Metro and Saint Paul

Ten-mile route through Saint Paul, Maplewood, Landfall, Oakdale and Woodbury

Twenty-one new stations between downtown Saint Paul and Woodbury

Bus-only lanes constructed north of I-94



Soo Dhawaada. Magacayga waa Liz Jones waxaana ahay Xiriiriyaha Bulshada ee Mashruuca Khadka METRO Gold Line ee Baska Dheereeya waxaana idiin soo bandhigayaa naqshadda mashruuca oo la dhameystiray ilaa 30%.

Waxa aan shidayaa kaamaradayda si aan xoogga u saarno bandigga aan idiin sameynayo.

Hagaag, aan ku bilaabo, in aad idiin soo gudbiyo dulmar guud oo ku saabsan mashruuca Waa mashruuca Gold Line waa mid basaska dheereeya ah. Oo ka taga faras magaalada Saint Paul ee ilaa bariga St. Paul iyo Mapplewood, Landfall, Oakdale, iyo Woodbury. Waxa aan dhex mareynaa sidoo kale Degmada ramsey iyo Washington.

Khadka Gold Line oo dhan waxa dhererkiisu yahay 10 mayl. Waxaa la dhisayaa ilaa 21 xarumood oo laga raaco basaska iyada oo Gold Line uu ka duwan yahay khadadka kale, basaska kale ee dheereeya, iyada oo uu soconayo baska aasaaska u ah oo kaliya.

Waxaa la filayaa in dhismaha mashruucu bilowdo 2020 oo uu hawshiisa bilaabo 2024.

Minnesota's first Bus Rapid Transit (BRT) line that will operate primarily within exclusive bus-only lanes



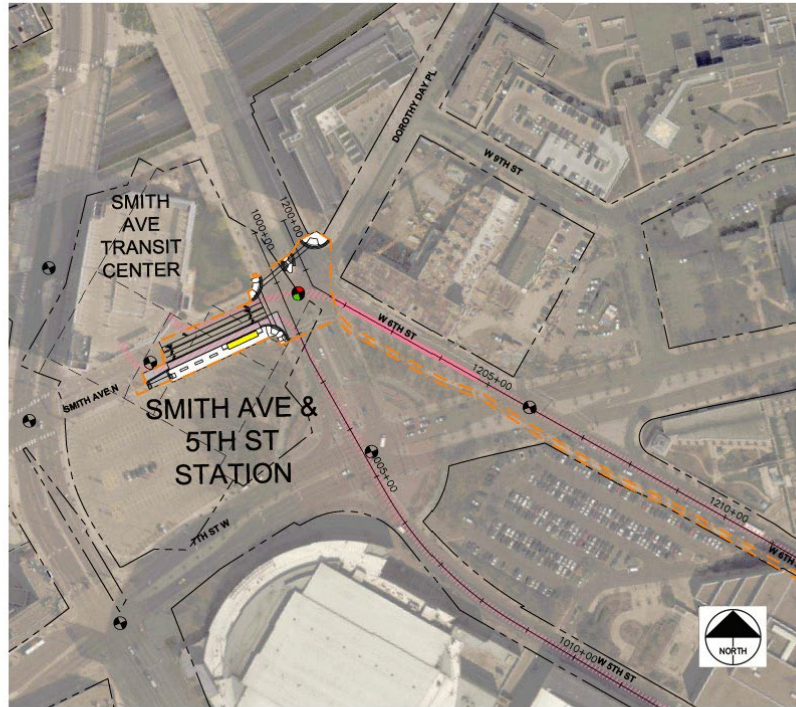
▲ BRT in bus-only lanes

Haddii aadan aqoon hore u laheyn basaska dheereeya, waa ay ka duwan yihiin basaska caadiga ah. Sidaa darteed ayaa Metro Transit ay u leedahay tiro yar oo ah basaska dheereeya oo mara khadadka caadiga ah ee loo yaqaan khadka A Iyo khadka C, sida aan horey u soo sheegay, khadka Gold Line waxa uu noqonayaa midkii iskii u taagan. Si adeegga ku haboon looga faa'iideysto marka lala barbardhigo sida uu iminka yahay basaska dheereeya.

Basaska si ka yar duwan ayey u shaqeeyaan. Waa sida tareen wadada ku socda oo kale, Waxa aad lacagta bixineysaa ka hor inta aadan raacin. Adeegu waa mid is daba joog ah, Goobaha laga raacana waxa ay leeyihiin waxyaabo dheeraad ah oo ka duwan kuwa basaska caadiga ah.

Waa mid munaasib ku ah, dheereeya, adeegooduna ka dhaqso badan yahay.

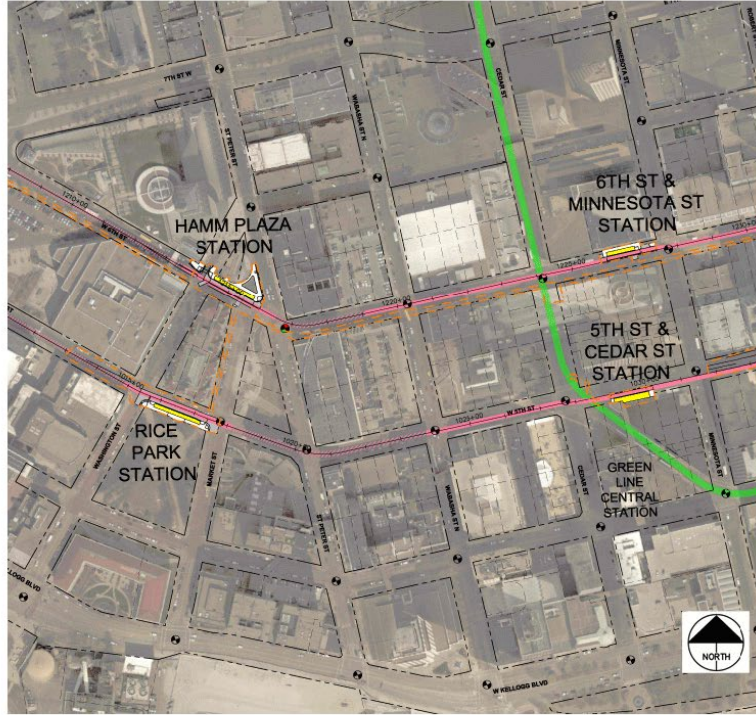
Smith Avenue & 5th Street Station



Waxa ay ka bilowdaan faras magaalaha Saint Paul. Bilowga Gold Line waa Xarunta Gaadiidka ee Wadada Smith, oo dhinaca ku heysa Xcell Energy Center.

Ka dib waxa uu Gold Line maraa Wadada 5aad iyo 6aad Kuwaasi waa kuwo jiho kaliya u socda.

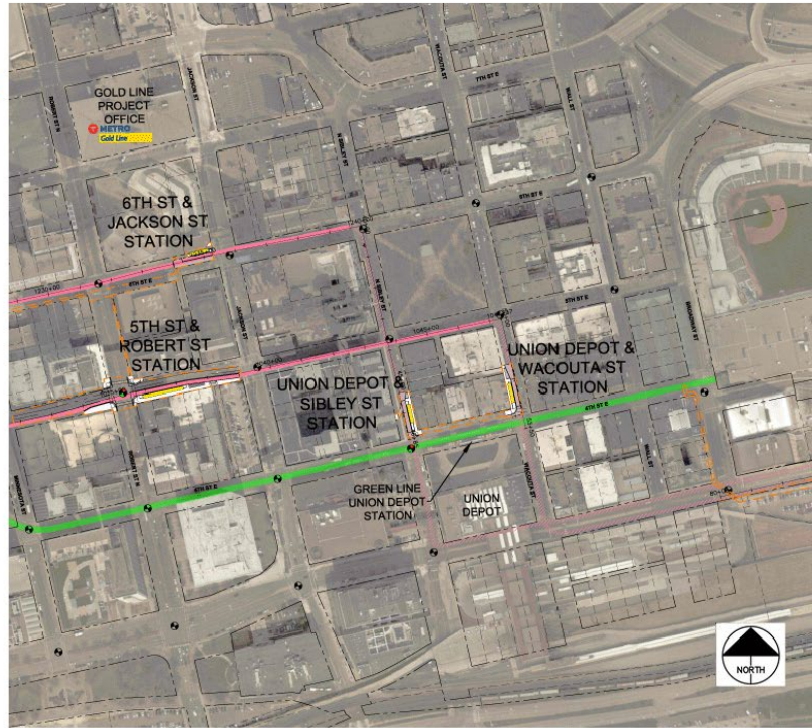
**Rice Park/Hamm Plaza
Stations and 5th Street &
Cedar Street/6th Street &
Minnesota Street Stations**



Sidaa darteed waxaa jiraya xarumo laga raaco ee Wadada 6aad iyo Hamm Plaza iyo sidoo kale Xarunta Wadada 5aad iyo Rice Park.

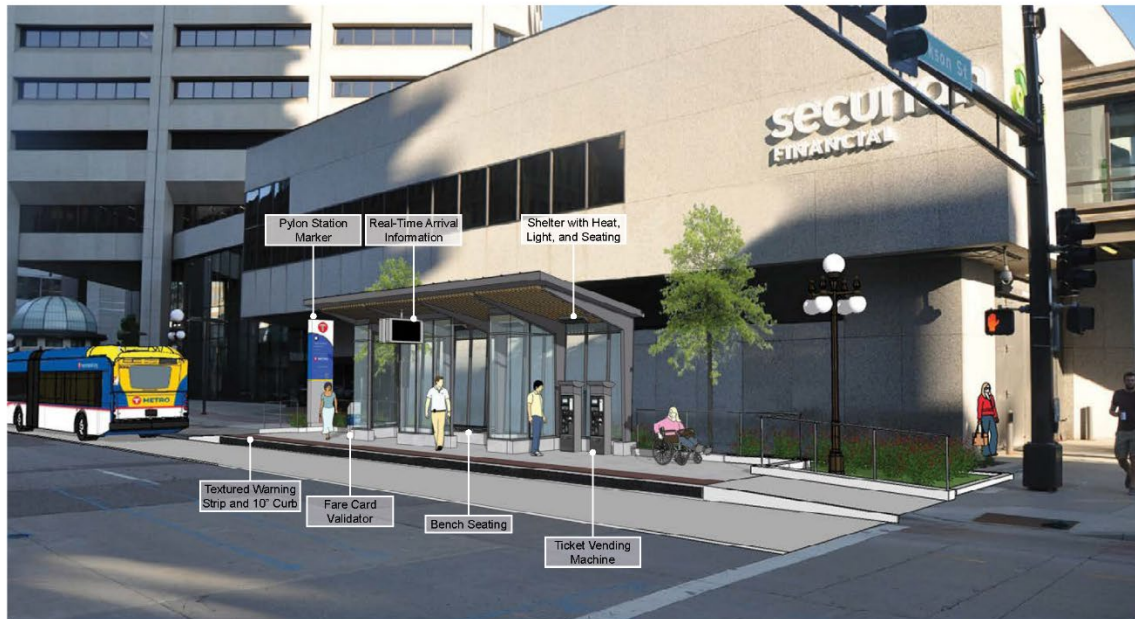
Iyo sidoo kale Landmark Center, faras magaalaha Saint Paul. Waxaa kale oo jiraya xarumo kale oo laga raaco ee Wadooyinka Minnesota iyo Robert.

5th Street & Robert Street/6th Street & Jackson Street Stations and Union Depot Stations: 4th Street & Sibley Street/Wacouta Street



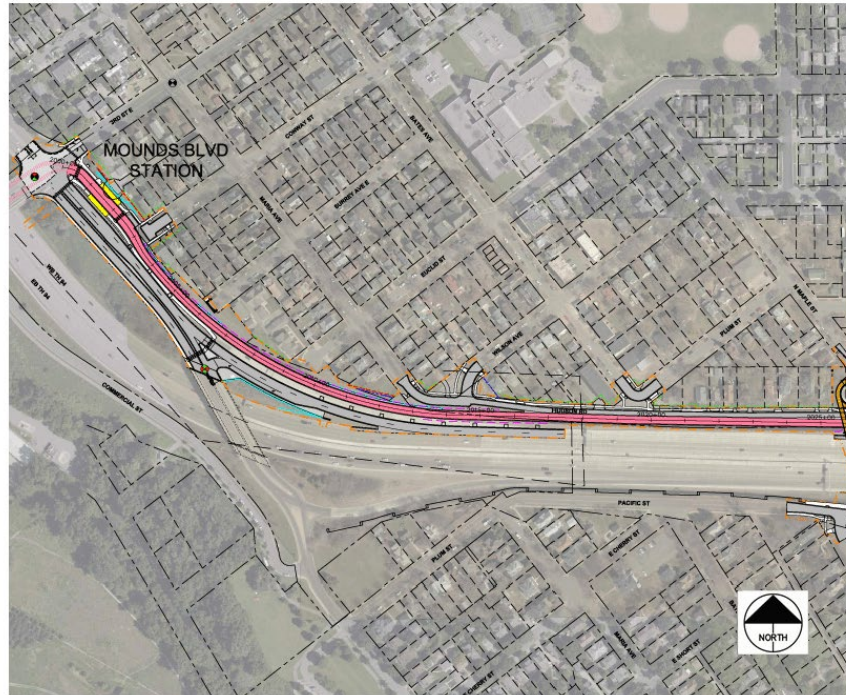
Iyo xarunta ugu dambeysa ee lagaga baxo faras magaalaha St. Paul oo u dhow Union Depot, ee Wadada 4aad iyo Sibley iyo Wadada 4aad iyo Wacouta.

Downtown Saint Paul Station Illustration



[Ma jirayo hadal; muusig la maqlayo. Faahfaahinta muuqaalka: Halkan waxaa ku xusan tusaale muujinaya sida xarunta gaadiidka ee faras magaalaha St. Paul u ekeeneyso.]

**Mounds
Boulevard Station**



Khadka Gold Line waxa uu u gudbayaa oo uu ka baxayaa faras magaalaha isaga oo dulmaraya buundada Kellog una gudbaya dhinaca Bariga (East Side) ee wadada Mounds Boulevard, halkaas oo xarun kale uu ku leeyahay inta aysan Kellog ku leexan wadada Sadexaad.

Waxa aad arkeysaa khadka midabka basali xigeenka (pink) ee u eg midabka kaluunka salmon, uu yahay khadka baska kaliya loogu talo galay meelaha ka baxsan faras magaalaha. Kama dhiseyno faras magaalaha St. Paul khad bas oo cusub.

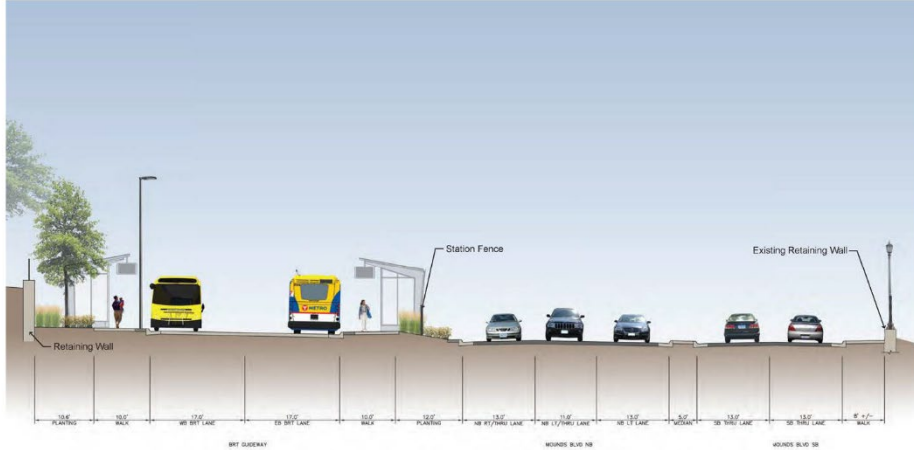
Sidaa darteed khadadka midabka basali xigeenka ah ayey basasku ku soconayaan wadada Mounds Boulevard ee xaafada Dayton Bluff.

Mounds Boulevard Station Site Plan

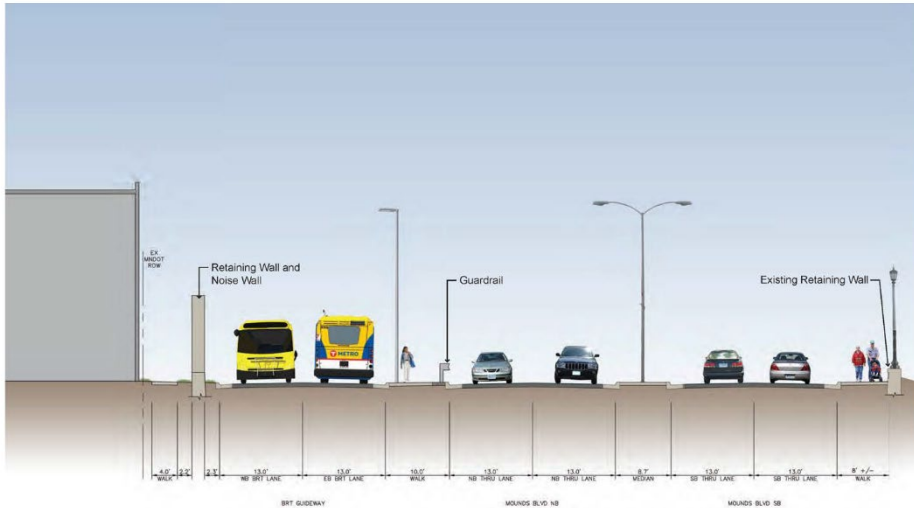


[Ma jirayo hadal; muusig la maqlayo. Faahfaahinta muuqaalka: Muuqaalkani waxa uu muujinayaa qorshaha goobta ee Xarunta Mounds Boulevard. Khadadka lagu calaamadeeyey A iyo C waa halka basasku ka talaabaan iyo khadadka lagu socdo (akhri muuqaalada soo socda).]

Mounds Boulevard Station
Cross Section A

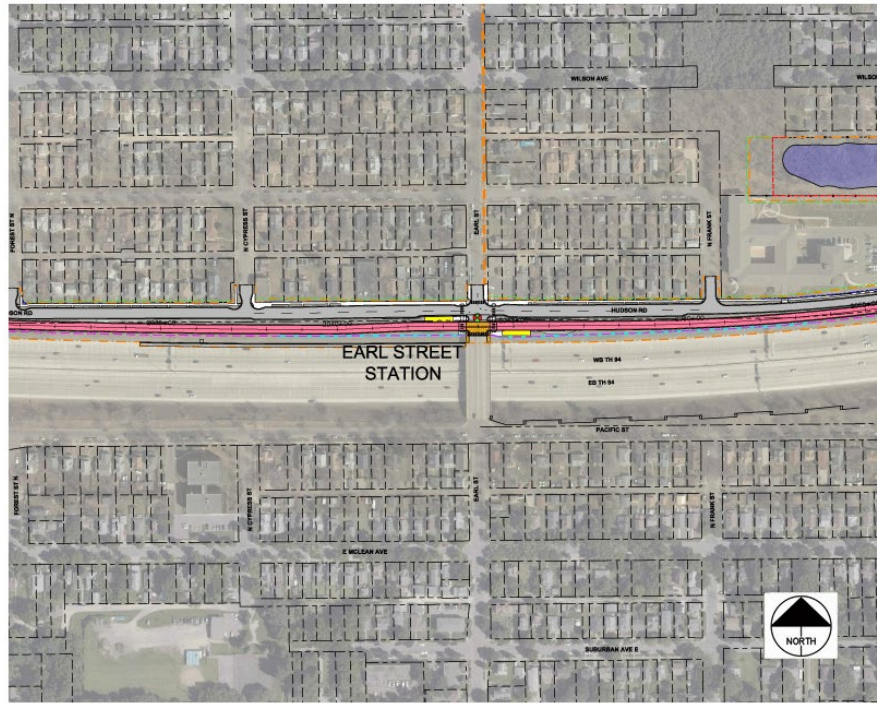


Mounds Boulevard Station
Cross Section C



[Ma jirayo hadal; muusig la maqlayo. Faahfaahinta muuqaalka: Halkani waa halka basasku ka talaabaan iyada khadadka lagu socdo iyada oo lagu calaamadeeyey A iyo C Ee qorshaha goobta.]

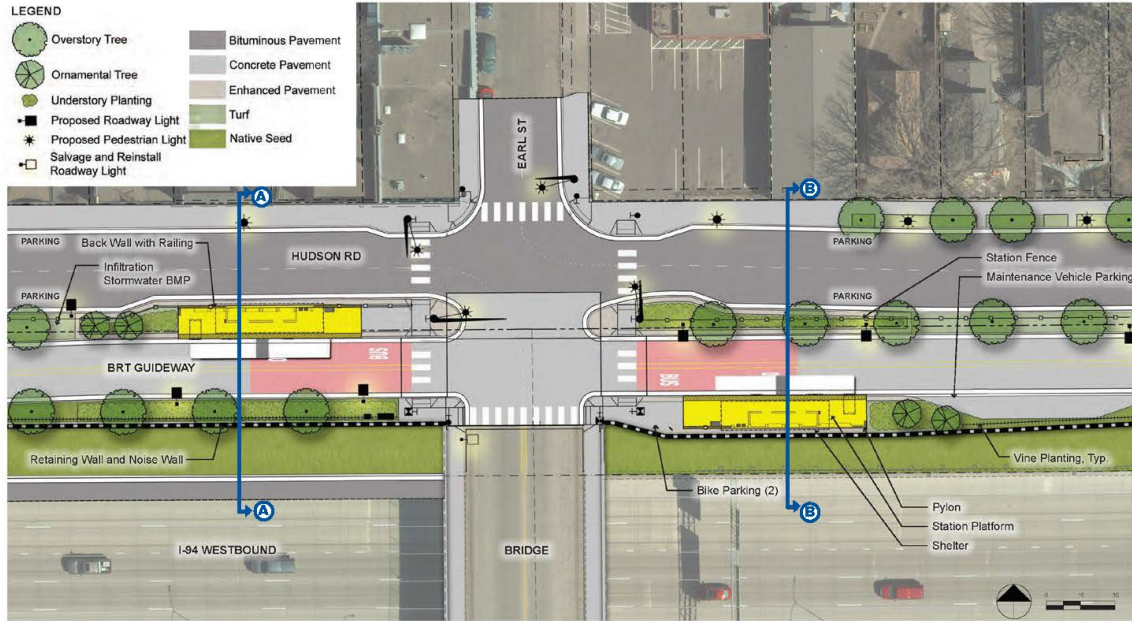
Earl Street Station



Ka dibna u gudbaya bariga, waxa kale oo xarig laga dhisaya Wadooyinka Huston iyo Earl. Halkan weeye meesha mashruucu isku bedelay 15% naqshadda mashruuca.

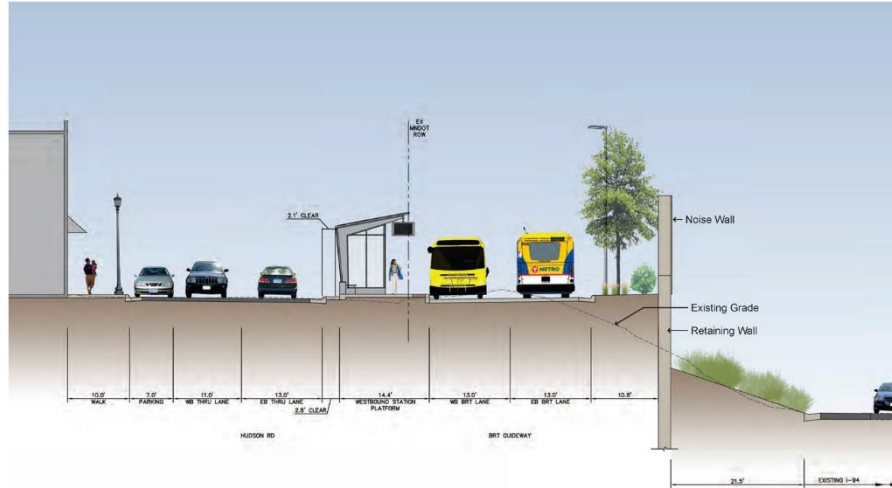
Waxaa jiri doonta wado labada dhinac loogu socdo inta u dhaxeysa Wadada Cyprus iyo Frank iyada oo naqshadeenu gaartay 15%. waxaanu ku tusnay waddo gaadiidku jiho kaliya u socdo. Laakiin waxa aan dhab ahaantii ku guuleysanay in aan dhul dheeraad ah ka helno si wadadu u noqoto mid labada jhaba gaadiidku ugu socdo.

Earl Street Station Site Plan

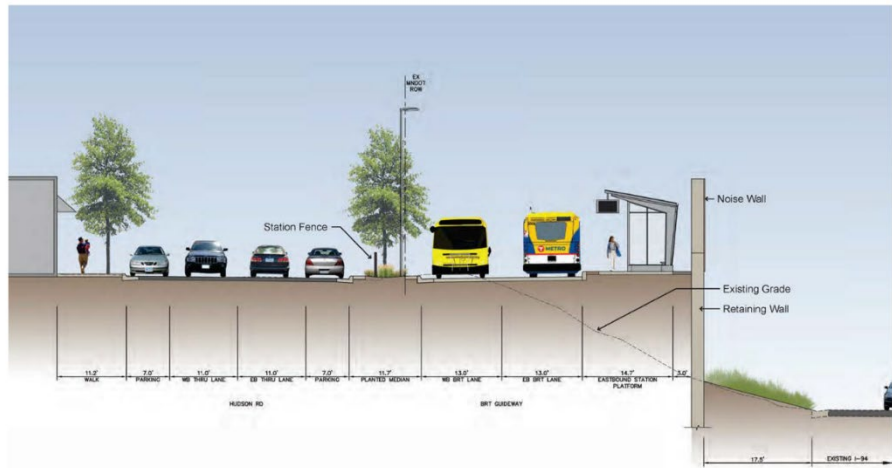


[Ma jirayo hadal; muusig la maqlayo. Faahfaahinta muuqaalka: Muuqaalkani wuxuu muujinayaa qorshaha goobta. Khadadka lagu calaamadeeyey A iyo B waa halka basasku ka talaabaan iyo khadadka lagu socdo (akhri muuqaalada soo socda).]

**Earl Street Station
Cross Section A**

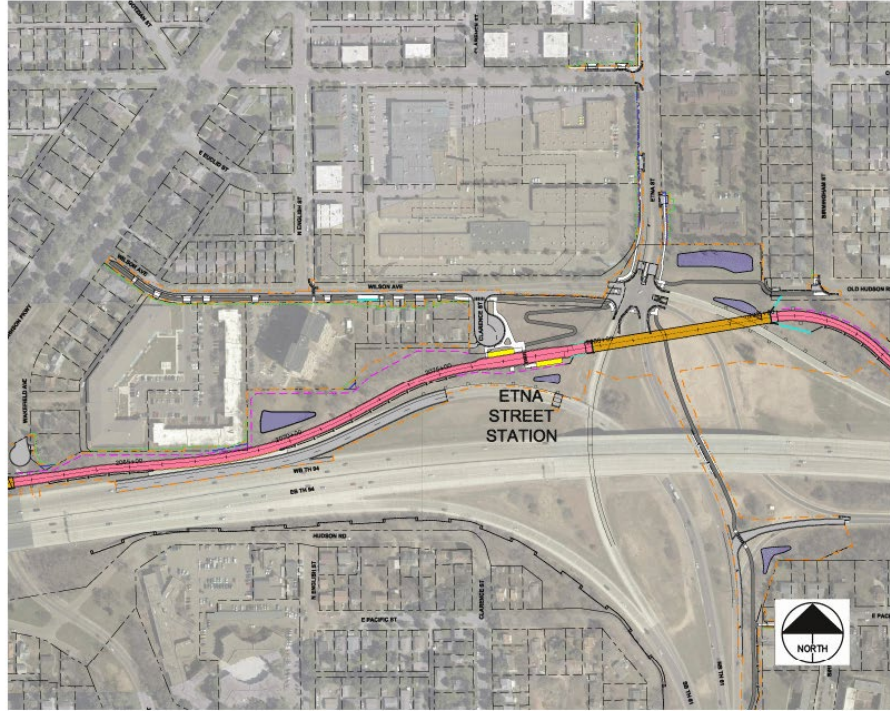


**Earl Street Station
Cross Section B**



[Ma jirayo hadal; muusig la maqlayo. Faahfaahinta muuqaalka: Halkani waa halka basasku ka talaabaan iyada khadadka lagu socdo iyada oo lagu calaamadeeyey A iyo B Ee qorshaha goobta.]

**Etna Street
Station**



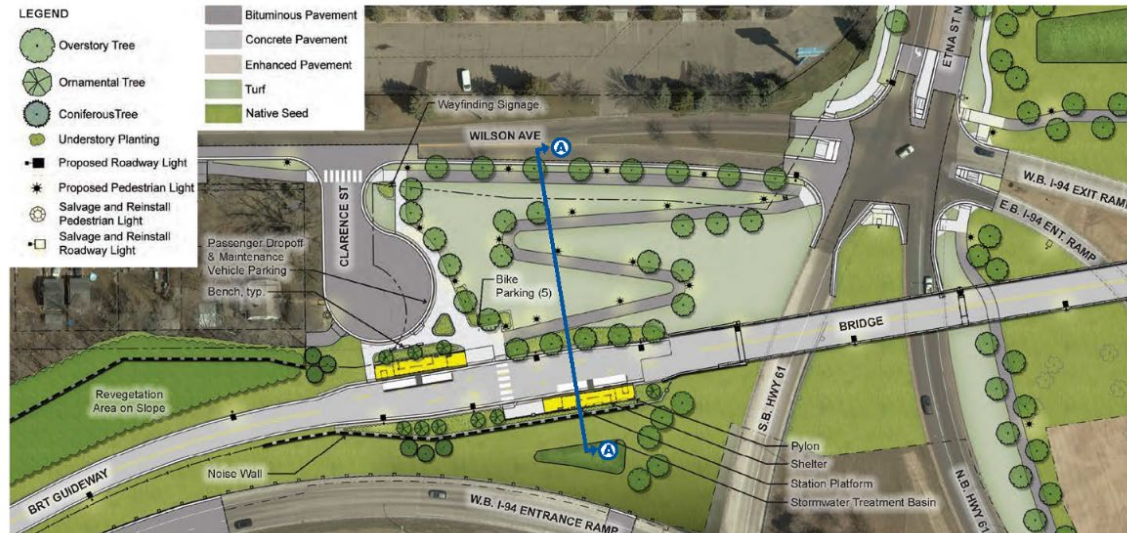
Marka loo sii gudbo, bariga Waxa uu mashruucu xarun ku yeelanayaa meel u dhow Wadada Etna Taasi waxa ay noqoneysaa mid gebi ahaanba ka duwan sida ay maanta tahay.

Halkan waa meesha uu kaga darsamo Wadada Weyn ee 61. Wadada Wilson ayaa halkaas ku taal. Halkaas waxaa laga dhisayaa xarun kale.

Qaar ka mid ah isbedelka lagu sameeyey naqshadda 15% waxaa ka mid ah in lagu daray wado lugeedyo, wadooyinka isku xira wadooyinka bushkuleetiyada iyo dhameystir lagu sameeyey xarumaha laga raaco gaadiidka iyo wado lugeedyada soo gala iyo naqshada dadka lugeynaya u fududeyneysa in ay soo gaaraan xarunta.

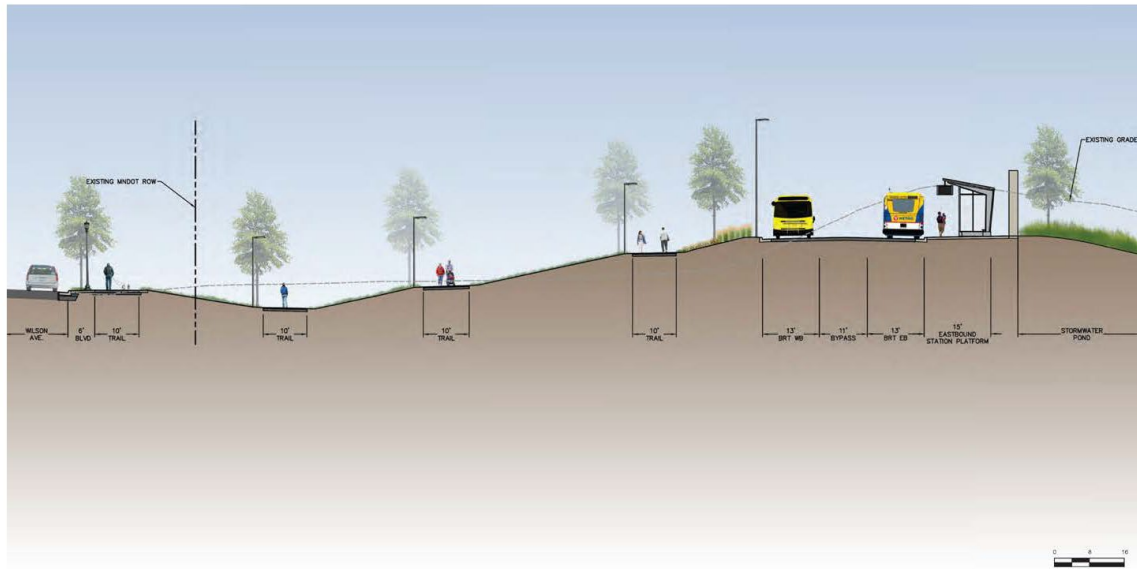
Gold Line waxa uu ka talaabayaa isgoyska Wadada 61 si aanay basasku ciriiri ugala kulmin gaadiidka wadada goynaya. Sidaa darteed, dhulkan oo dhan waxa uu noqonayaa khadka baska oo kaliya oo lagaga bedelanayo basaska.

Etna Street Station Site Plan



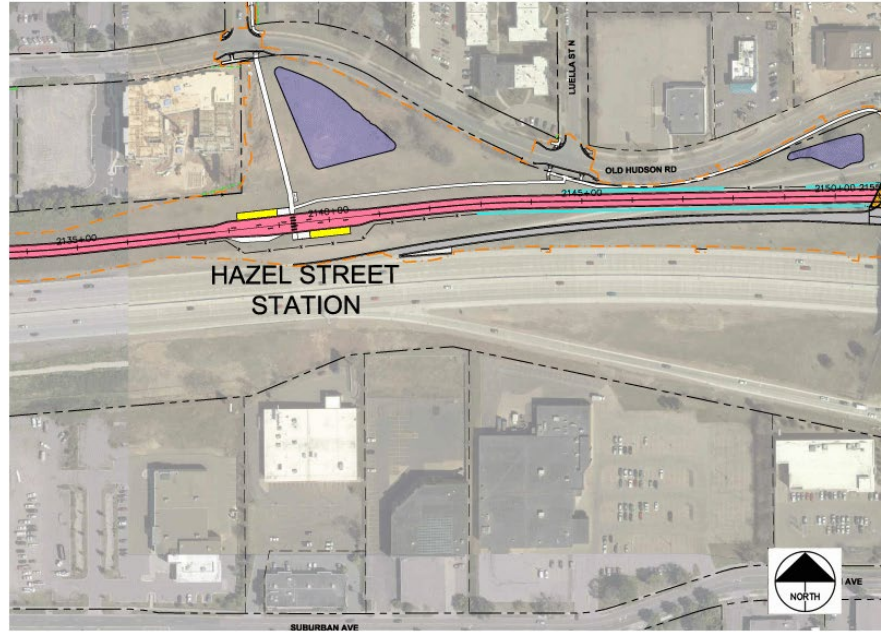
[Ma jirayo hadal; muusig la maqlayo. Faahfaahinta muuqaalka: Muuqaalkani wuxuu muujinayaa qorshaha goobta. Halakni waa goobta basasku ka talaabaan iyo khadka ay maraan ee la socda khadka lagu calaamdeeyey A ee qorshaha goobta (akhri muuqaalada soo socda).]

Etna Street Station Cross Section A



[Ma jirayo hadal; muusig la maqlayo. Faahfaahinta muuqaalka: Halakni waa goobta basasku ka talaabaan iyo khadka ay maraan ee la socda khadka lagu calaamdeeyey A ee qorshaha goobta.]

Hazel Street Station



Marka loo sii socdo bariga waxaanu gaareynaa Xarunta Wadada Hazel iyada oo xaruntani ay tusaale kale u tahay halka khadka baska oo kaliya ay wadada ku kala baxaan.

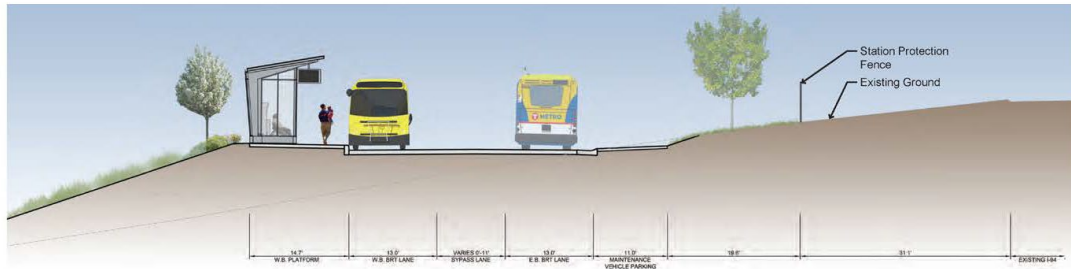
Halkaas waxaa ku yaal Wadada Old Hudson, iyada oo khadka baska kaliya uu marayo dhinaca dambe ee guryaha la degan yahay. oo ay jiraan waddo lugeedyo ku xiraya xarunta laga raaco basaska.

Hazel Street Station Site Plan

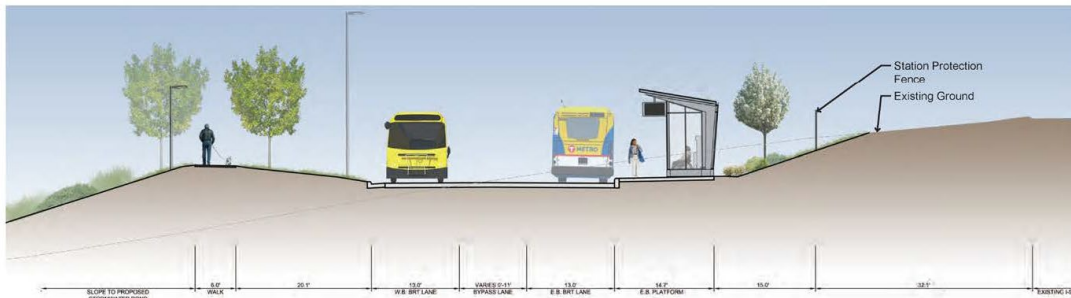


[Ma jirayo hadal; muusig la maqlayo. Faahfaahinta muuqaalka: Muuqaalkani wuxuu muujinayaa qorshaha goobta. Khadadka lagu calaamadeeyey A iyo B waa halka basasku ka talaabaan iyo khadadka lagu socdo (akhri muuqaalada soo socda).]

Hazel Street Station Cross Sections A & B



Section A-A: W.B. Platform (Looking East)

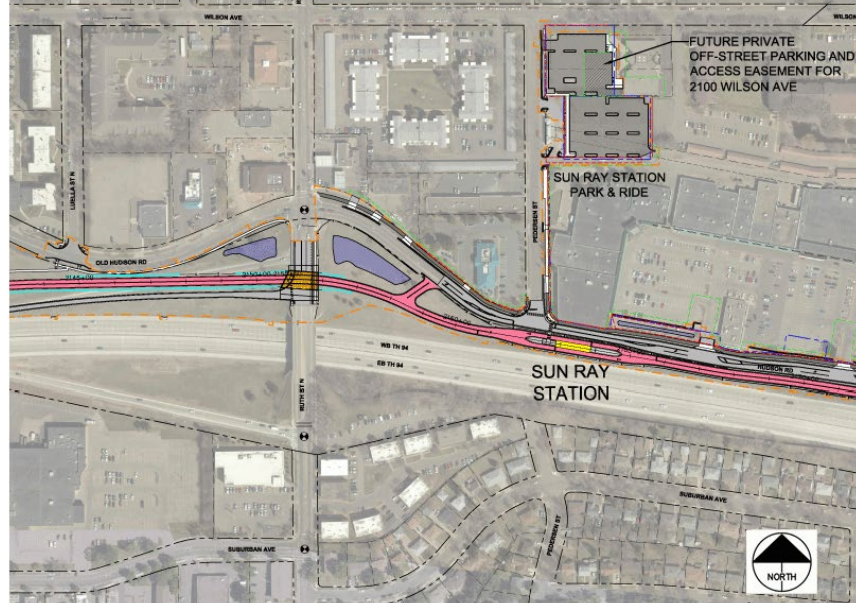


Section B-B: E.B. Platform (Looking East)

DRAFT - WORK IN PROCESS

[Ma jirayo hadal; muusig la maqlayo. Faahfaahinta muuqaalka: Halkani waa halka basasku ka talaabaan iyada khadadka lagu socdo iyada oo lagu calaamadeeyey A iyo B Ee qorshaha goobta.]

Sun Ray Station



Markan waxa aan u gudbeynaa Sun Ray. Halkan Sun Ray waxaa laga dhisayaa xarun. Halkan waxa aad ku aragtaan buundo yar oo jaale, burtuqaal ah oo aad ku aragtaan halka laga duso, sidaa darteed Gold Line waxa uu hoos marayaa Wadooyinka Ruth iyo White Bear si aanu ciriiri uga dhigin gaadiidka wadooyinka iyo agagaarka dhulka uu marayo.

Labadaba hoos ayey u daadegayaan, laakiin Gold Line waxa uu hoos marayaa Wadooyinka White Bear iyo Ruth kaa soo xarun ku leh Sun Ray, waxa aad arkeysaa in xaruntani ay wax yar ka duwan tahay xarumaha kale. Tani waa xarun loogu talo galay in dib looga noqdo. Sidaa darteed hal dhinac ayey ka soo galaan oo dib uga noqdaan iyaga oo ku dajiya kana qaada rakaabka.

Tani waxa ay ka dhigan tahay hal xarun oo laba ka kooban, sidan waxaa loogu talo galay in si haboon looga faa'ideysto dhulka la heysto. Ma aynaan dooneyn in aan wax ka bedelno qaab dhismeedka Xarunta Sun Ray.

Halkaas waxaa ku yaala dukaamada Sun Ray, iyo sidoo kale xarunta gaadiidka laga raaco ee Sun Ray taasoo sideeda ahaaneysa iyo goobta gaadiidka la dhigto lagana raaco oo mashruucan uu dhisayo.

Sun Ray Station Park & Ride Site Plan



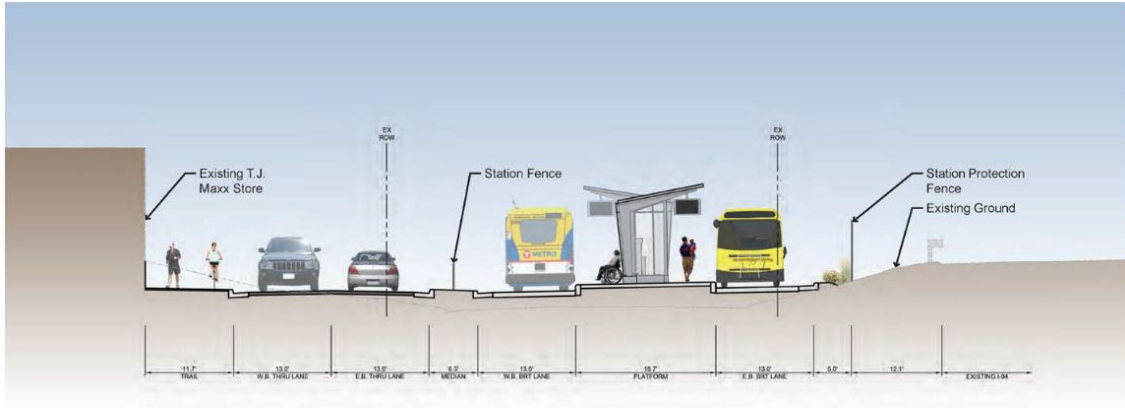
Dhulka oo aad iyo aad u yar darteed, hadana waxaa aan ku dadaalnay in naqshadda xaruntu ay hirgasho. Waxa kale oo aad arkeysaa in lagu daray waddo lugeedyo ay dadku ugu socon karaan xaafadaha, jardiinada Conway, Maktabadda Sun Ray, iyo ilaa dhinaca bariga ee sii durugan.

Sun Ray Station Site Plan



[Ma jirayo hadal; muusig la maqlayo. Faahfaahinta muuqaalka: Muuqaalkani wuxuu muujinayaa qorshaha goobta. Halakni waa goobta basasku ka talaabaan iyo khadka ay maraan ee la socda khadka lagu calaamdeeyey A ee qorshaha goobta (akhri muuqaalada soo socda).]

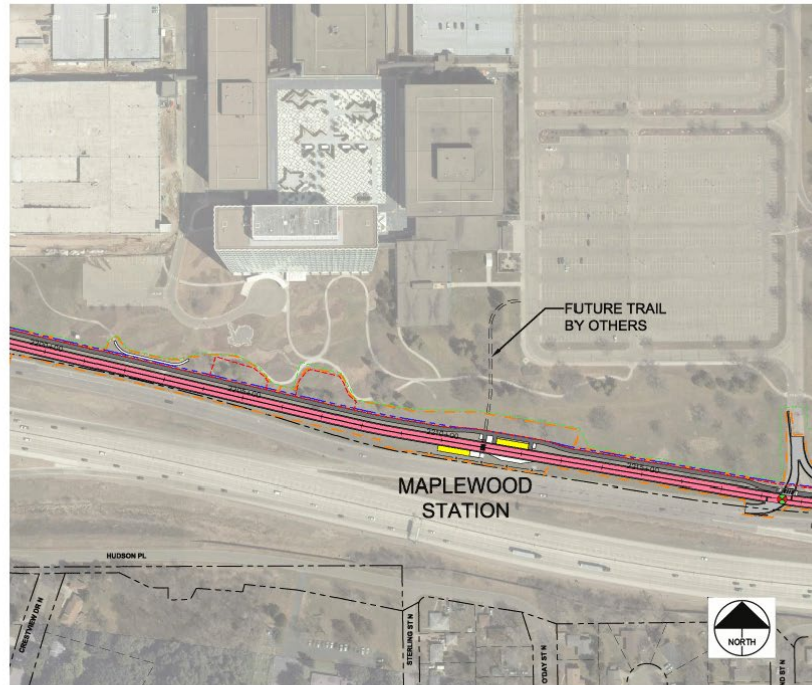
Sun Ray Station Cross Section A



Section A-A: Looking East

[Ma jirayo hadal; muusig la maqlayo. Faahfaahinta muuqaalka: Halakni waa goobta basasku ka talaabaan iyo khadka ay maraan ee la socda khadka lagu calaamdeeyey A ee qorshaha goobta.]

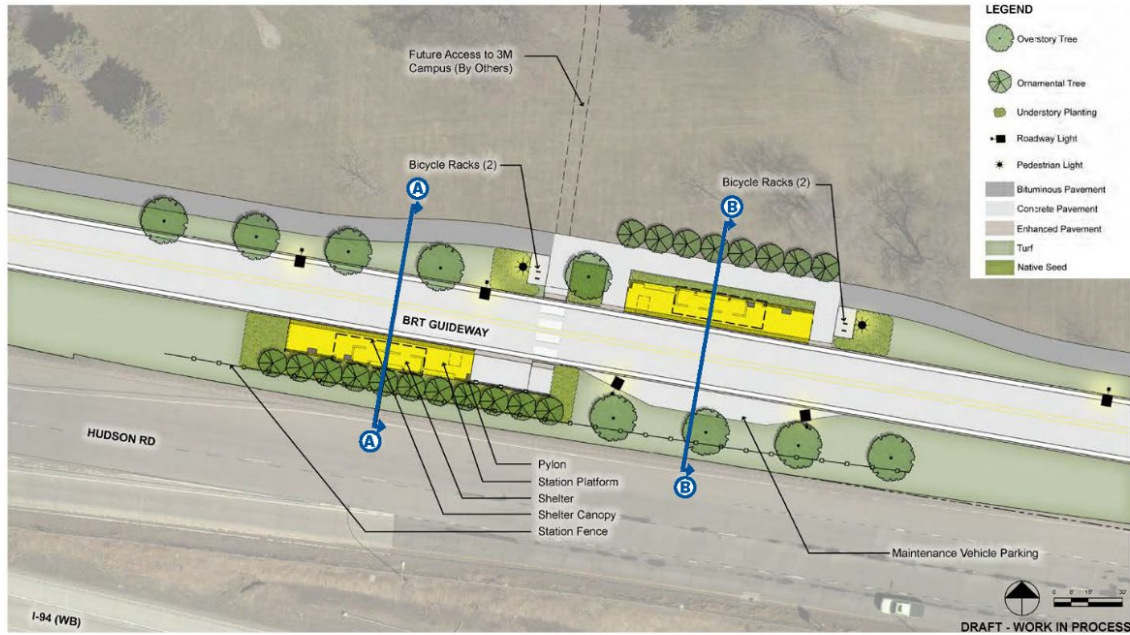
Maplewood Station



Marka xagga bariga loo kaco, waxaanu gaarnay ilaa xarunta Maplewood. Tani waa xarunta kaliya ee mashruucu ku leeyahay magaalada Maplewood, waxayna dhinaca ku heysaa 3M.

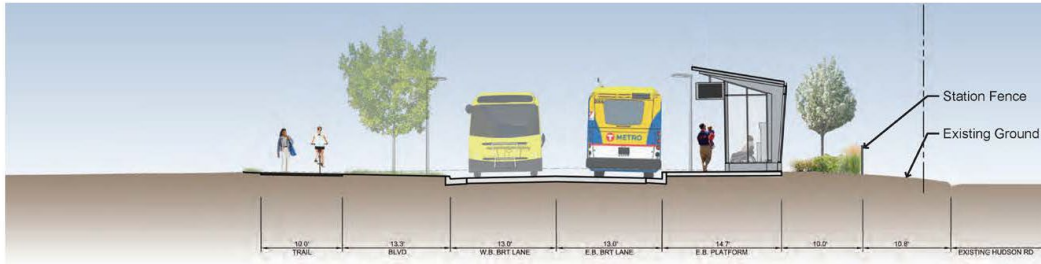
Waxa aad arki doontaan waddo lugeedyada cadcad ka soo bilowda dhinaca bariga oo gudaha u sii gala bariga, kuwaas oo ku xirma waddo waqooyi iyo koonfur ee xaafadaha Maplewood.

Maplewood Station Site Plan

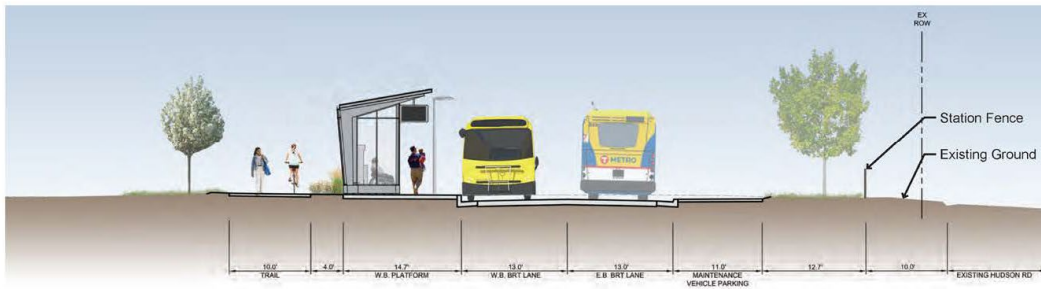


[Ma jirayo hadal; muusig la maqlayo. Faahfaahinta muuqaalka: Muuqaalkani wuxuu muujinayaa qorshaha goobta. Khadadka lagu calaamadeeyey A iyo B waa halka basasku ka talaabaan iyo khadadka lagu socdo (akhri muuqaalada soo socda).]

Maplewood Station Cross Sections A & B



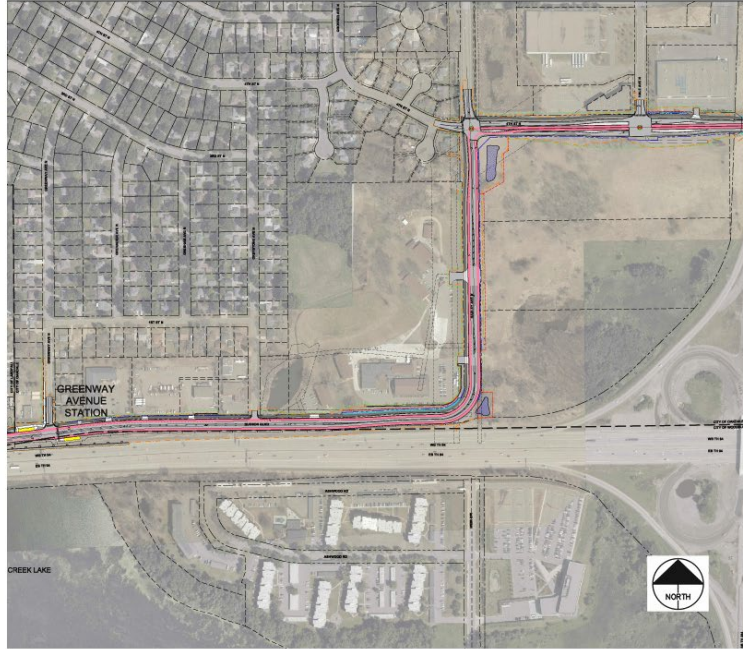
Section A-A: EB Platform (Looking East)



Section B-B: WB Platform (Looking East)

[Ma jirayo hadal; muusig la maqlayo. Faahfaahinta muuqaalka: Halkani waa halka basasku ka talaabaan iyada khadadka lagu socdo iyada oo lagu calaamadeeyey A iyo B Ee qorshaha goobta.]

Greenway Avenue Station



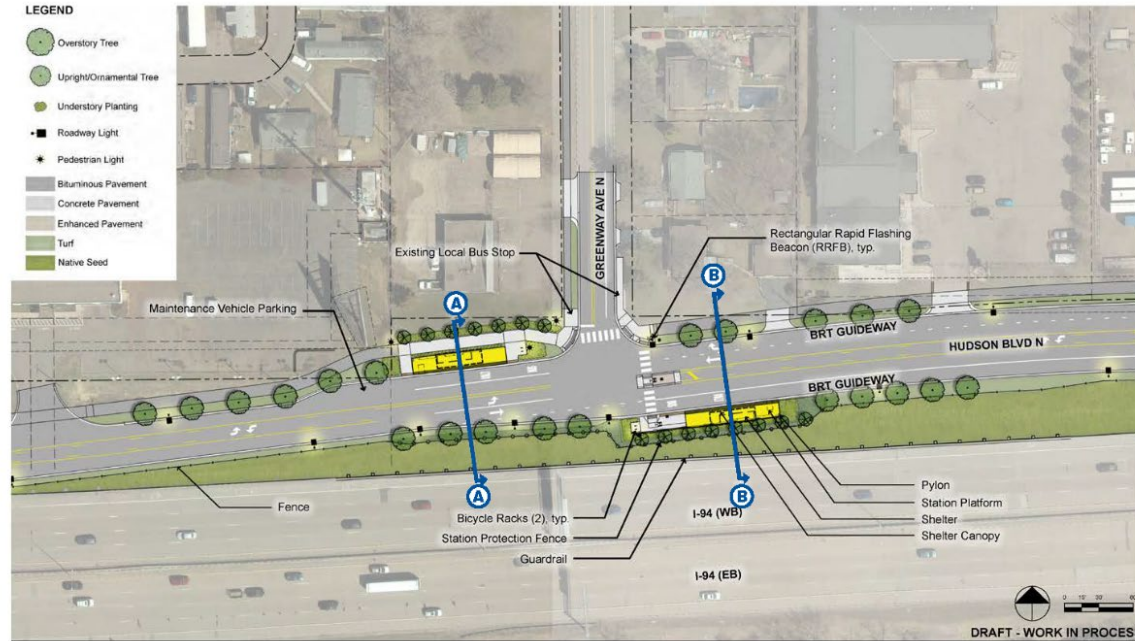
Iyaga oo sii socda, Khadka Gold Line weli waa mid gaarsiisan Wadada Hudson ilaa meel ku dhow Magaalada Landfall. Halkaas xarun ayaa laga dhisayaa Wadooyinka Hudson iyo Greenway. Waana halka ay ku taal magaalada Landfall.

Dhab ahaantii waxa ay xaruntani ku taalaa magaalada Oakdale, taasoo u adeegta labadaba Landfall iyo Oakdale. Halkan weeye halka aad ku arkeyso in khadku uu isku bedelayo dhinacyada wadooyinka.

Sidaa darteed, marka loo sii gudbo bariga, baska laba dhinac u socdaba waxa uu ku soconayaa dhinaca wadada (Shoulder). Marka la sii gaaro Oakdale, halkaas waa meesha uu basku dhaafu Wadada Hudson. Halkaas waa Wadada Hadley.

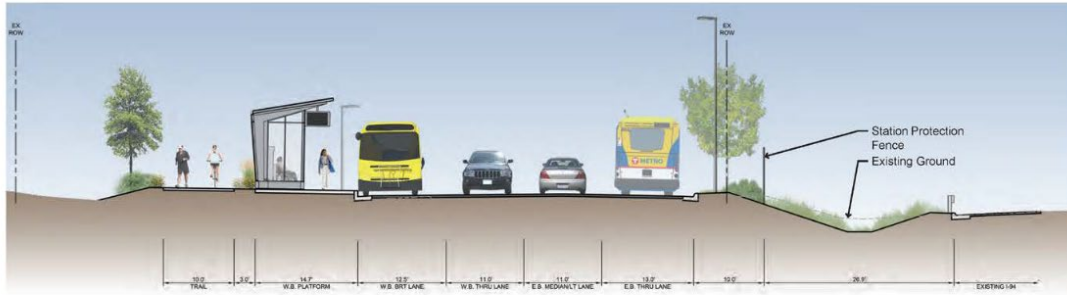
Isbedelka mashruucu waa marka aynu yareyno xawaaraha si leexashadu u noqoto mid amaan ah ee basaska iyo gaadiidka kale iyo dadka lugeynaya. Gold Line waxa uu u gudbayaa Wadada Hadley ka dibna Wadada 4aad, iyada oo halkani tahay wadada 4aad.

Greenway Avenue Station Site Plan

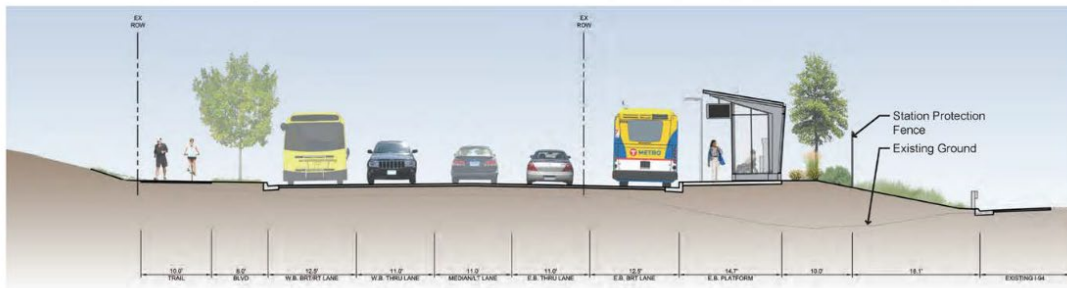


[Ma jirayo hadal; muusig la maqlayo. Faahfaahinta muuqaalka: Muuqaalkani wuxuu muujinayaa qorshaha goobta. Khadadka lagu calaamadeeyey A iyo B waa halka basasku ka talaabaan iyo khadadka lagu socdo (akhri muuqaalada soo socda).]

Greenway Avenue Station Cross Sections A & B



Section A-A: WB Platform (Looking East)

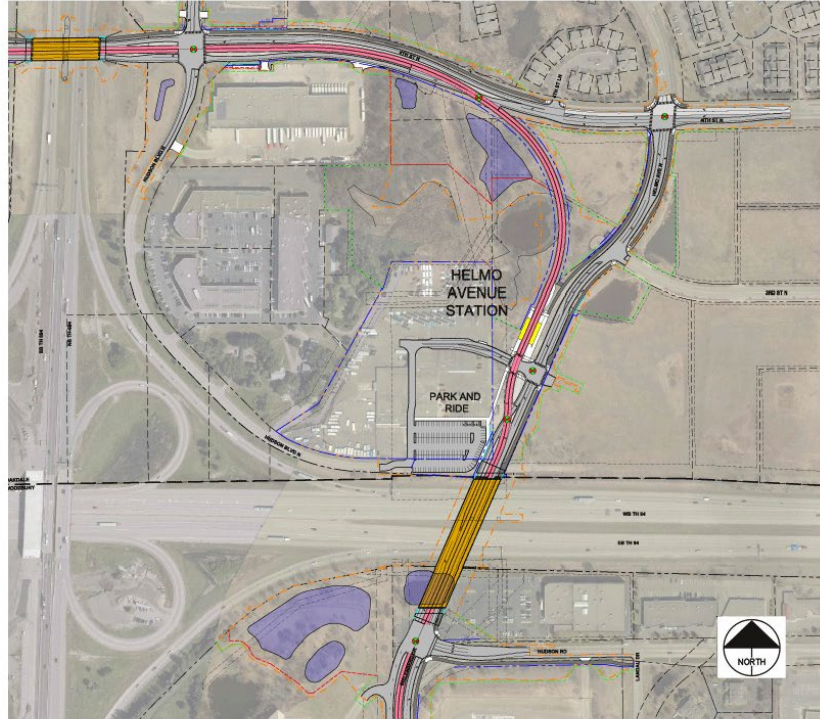


Section B-B: EB Platform (Looking East)

0 2.5 5 10
DRAFT - WORK IN PROCESS

[Ma jirayo hadal; muusig la maqlayo. Faahfaahinta muuqaalka: Halkani waa halka basasku ka talaabaan iyada khadadka lagu socdo iyada oo lagu calaamadeeyey A iyo B Ee qorshaha goobta.]

Helmo Avenue Station



Weli waxa aan ku suganahay Oakdale waxa aadna ku aragtaa halkan buundada Wadada 4aad, taasoo lagu bedelayo khad uu basku maro, khad gaadiidka kale ah, iyo sidoo kale wado lugeed dadka lugeynaya ah, Bushkuleetiyada maraan.

Waxaa aad arkeysaa khadka leh midabka basali xigeenka ah (pink) ama midabka salamon kaasoo barbar socda wadada sida ay maanta tahay. Sidaa darteed, waxa ay la soconaysaa Wadooyinka Hudson iyo Helmo ee Oakdale.

Halkaas oo laga dhisayo xarun laga raaco basaska ee Helmo. iyo sidoo kale goobta gaadiidka la dhigto ama laga raaco. Mashruucu waxa uu u gudbayaa isku xirka wadada.

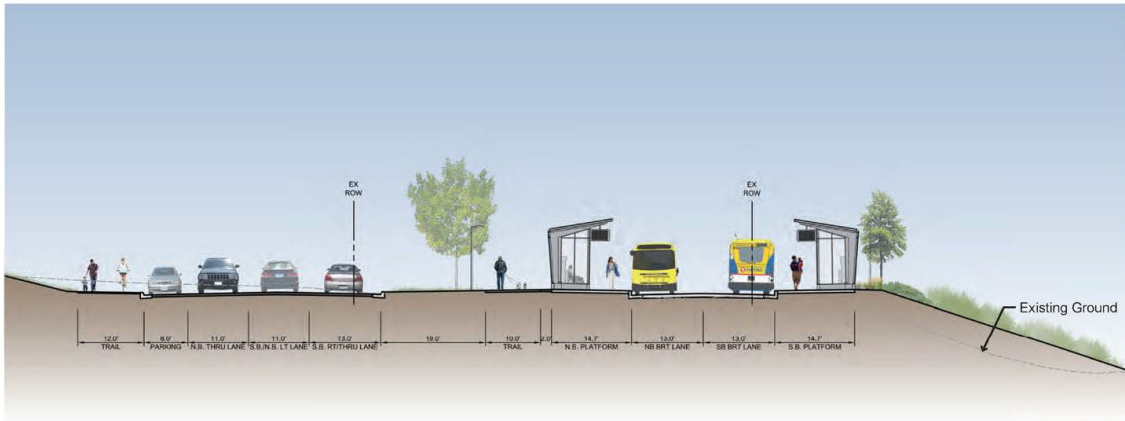
Tani waa buundo cusub oo ku xireysa Wadada Helmo. ee Oakdale ilaa Wadada Bielenberg ee Woodbury taasoo la mid ah buundada Wadada 4aad, Tani waxa ay noqoneysaa buundo cusub, waxayna sidoo kale yeelanaysaa khad baska oo kaliya loogu talo galay, khad gaadiidka kale ah, iyo sidoo kale wado lugeed.

Helmo Avenue Station Site Plan



[Ma jirayo hadal; muusig la maqlayo. Faahfaahinta muuqaalka: Muuqaalkani wuxuu muujinayaa qorshaha goobta. Halakni waa goobta basasku ka talaabaan iyo khadka ay maraan ee la socda khadka lagu calaamdeeyey A ee qorshaha goobta (akhri muuqaalada soo socda).]

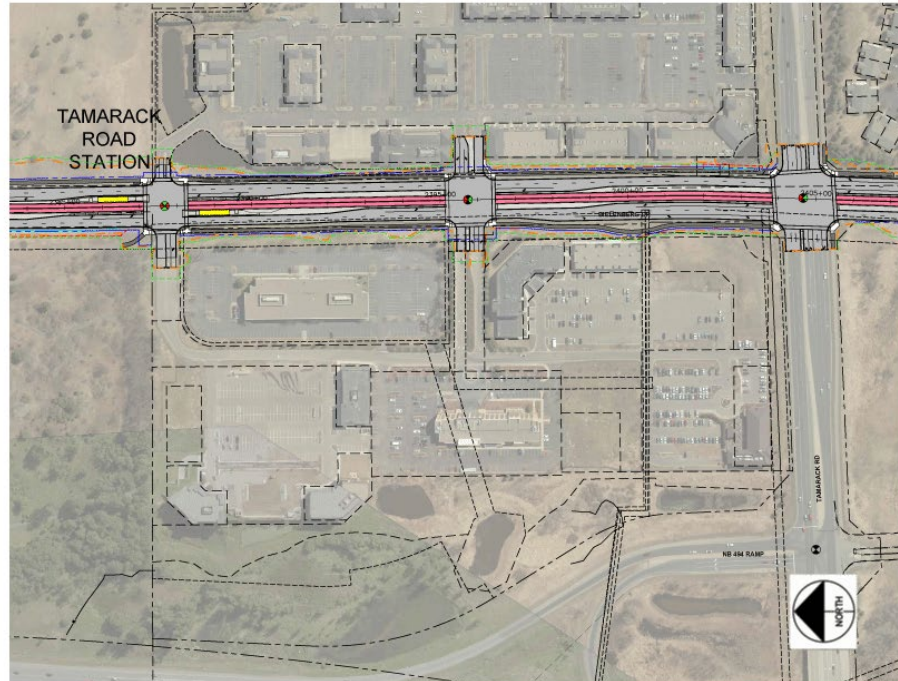
Helmo Avenue Station Cross Section A



Section A-A (Looking South)

[Ma jirayo hadal; muusig la maqlayo. Faahfaahinta muuqaalka: Halakni waa goobta basasku ka talaabaan iyo khadka ay maraan ee la socda khadka lagu calaamdeeyey A ee qorshaha goobta.]

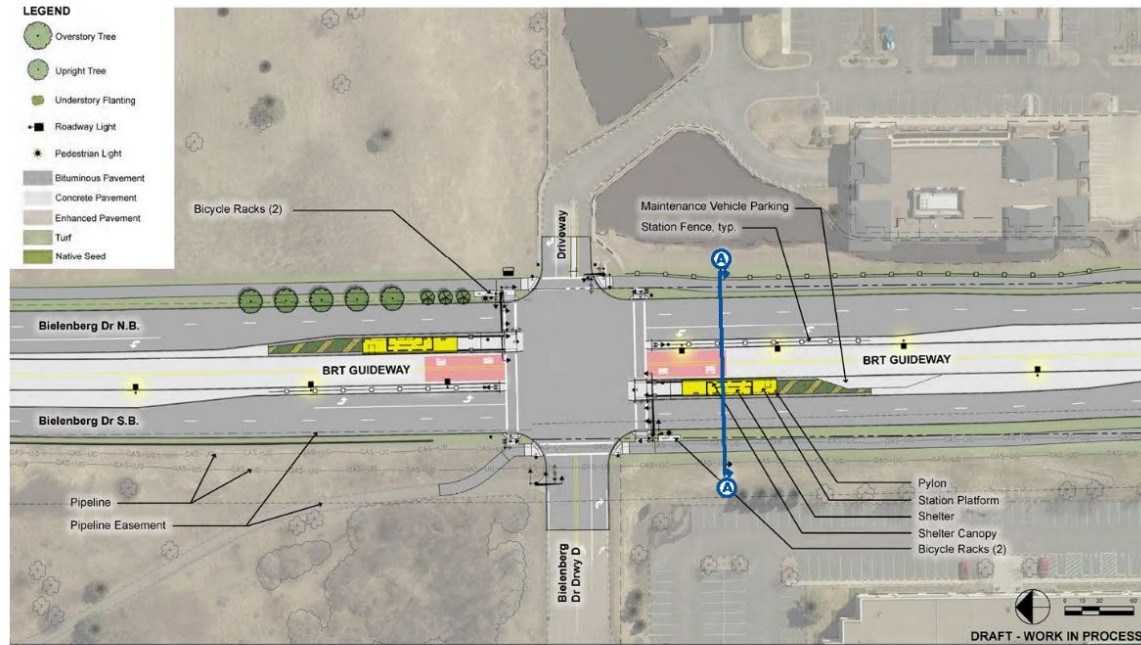
Tamarack Station



Xilligan la joogo, waxa ay isku xirtaa Okadale iyo Woodbury. Si Woodbury gudaha loogu galo, waxa aan gaarnaa ilaa xarunta Tamarack. Xaruntan, Wadada Tamarack ayaa inoo muuqata. Waa qeyb ka mid ah Tamarack.

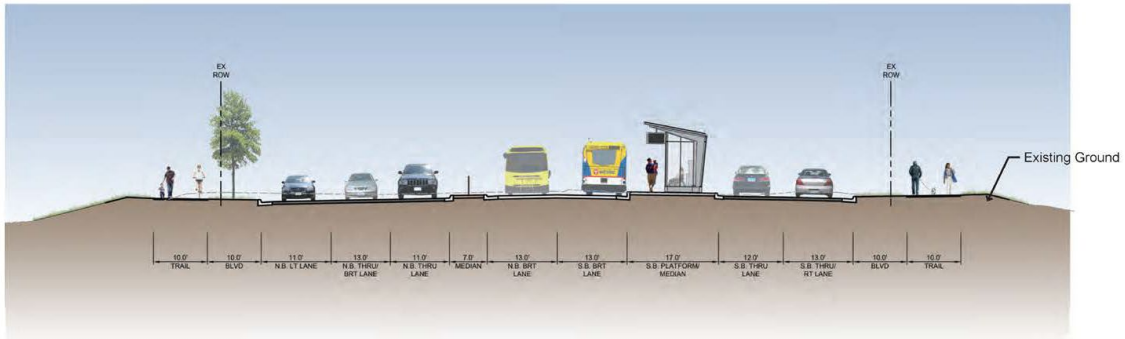
Laakiin waa dhinaca Bielenberg una dhow Tamarack Hills. Goobaha dukaamada iyo goobaha kale ee ganacsiga ee degaankaas, waxaadna ku arkeysaa khadka midabka basali xigeenka ah (pink) ee bartamaha wadada. Basaska waxa ay hoos u raacayaan wadada Bielenberg.

Tamarack Station Site Plan



[Ma jirayo hadal; muusig la maqlayo. Faahfaahinta muuqaalka: Muuqaalkani wuxuu muujinayaa qorshaha goobta. Halakni waa goobta basasku ka talaabaan iyo khadka ay maraan ee la socda khadka lagu calaamdeeyey A ee qorshaha goobta (akhri muuqaalada soo socda).]

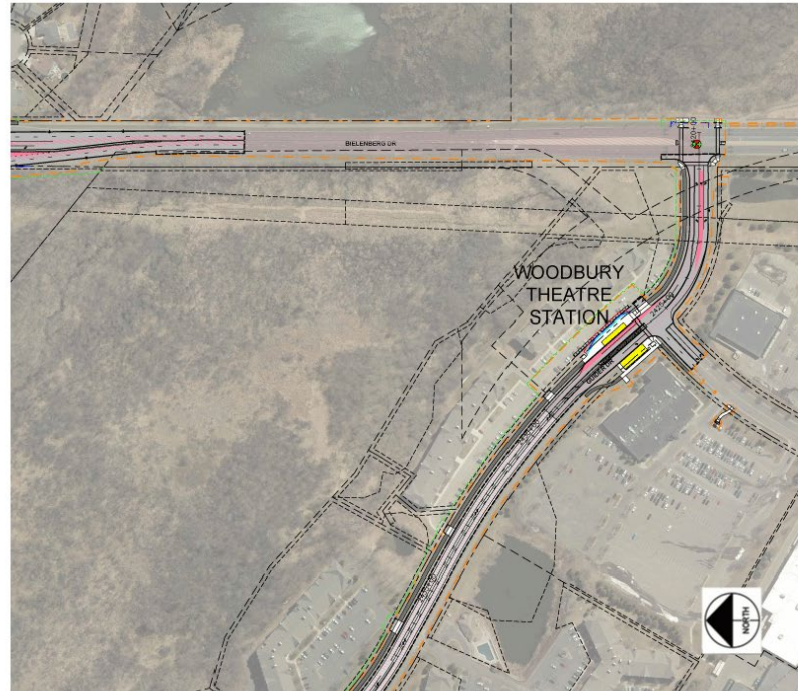
Tamarack Station Cross Section A



Section A-A (Looking South)

[Ma jirayo hadal; muusig la maqlayo. Faahfaahinta muuqaalka: Halakni waa goobta basasku ka talaabaan iyo khadka ay maraan ee la socda khadka lagu calaamdeeyey A ee qorshaha goobta.]

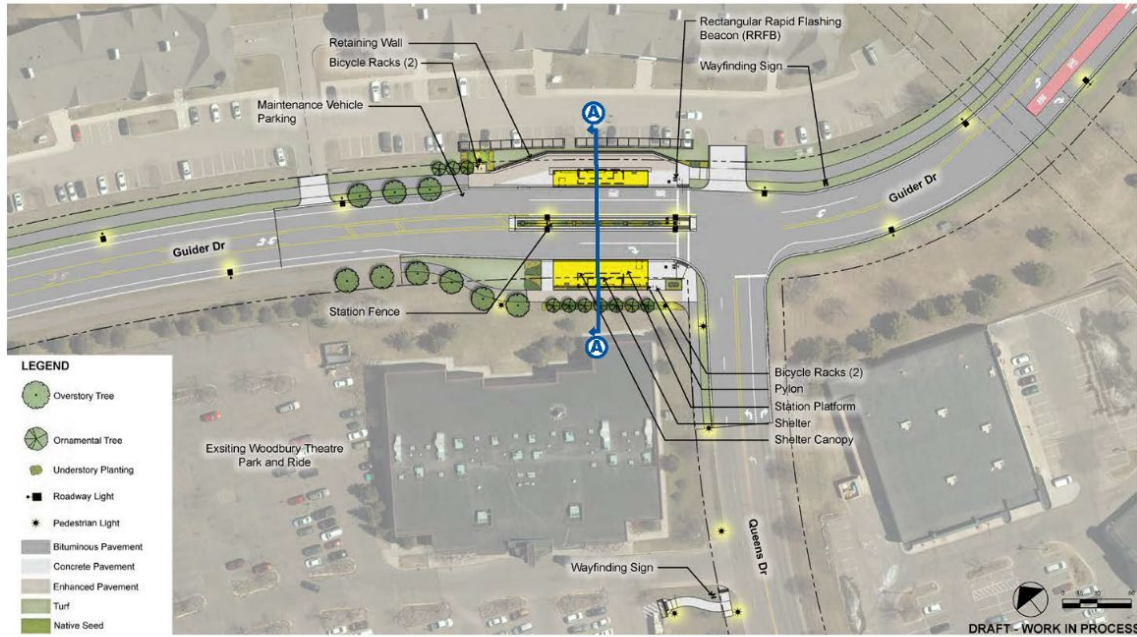
Woodbury Theatre Station



Iyaga oo dhex maraya Woodbury, basasku kuma socdaan khad u gaar ah, sidaa darteed looma sameynayo waddo u gaar ah basaska halkan. Taasoo Keydka Dabeecadda ee Tamarack.

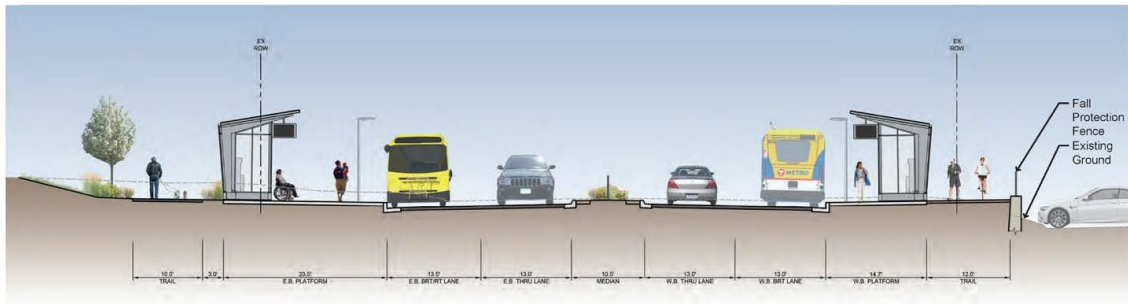
Basku waxa uu marayaa wadada caadiga ah halkan, kaasoo u socda Wadada Guider ilaa Tiyaatarka Woodbury. Khadka Gold Line xarun ayuu ku leeyahay Guider, dhinaca hore ee Tiyaatarka Woodbury. Ma aha in aan gaareyno goobta la dhigto oo la iska dhaafayo halka iminka gaadiidka la dhigto lagana raaco. Gold Line waxa uu hoos u raacayaa Wadada Guider ee dhamaadka khadka ee Woodbury.

Woodbury Theatre Station Site Plan



[Ma jirayo hadal; muusig la maqlayo. Faahfaahinta muuqaalka: Muuqaalkani wuxuu muujinayaa qorshaha goobta. Halakni waa goobta basasku ka talaabaan iyo khadka ay maraan ee la socda khadka lagu calaamdeeyey A ee qorshaha goobta (akhri muuqaalada soo socda).]

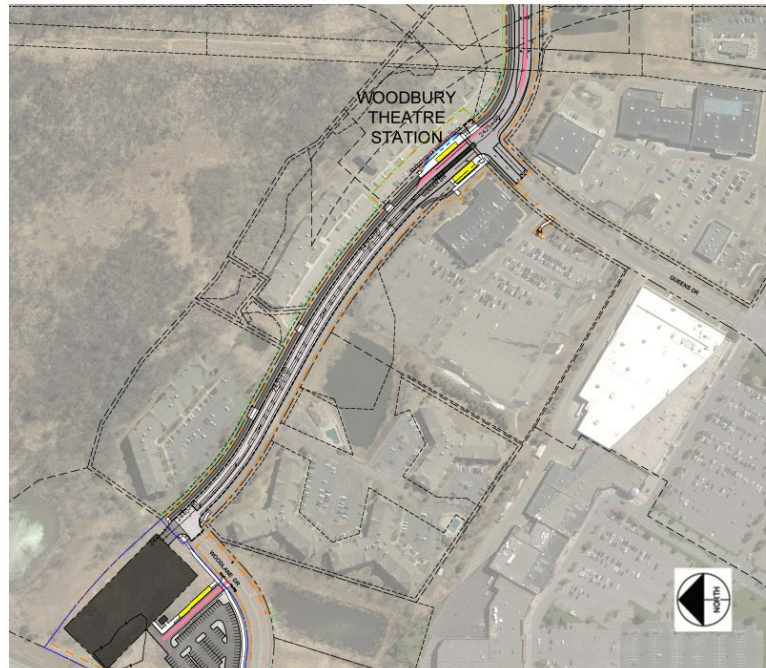
Woodbury Theatre Station Cross Section A



Section A-A (Looking West)

[Ma jirayo hadal; muusig la maqlayo. Faahfaahinta muuqaalka: Halakni waa goobta basasku ka talaabaan iyo khadka ay maraan ee la socda khadka lagu calaamdeeyey A ee qorshaha goobta.]

**Woodbury 494
Park & Ride Station**



Halkaas oo laga dhisayo goob gaadiidka la dhigto lagana raaco. Isbedelka Mashruuca ee 15% ee aan ku dareyno waxaa ka mid ah inaga oo balaarineyna goobta gadiidka la dhigto oo laga raaco si loo dhigan karo gawaari dheeraad ah.


Si ay ula saanqado khadka Gold Line.

East Side Saint Paul and Suburban Station Illustration




[Ma jirayo hadal; muusig la maqlayo. Faahfaahinta muuqaalka: Halkan waxaa ku xusan tusaale muujinaya sida uu ekaanayo muuqaalka dibadda ee faras magaalaha St. Paul.]

Website

 www.metrotransit.org/gold-line

Phone

 651-602-1955

Email


 goldline@metrotransit.org

Social Media

 **Twitter:** @GoldLineBRT

 **Facebook:** @MetroTransitMN

Community Outreach Coordinator

 **Liz Jones**
elizabeth.jones@metrotransit.org
651-602-1977



▲ BRT in bus-only lanes

▼ Example of a station



Fadlan igala soo xiriir macluumaadkayga ku qoran bogga ugu dambeeya ee bandhigan si aad ula socotaan macluumaadka ugu dambeeya ee mashruuca. Fadlan ila soo xiriir haddii aad qabtaan wax faalo ah ama su'aal ah.

Waana ku mahadsan tihiin in aad daawateen bandhigan.