



60% Design Presentation
October 8, 2020



Nthuav Tawm 60% Kev Txhim Kho

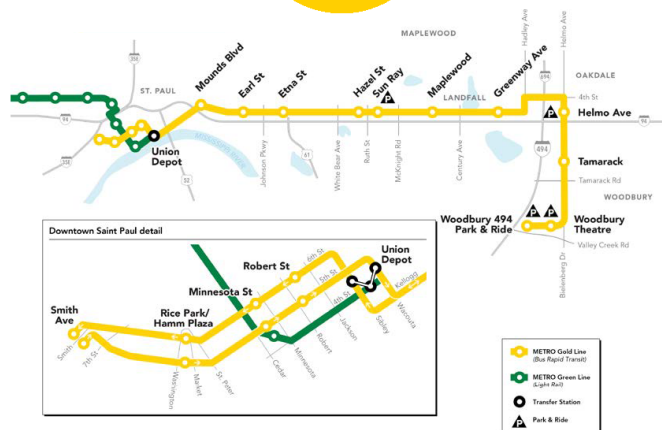
Vis dis aus ntawv ntw ua lus Hmoob

A new transit line that will connect the East Metro and Saint Paul

Ten-mile route through Saint Paul, Maplewood, Landfall, Oakdale and Woodbury

Twenty-one new stations between downtown Saint Paul and Woodbury

Bus-only lanes constructed north of I-94



Nyob zoo. Kuv lub npe hu ua Liz Jones thiab kuv yog tus Thawj Tuaj Cuag Zej Zog rau METRO Gold Line Bus Rapid Transit Project thiab kuv yuav qhia txog cov kev txhim kho tshiab npaj kho txhij li ntawm 30%.

Ces tam sim no kuv yuav muab kuv lub kooj thaj tua kom peb thaj li saib txoj kev nthuav no.

Ua li, yuav kom peb pib tau mas, Kuv tsuas xav qhia mentsis saib txoj kev txhim kho no yog dab tsi tiag. Ces txoj kev Gold Line kev txhim kho no yog los kho txoj kev tsheb npav siv. Uas yuav pib ntawm plawv nroog Saint Paul mus rau sab Hnub Tuaj ntawm nroog Saint Paul thiab Maplewood, Landfall, Oakdale, thiab Woodbury. Peb yuav khiav tshab cov nroog no nrog rau cov zej zog ntawm Ramsey thiab Washington.

Peb yuav tsim, tag rho ntu kev deb ntawm txoj kev Gold Line mas deb li ntawm 10 miles.

Peb yuav tsim kho li ntawm 21 lub chav nce tsheb npav tshiab thiab txoj kev Gold Line yuav txawv mentsis yog piv rau lwm txoj kev caij tsheb npav, lwm txoj kev tsheb npav siv, vim hais tias peb tsuas siv cov tsheb npav nkaus xwb. Txoj dej num no yuav npaj siab pib txhim kho thaj tsam li thaum xyoo 2022, thiab pib siv tau rau thaum xyoo 2024.

Minnesota's first Bus Rapid Transit (BRT) line that will operate primarily within exclusive bus-only lanes

- Specialized buses
- Frequent service: All-day; 10-15 min service
- Operates seven days a week
- Limited stops
- Pay before you board
- Uses bus-only lanes
- More green light time
- Stations with improved features



▲ BRT in bus-only lanes

Tsam koj tsis cuab tsis tim txog kev caij tsheb npav, nws kuj txawv mentsis yog piv rau cov tsheb npav uas niaj hnuv siv tam sim no.

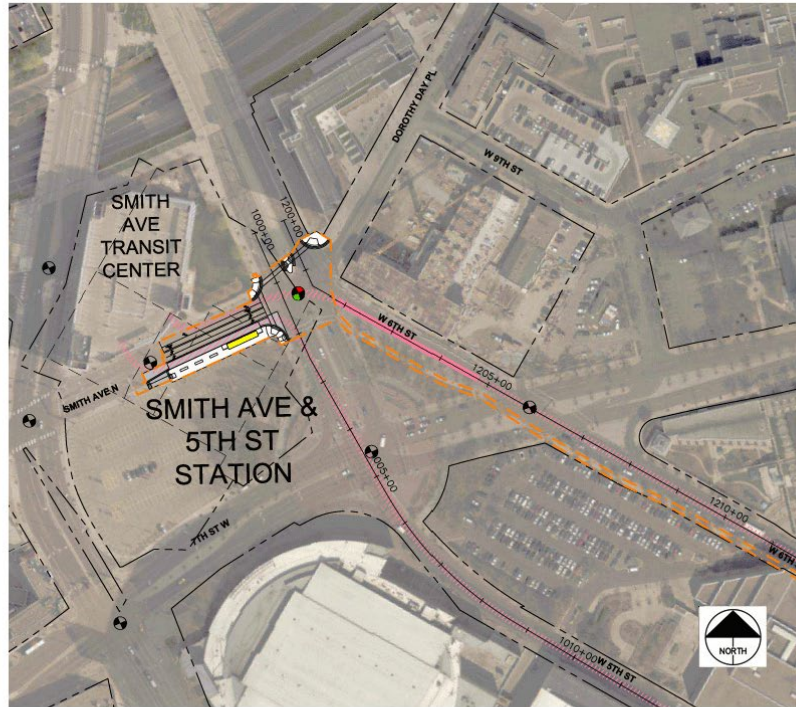
Yog li no, tam sim no Metro Transit muaj ob peb txoj kev caij tsheb npav uas siv cov kev luv fais, yog txoj kev A line.

thiab txoj kev C line, li qhov kuv hais, txoj kev Gold Line, yuav siv lawv cov kev nkaus nkaus xwb.

Ces kom ua kev mus los tau yooj yim tshaj cov tsheb npav uas twb muaj niaj hnuv siv lawm.

Ces cov tsheb npav kuj yuav zoo txawv zog. Ces lawv zoo li cov tsheb ciav hlau uas siv cov kev luv fais, koj them ua ntej koj mam nce mus caij tsheb, Yuav muaj tsheb thauj neeg ntau dua, thiab cov chaw nce tsheb npav muaj ntau yam siv tshaj li cov chaw nce tsheb npav uas niaj hnuv siv. ces kom ua kev mus los tau yooj yim tshaj, ceev tshaj, muaj ntau txoj kev siv tshaj.

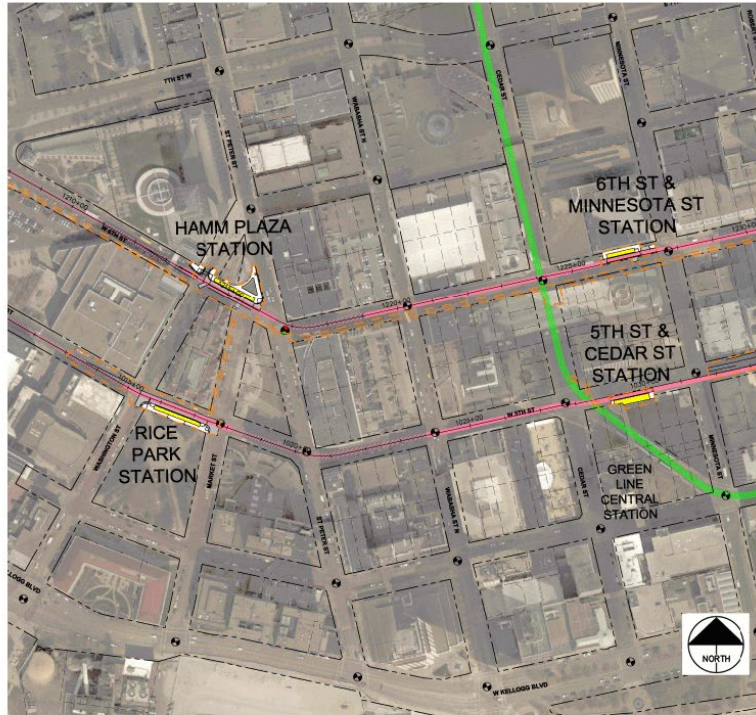
Smith Avenue & 5th Street Station



Ces, yuav pib hauv plawv nroog Saint Paul. Lub hauv paus ntawm txoj kev Gold Line yuav pib ntawm txoj kev Smith Avenue Transit Center, uas nyob ntawm sab xis ntawm lub tuam tsev Xcel Energy Center.

Thiab txoj kev Gold Line yuav dhia mus rau txoj kev 5th thiab 6th Streets. Ces cov kev ntawv yuav yog kev (one-ways) lawm xwb.

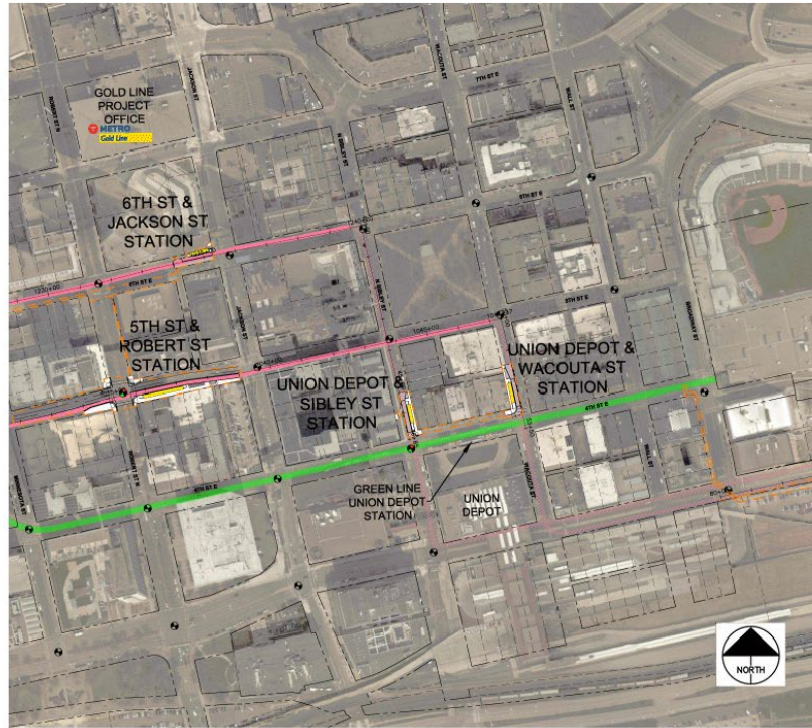
Rice Park/Hamm Plaza Stations and 5th Street & Cedar Street/6th Street & Minnesota Street Stations



Ces yuav muaj chaw nce tsheb npav nyob ntawm 6th Street thiab Hamm Plaza thiab ntawm 5th Street thiab Rice Park Chaw nce tsheb.

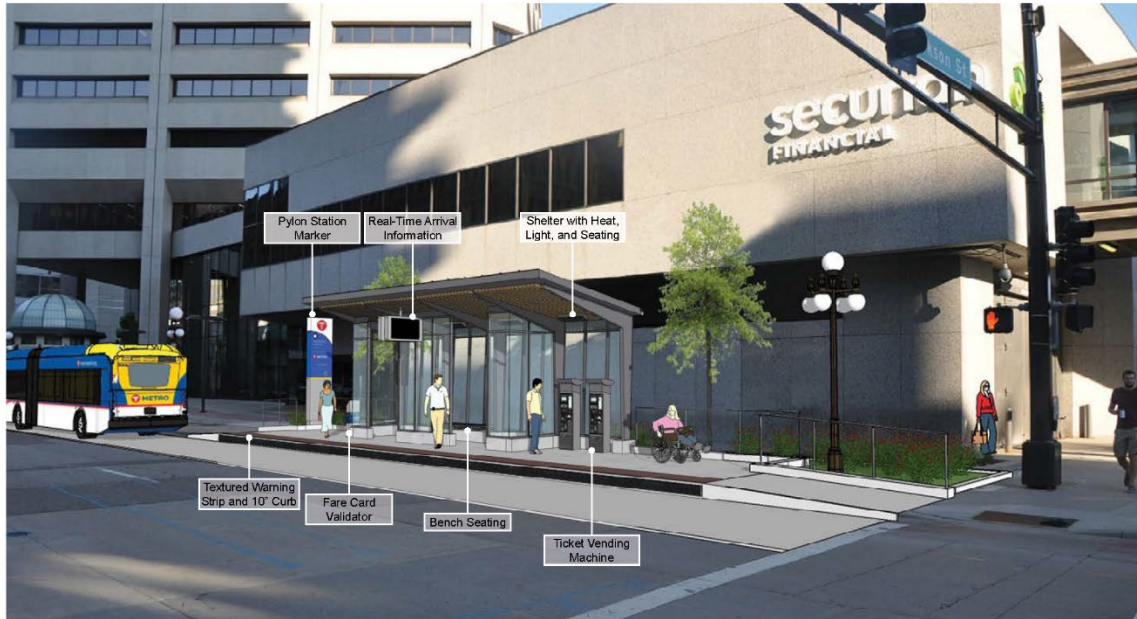
Ces, cov uas nyob ze ntawm Landmark Center, plawv nroog Saint Paul. Yuav muaj cov chaw nce tsheb npav nyob ntawm Minnesota Street, thiab Robert Street

5th Street & Robert Street/6th Street & Jackson Street Stations and Union Depot Stations: 4th Street & Sibley Street/Wacouta Street



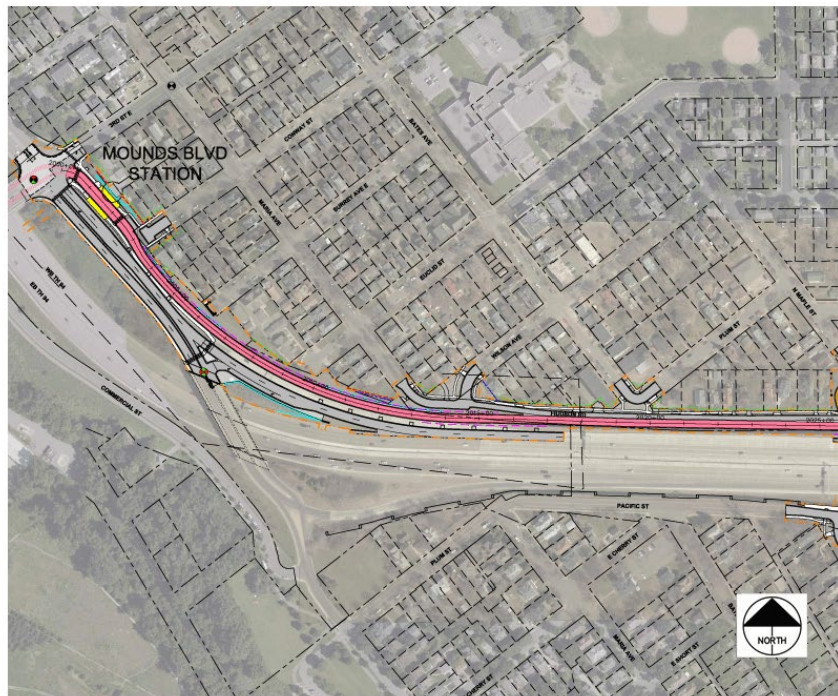
Thiab lub chaw nce tsheb npav kawg ua ntej tawm hauv plawv nroog Saint Paul yuav nyob zee ntawm Union Depot, nyob ntawm 4th Street thiab Sibley thiab 4th thiab Wacouta.

Downtown Saint Paul Station Illustration



[Tsis muaj lus sib tham; tso nkauj mloog. Qhia txog daim duab slide: Nov yog tus qauv uas cov chav nce tsheb npav nyob hauv plawv nroog St. Paul yuav zoo li cas.]

Mounds Boulevard Station



Txoj kev Gold Line yuav mus rau ntawm tus choj Kellogg Bridge hla mus rau sab Hnub Tuaj ntawm nroog Saint Paul mus rau Mounds Boulevard, qhov chaw uas peb yuav muaj ib qhov chaw nce tsheb npav ntawm txoj kev Kellogg ua ntej txoj kev Kellogg hloov ua kev Third thiab Mounds Boulevard.

Koj yuav pom hais tias muaj xim paj yeej, muaj tsis zoo li xim ntawm tus ntes (salmon), cov kav no yog siv rau cov tsheb npav nkaus xwb uas koj yuav pom nyob ntawm ntug plawv nroog. Pev yuav tsis tsim kho kev tsheb npav tshiab rau hauv plawv nroog Saint Paul.

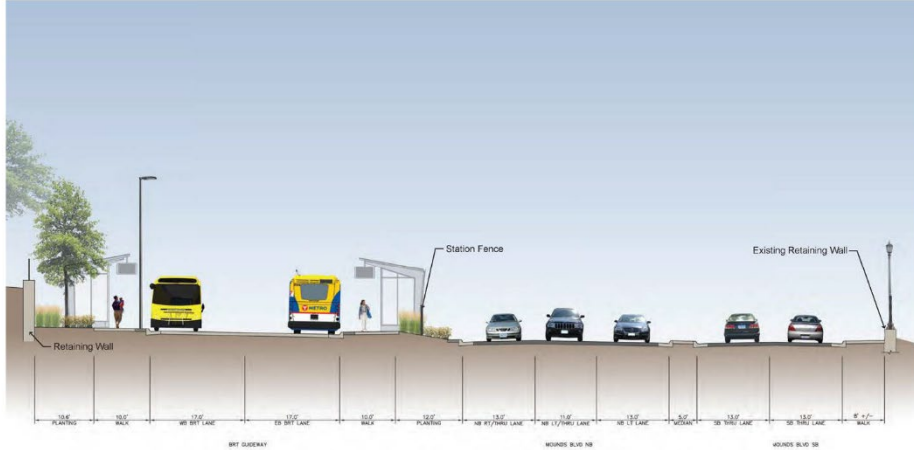
Ces cov kev xim paj yeeb ntawv yog cov kev siv rau cov tsheb npav nkaus ntawm txoj kev Mounds Boulevard Mus rau ntawm cov tsev nyob ibn cig ntawm Dayton's Bluff.

Mounds Boulevard Station Site Plan

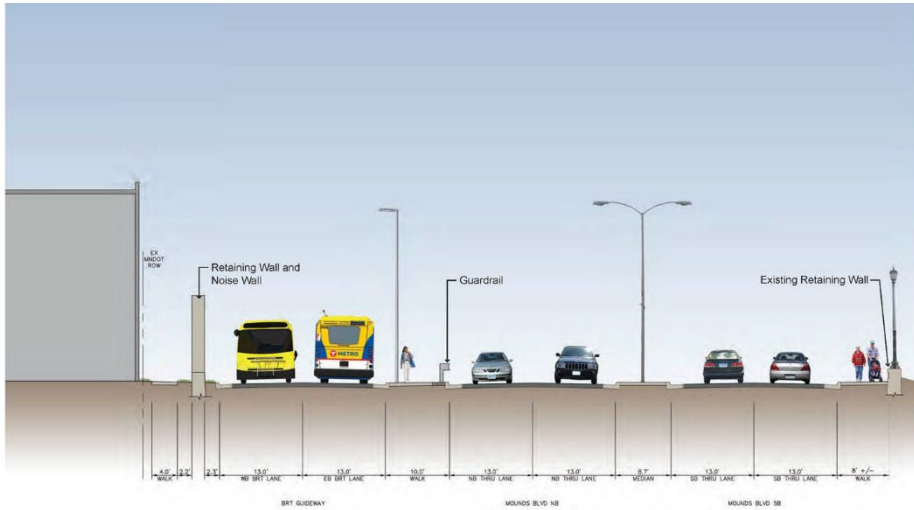


[Tsis muaj lus sib tham; tso nkauj mloog. Qhia txog daim duab slide: Daim duab no pom cheeb tsam txhim kho chav nce tsheb npav nyob ntawm Mounds Boulevard Station. Cov kev no yuav muaj tis npe hu ua A thiab C yog sau rau hauv plawv ntawm cov ntu kev tsheb npav thiab tsheb taug (saib ntawm cov duab slides hauv qab no).]

Mounds Boulevard Station
Cross Section A

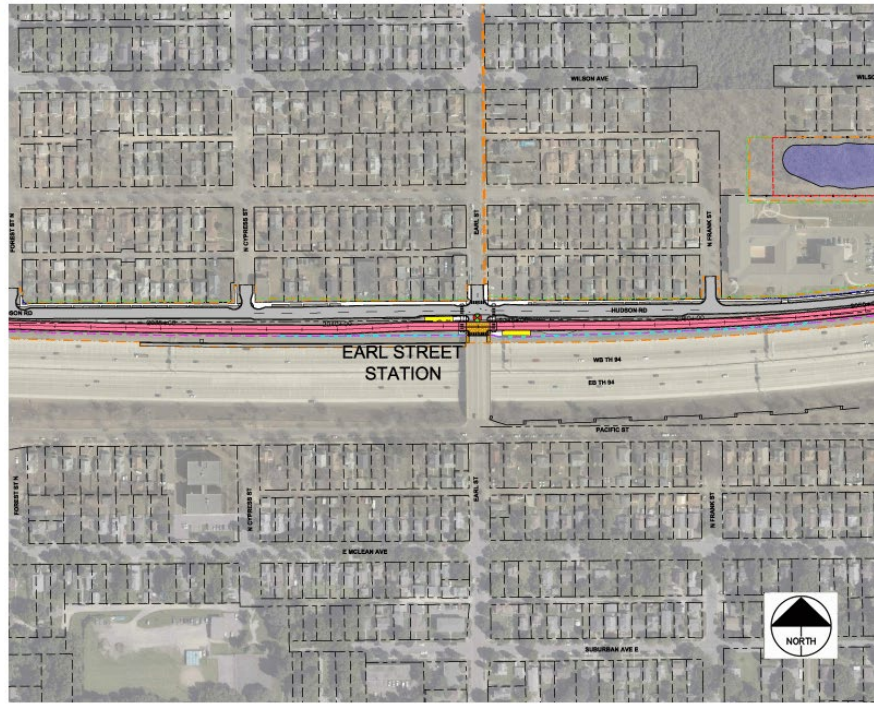


Mounds Boulevard Station
Cross Section C



[Tsis muaj lus sib tham; tso nkauj mloog. Qhia txog daim duab slide: Cov nov yog cov ntu kev tsheb npav thiab tsheb taug es raws li tau khij ntawm txoj kab A thiab C ntawm qhov chaw yuav npaj tsim chaw nce npav.]

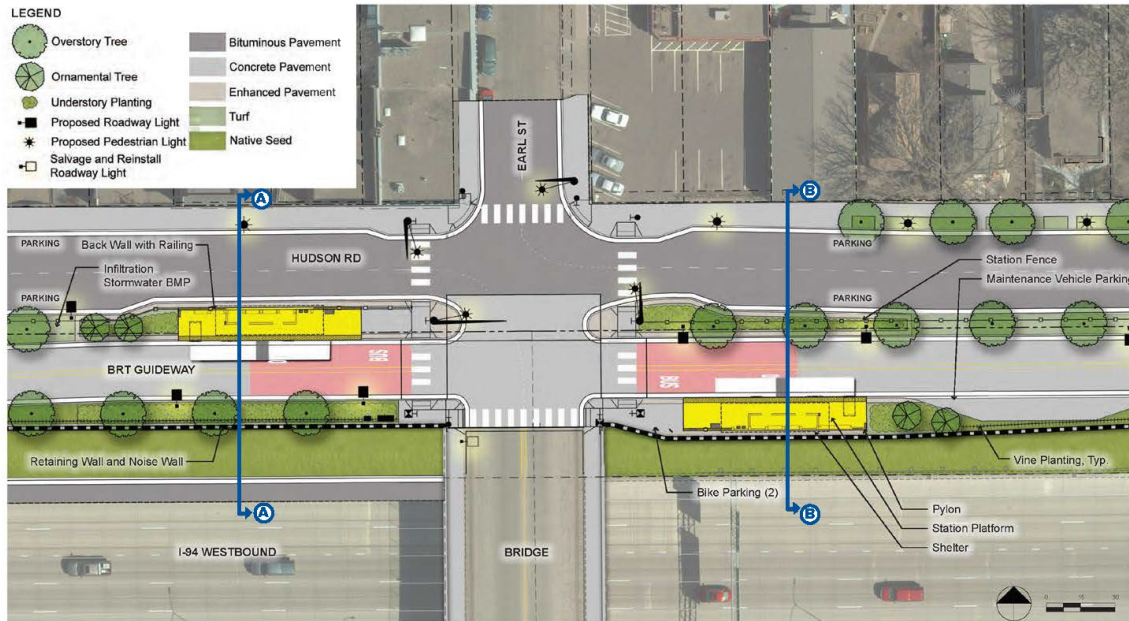
Earl Street Station



Ces yuav mus deb zog rau sab hnuv tuaj, peb yuav muaj chaw nce tsheb npav nyob ntawm Hudson Road thiab Earl Street. Ces nov yog kev hloov los ntawm peb txoj ekv txhim kho 15%.

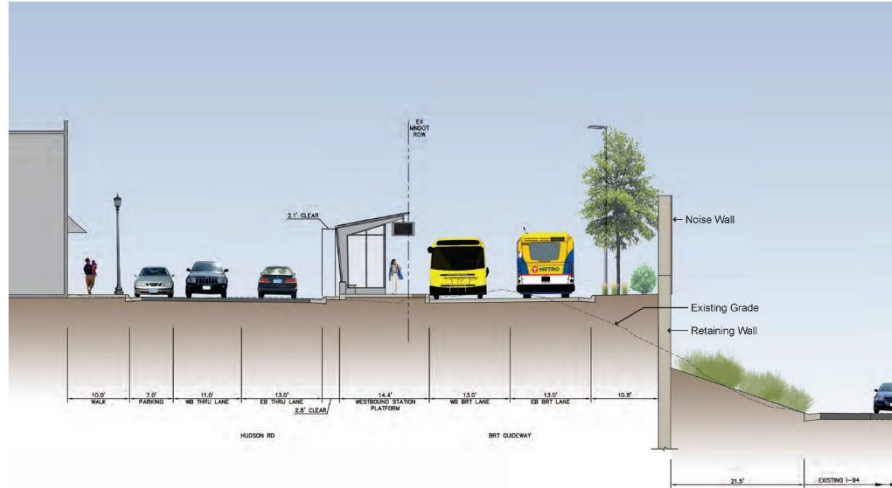
Peb yuav muaj txoj kev mus thiab los nyob rau ntu kev Cyprus thiab Frank Street thiab peb qhov kev txhim kho 15% Yuav pom hais tias yog txoj kev (one-way) xwb, Tab sis peb kuj ua tau chaw dav mentsis kom muaj kev mus thiab los tswj xeeb rau cov tsheb me.

Earl Street Station Site Plan

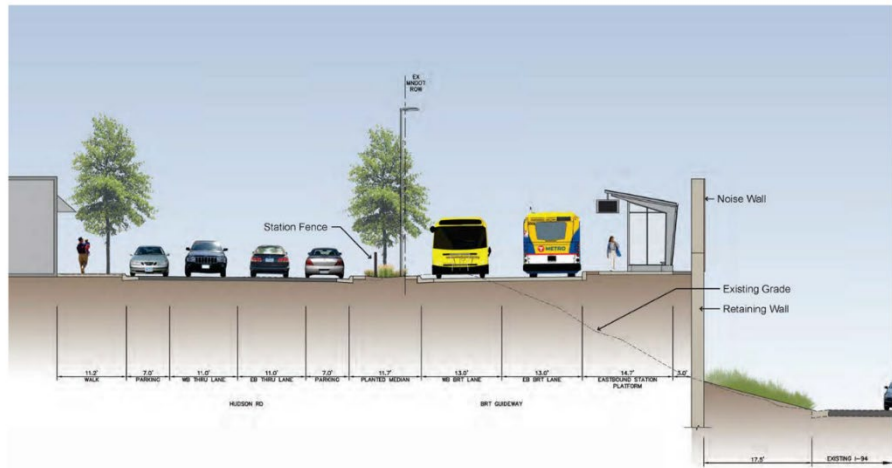


[Tsis muaj lus sib tham; tso nkauj mloog. Qhia txog daim duab slide: Daim duab no pom cheeb tsam txhim kho chav nce tsheb npav nyob. Cov kev no yuav muaj tis npe hu ua A thiab B yog sau rau hauv plawv ntawm cov ntu kev tsheb npav thiab tsheb taug (saib ntawm cov duab slides hauv qab no).]

**Earl Street Station
Cross Section A**

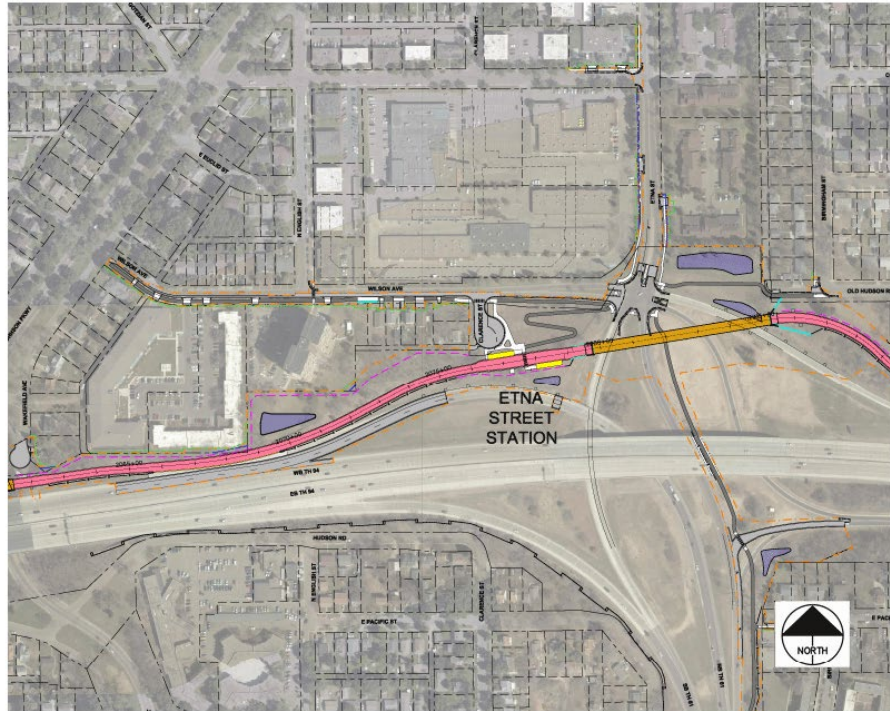


**Earl Street Station
Cross Section B**



[Tsis muaj lus sib tham; tso nkauj mloog. Qhia txog daim duab slide: Cov nov yog cov ntu kev tsheb npav thiab tsheb taug es raws li tau khij ntawm txoj kab A thiab B ntawm qhov chaw yuav npaj tsim chaw nce npav.]

Etna Street Station



Mus deb zog rau, sab hnuv tuaj. Txoj kev txhim kho no yuav muaj ib qhov chaw nce tsheb npav ze txoj kev Etna Street.

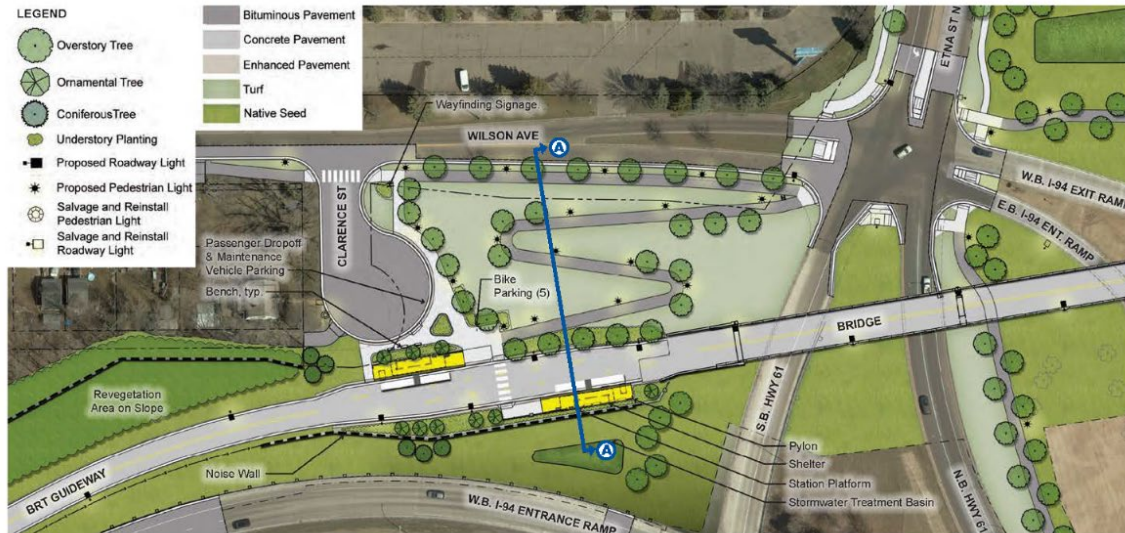
Ces txoj ekv no yuav txawv kiag li lawm, tsis zoo li txoj kev nyob ntawm tam sim no. Ces nov yog txoj kev loj Highway 61 sib tshuam. Txoj kev Wilson yog txoj kev ntawm no.

Nyob ntawm qhov no peb yuav muaj ib qhov chaw nce tsheb npav thiab.

Muaj tej co kev hloov los ntawm kev txhim kho 15% uas peb ntxiv ib cov kev rau neeg taug, ib cov kev rau caij tsheb kauj vab thiab cov kev sib txuas nrog rau cov kab dawb ntawm no thiab peb kuj kho cov kev kom mus txog cov chaw nce tsheb npav los ntawm txoj ekv saum no nrog cov kev neeg taug kom mus txog tau zoo zog thiab txhim kho kom taug kev tau kaj siab zog mus rau ntawm chaw nce tsheb npav.

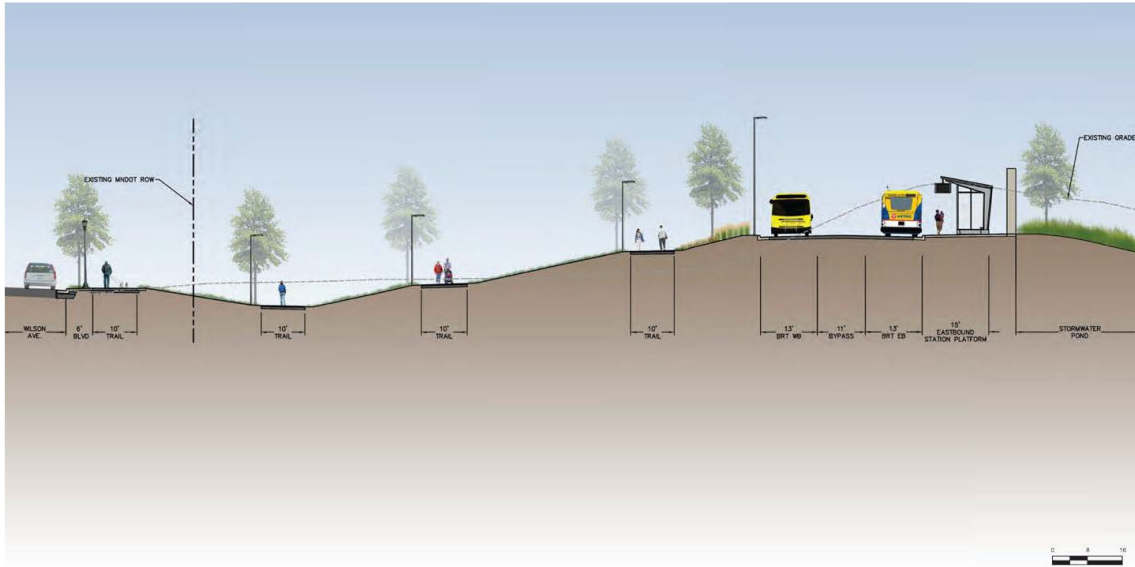
Txoj kev Gold Line yuav hla choj dhau txoj kev loj Highway 61 kev tshuam kom cov tsheb npav tsis txhob sib txhij nrog rau cov kev luv fais. Ces, tag nrho qhov chaw no yog cov kev rau cov tsheb npav siv nkaus xwb thiab nov yog tus choj uas tsheb npav siv nkaus xwb.

Etna Street Station Site Plan



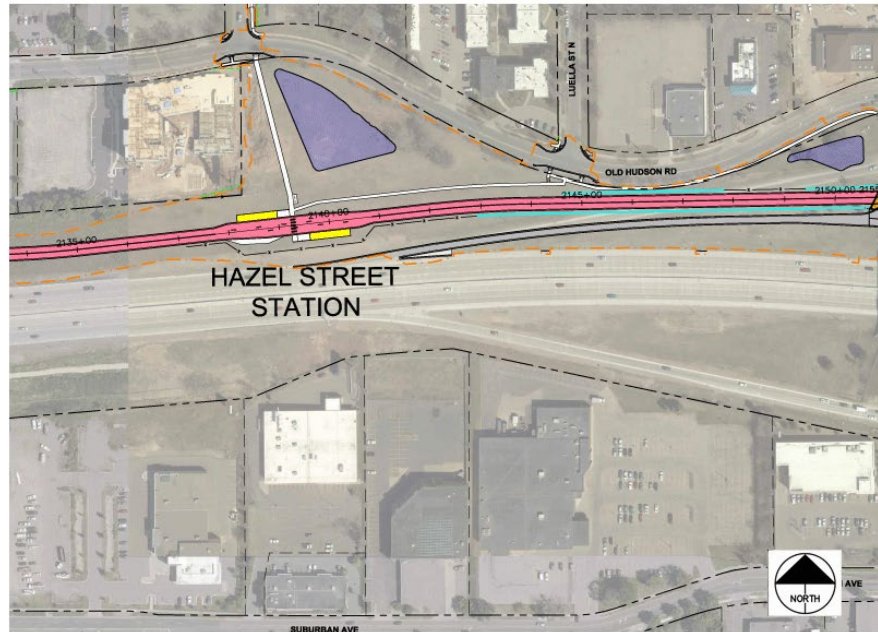
[Tsis muaj lus sib tham; tso nkauj mloog. Qhia txog daim duab slide: Daim duab no pom cheeb tsam txhim kho chav nce tsheb npav nyob. Txoj kab tis npe A yog kev si tshuam ntawm cov tsheb thiab tsheb npav.(saib ntawm cov duab slides hauv qab no).]

Etna Street Station Cross Section A



[Tsis muaj lus sib tham; tso nkauj mloog. Qhia txog daim duab slide: Nov yog cov kev sib tshuam ntawm cov tsheb thiab tsheb npav, raws li tau khij ntawm txoj kab A ntawm daim ntawv yauv npaj tsim chaw nce npav.]

Hazel Street Station



Mus deb yog rau sab hnuv tuaj mus txog chav nce tsheb npav ntawm txoj kev Hazel Street Station thiab qhov chaw nce tsheb npav no yog lub qauv uas tsuas yog cov tsheb npav siv nkaus xwb thiab kem ntawm cov kev luv fais.

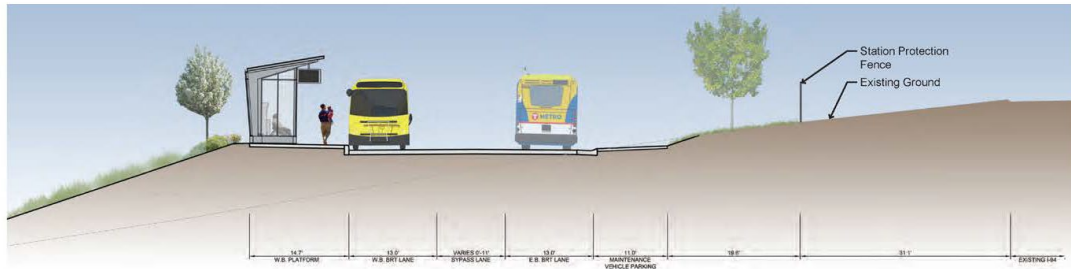
Ces, txoj kev Old Hudson Road nyob saum no, thiab cov kev rau cov tsheb npav siv nyob nram qab cov tsev ntau yim nyob no. Thiab yuav kev rau neeg taug Mus kom txog cov chaw nce tsheb npav thiab.

Hazel Street Station Site Plan

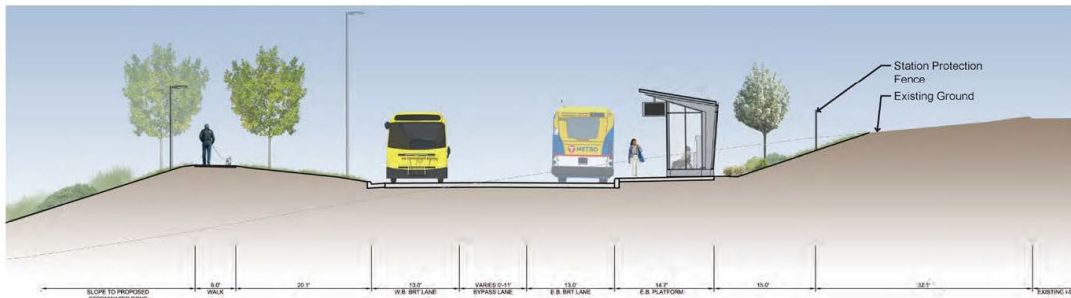


[Tsis muaj lus sib tham; tso nkauj mloog. Qhia txog daim duab slide: Daim duab no pom cheeb tsam txhim kho chav nce tsheb npav nyob. Cov kev no yuav muaj tis npe hu ua A thiab B yog sau rau hauv plawv ntawm cov ntu kev tsheb npav thiab tsheb taug (saib ntawm cov duab slides hauv qab no).]

Hazel Street Station Cross Sections A & B



Section A-A: W.B. Platform (Looking East)

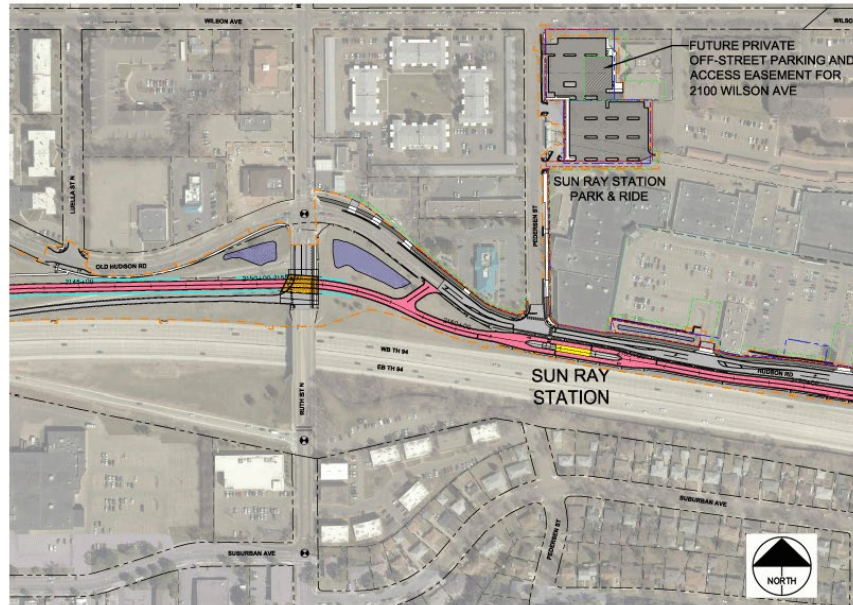


Section B-B: E.B. Platform (Looking East)

0 2.5 5 10 DRAFT - WORK IN PROCESS

[Tsis muaj lus sib tham; tso nkauj mloog. Qhia txog daim duab slide: Cov kev no yuav muaj tis npe hu ua A thiab B yog sau rau hauv plawv ntawm cov ntu kev tsheb npav thiab tsheb taug.]

Sun Ray Station



Ua li, thiab tam sim peb nkag mus rau hauv cheeb tsam Sun Ray. Peb yuav muaj ib chav nce tsheb npav nyob rau ntawm Sun Ray. Koj yuav pom nram qab no, muaj xim kab ntxwv, xim daj, muaj ib qho choj me me, qhov nov qhia hais tias muaj kev nkag hauv qab, ces txoj kev Gold Line yuav mus hauv qab ntawm txoj kev Ruth thiab White Bear Avenues tib si kom tsis txhob ntsib cov tsheb me thiab cheeb tsam ntawv.

Ob txoj kev no mas ntxhab heev, tab tsis txoj kev Gold Line yuav mus hauv qab White Bear Avenue thiab Ruth Street thiab yuav muaj chaw nce tsheb npav rau ntawm Sun Ray, koj yuav pom hais tias muaj ntsis txawv yog piv rau lwm qhov chaw nce tsheb npav uas muaj ob qhov chaw nce tsheb. Qhov chaw nce tsheb no yog qhov hloov mus rov qab.

Ces cov tsheb npab yuav nkag mus los sab twg los tau thiab tig must so cov neeg caji tsheb npav nqis thiab nce. Ces zoo li muaj ob qhov chaw nce tsheb ntawm ib thaj chaw, peb txhim kho yam siv qhov chaw me me uas peb muaj. Peb tsis xav cuam tshuam Sun Ray cov av pev. Ces peb muaj cov kaib khw muag khoom Sun Ray Shopping Center, nrog rau Sun Ray Transit Center uas tseem nyob li qub nrog rau qhov chaw nres thiab nce tsheb tshiab uas tseem yuav txhim kho.

Sun Ray Station Park & Ride Site Plan



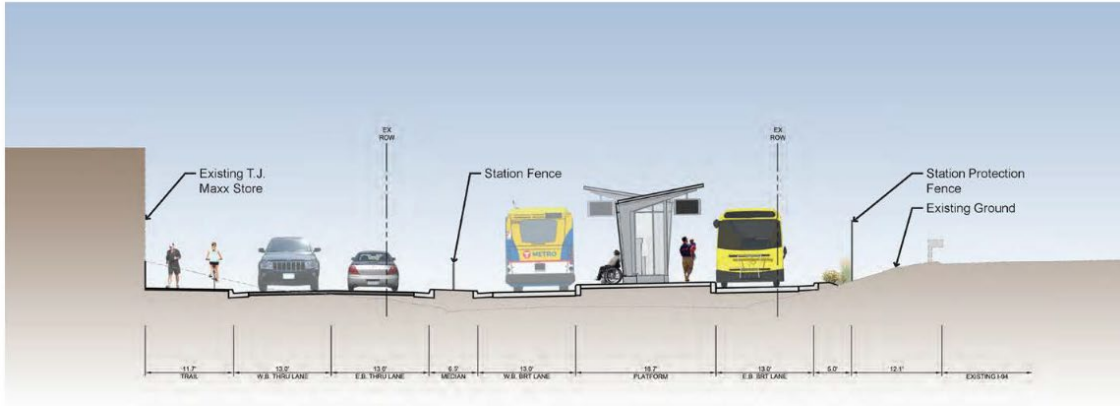
Ces txawm hais tias qhov chaw no me heev, peb kuj tseem txhim kho qhov chaw nce tsheb npav no tau. Koj yuav pom tias ntxiv cov kev rau neeg taug kom pej xeem taug tau kev mus rau cov cheeb tsam no, cov chaw ua si Conway Park, Sun Ray Chav Nyeem Ntawv, thiab mus deb zog rau sab hnuv tuaj kom mus txog cov lwm cov chaw nce tsheb npav ntxiv.

Sun Ray Station Site Plan



[Tsis muaj lus sib tham; tso nkauj mloog. Qhia txog daim duab slide: Daim duab no pom cheeb tsam txhim kho chav nce tsheb npav nyob. Txoj kab tis npe A yog kev si tshuam ntawm cov tsheb thiab tsheb npav.(saib ntawm cov duab slides hauv qab no).]

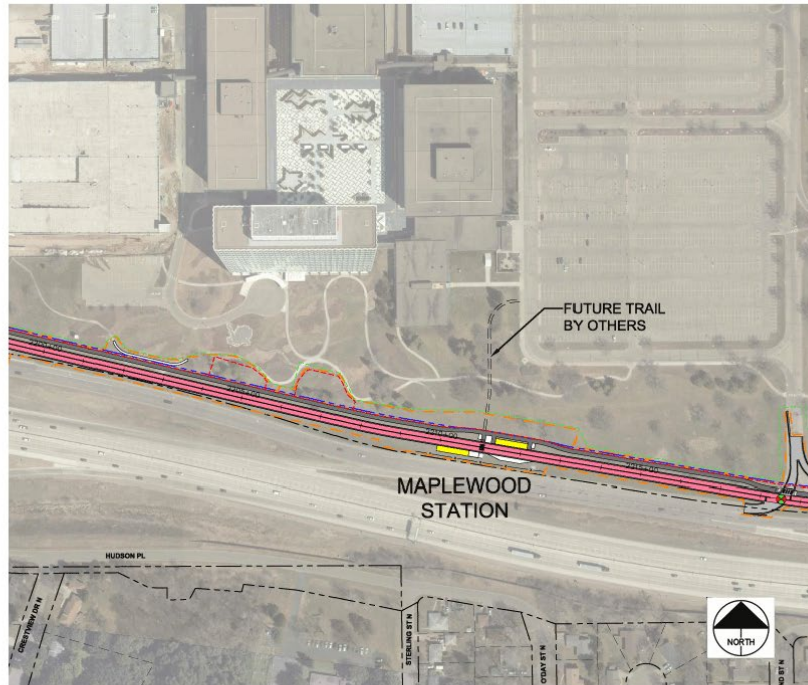
Sun Ray Station Cross Section A



Section A-A: Looking East

[Tsis muaj lus sib tham; tso nkauj mloog. Qhia txog daim duab slide: Nov yog cov kev sib tshuam ntawm cov tshab thiab tshab npav, raws li tau khij ntawm txoj kab A ntawm daim ntawv yauv npaj tsim chaw nce npav.]

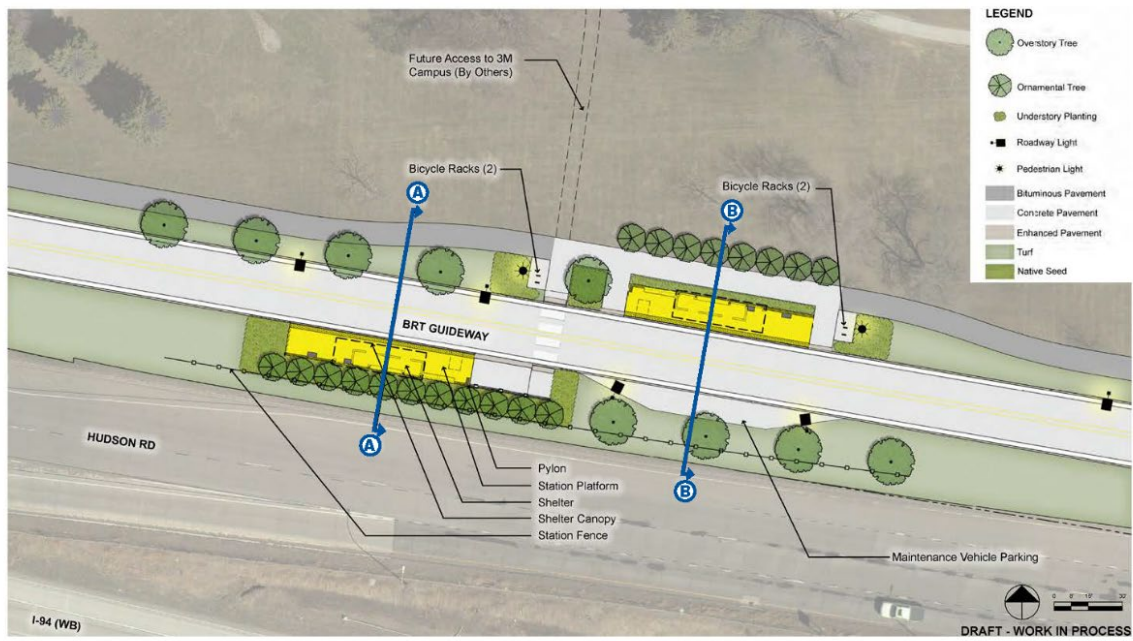
Maplewood Station



Mus deb yog rau sab hnuv tuaj mus txog, peb mus txog Chav nce tshab npav pem Maplewood. Thiab nov yog tib lub chaw nce tshab npav uas nyob hauv lub nroog Maplewood, thiab nws nyob kiag ntawm lub tuam tsev ua hauj lwm 3M.

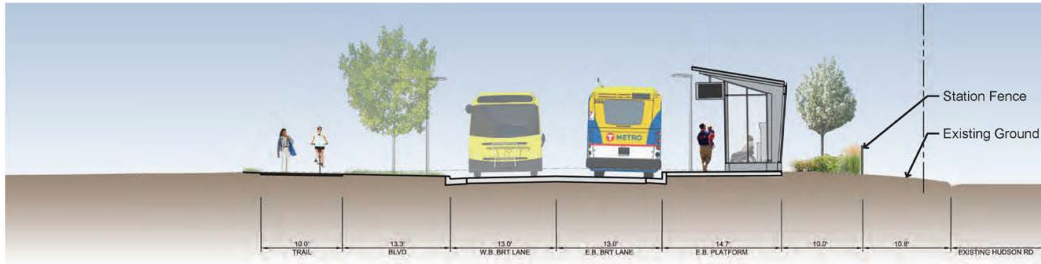
Koj yeej tseem yuav pom cov kab dawb rau neeg taug kev pib puag nram sab hnuv tuaj thiab yuav mus tauj deb heev ntawm sab hnuv tuaj ntxiv, thiaj kuj muaj kev neeg taug tuaj ntawm sab qaum teb thiab sab qab teb mentsis ntawm cov tsev nyob lub nroog Maplewood.

Maplewood Station Site Plan

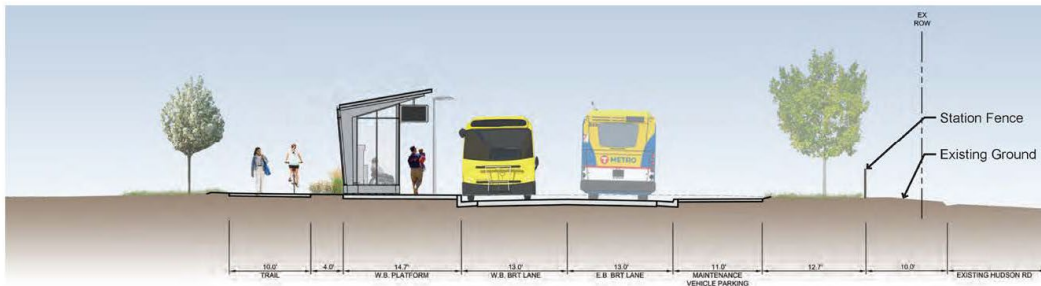


[Tsis muaj lus sib tham; tso nkauj mloog. Qhia txog daim duab slide: Daim duab no pom cheeb tsam txhim kho chav nce tsheb npav nyob. Cov kev no yuav muaj tis npe hu ua A thiab B yog sau rau hauv plawv ntawm cov ntu kev tsheb npav thiab tsheb taug (saib ntawm cov duab slides hauv qab no).]

Maplewood Station Cross Sections A & B



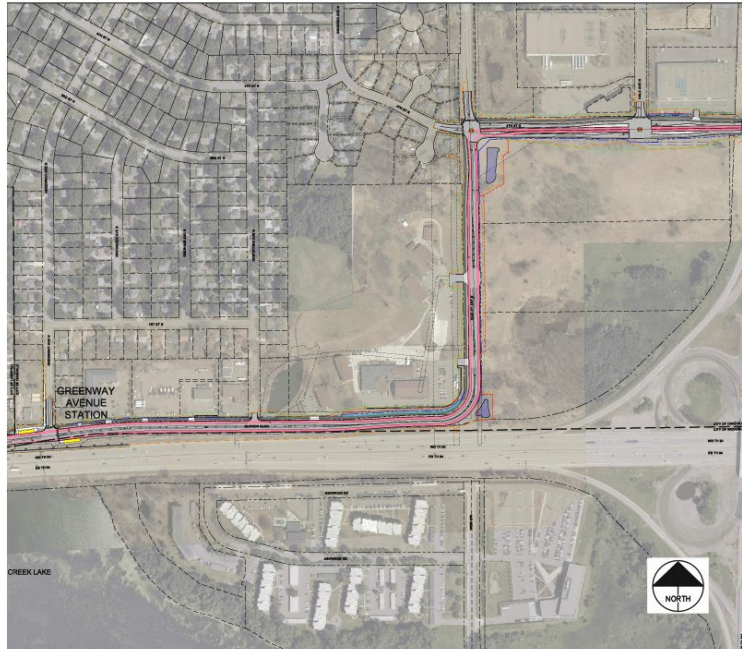
Section A-A: EB Platform (Looking East)



Section B-B: WB Platform (Looking East)

[Tsis muaj lus sib tham; tso nkauj mloog. Qhia txog daim duab slide: Cov kev no yuav muaj tis npe hu ua A thiab B yog sau rau hauv plawv ntawm cov ntu kev tsheb npav thiab tsheb taug.]

Greenway Avenue Station



Txuas ntxiv mus, txoj kev Gold Line tseem yuav siv raws txoj kev Hudson Road thiab nkag mus ze rau lub nroog Landfall. Ces peb yuav muaj ib chav nce tsheb npav nyob ntawm txoj kev Hudson Road thiab Greenway Avenue.

Ces lub nroog Landfall nyob ntawm no. Thiab lub chaw nce tsheb npav no nyob kiag rau ntawm lub nroog Oakdale, ces pab tau lub nroog Landfall thiab Oakdale tib si.

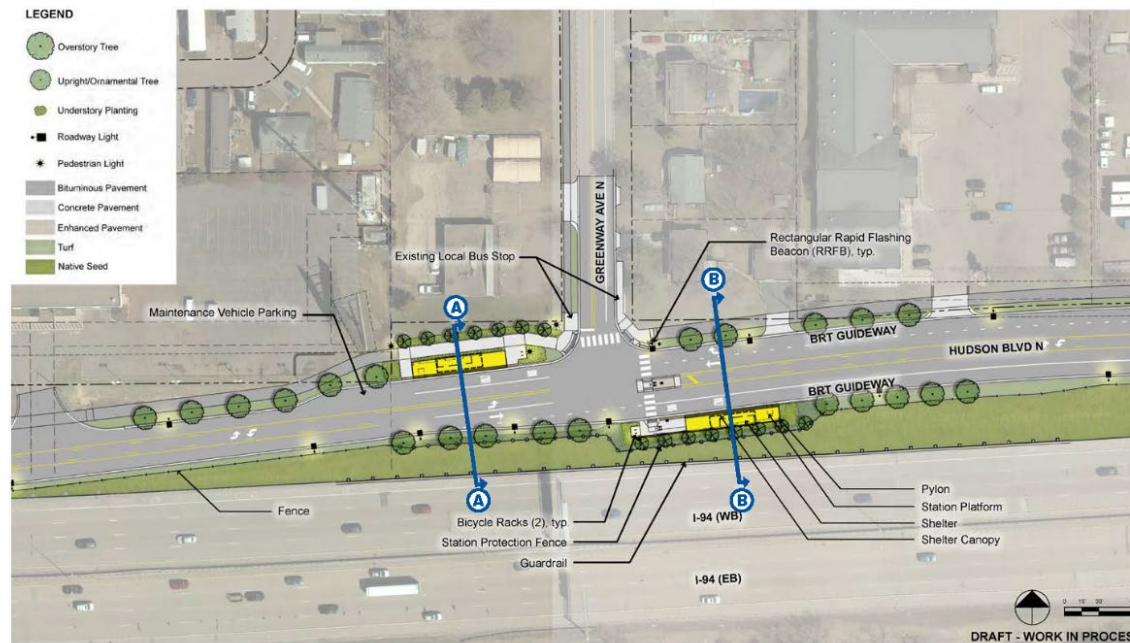
Thaj chaw no koj yuav pom hais tias cov kev rau tsheb npav siv yuav hloov sab twg los tau ntawm txoj kev. Ces, mus deb yog rau sab hnub tuaj, lub tsheb npav yuav mus thiab los mas siv sab ntug ntawm txoj kev luv fais.

Mus tob zog rau hauv lub nroog Oakdale, qhov no yog qhov uas lub tsheb npav mus dhau txoj kev Hudson Road. Ces, nov yog txoj kev Hadley Avenue.

Qhov hloov mas peb txo kom khiav qeeb mentsis thiab txhim kho txoj kev khaus no kom sib yam muaj kev nyab xeeb zog rau cov tsheb npav thiab rau cov tsheb thiab cov neeg taug kev.

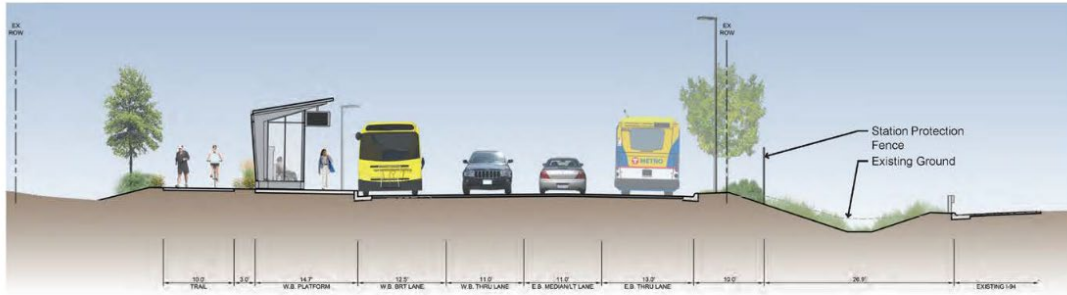
Ces, tam sim no txoj kev Gold Line yuav mus rau ntawm txoj kev Hadley mus rau txoj kev 4th Street, nov yog txoj kev 4th Street.

Greenway Avenue Station Site Plan

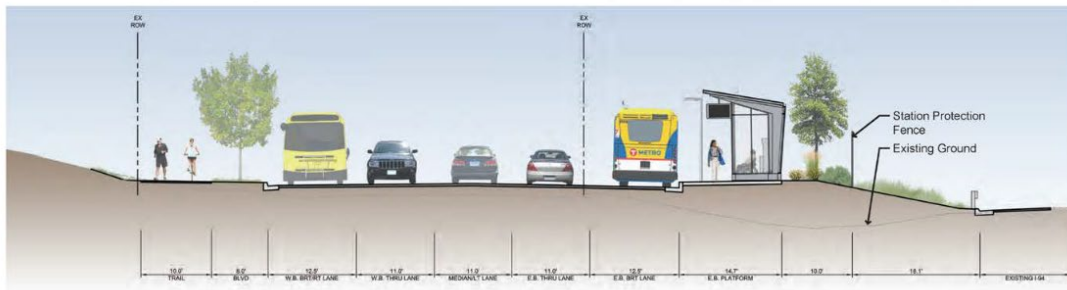


[Tsis muaj lus sib tham; tso nkauj mloog. Qhia txog daim duab slide: Daim duab no pom cheeb tsam txhim kho chav nce tsheb npav nyob. Cov kev no yuav muaj tis npe hu ua A thiab B yog sau rau hauv plawv ntawm cov ntu kev tsheb npav thiab tsheb taug (saib ntawm cov duab slides hauv qab no).]

Greenway Avenue Station Cross Sections A & B



Section A-A: WB Platform (Looking East)

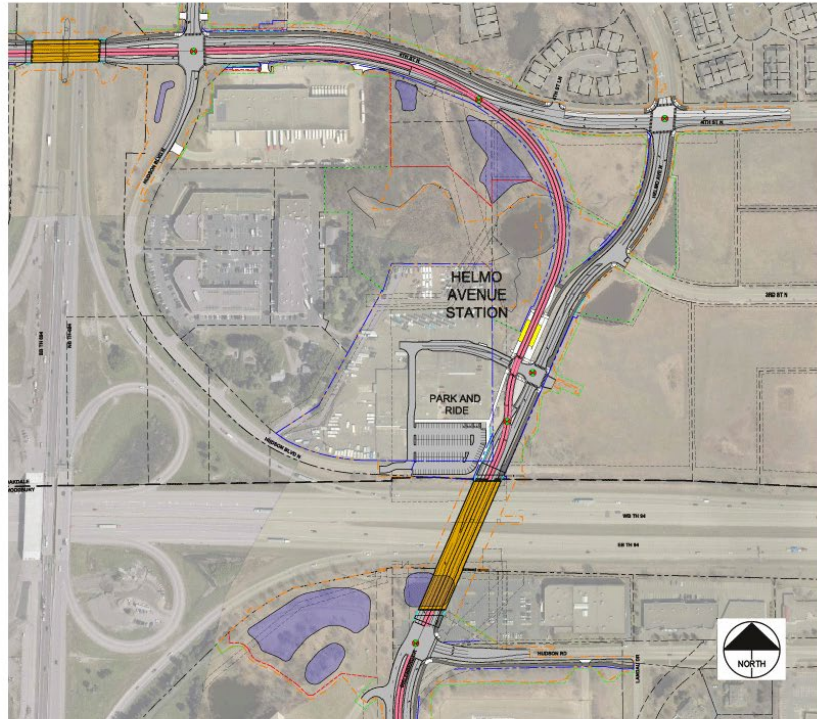


Section B-B: EB Platform (Looking East)

0 2.5 5 10
DRAFT - WORK IN PROCESS

[Tsis muaj lus sib tham; tso nkauj mloog. Qhia txog daim duab slide: Cov kev no yuav muaj tis npe hu ua A thiab B yog sau rau hauv plawv ntawm cov ntu kev tsheb npav thiab tsheb taug.]

Helmo Avenue Station



Peb tseem nyob hauv lub nroog Oakdale thiab koj kuj pom mentsis nyob ntwam sab ceg kaum no yog tus choj ntwam txoj kev 4th Street, uas yuav muab hloov ua kev rau cov tsheb npav siv, cov kev rau cov tsheb me siv, nrog rau cov kev rau neeg taug rau pej xeeb siv.

Cajj khau muaj log thiab tsheb kauj vab. Qhov nov, koj yuav pom cov kev xim paj yeeb thiab xim tus ntses salmon rau cov tsheb npav siv xwb yuav mus sib txuas rau cov kev uas koj pom niaj nhub no.

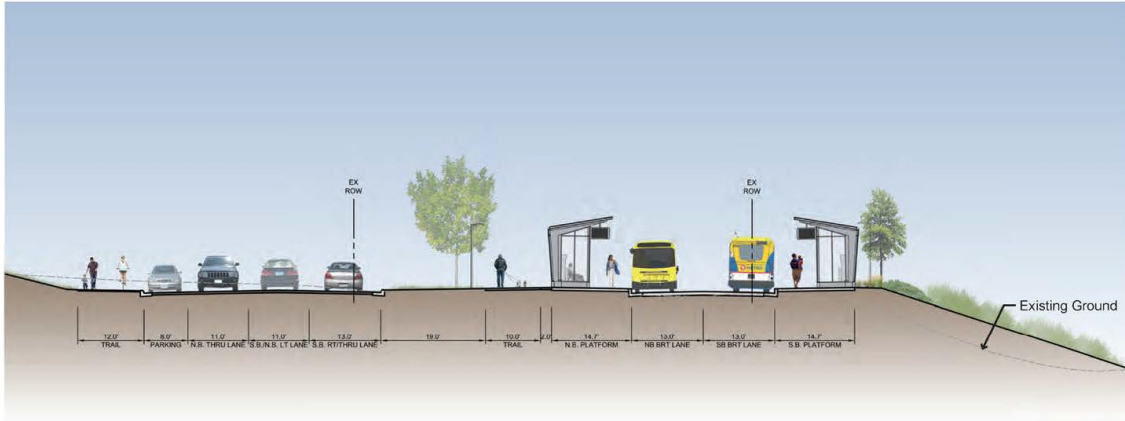
Ces, yuav mus nyob ua ke nrog rau txoj kev Hudson thiab Helmo Avenue hauv Oakdale Nov yog qhov peb yuav tsim ib lub chaw nce tsheb npav ntwam txoj kev Helmo Avenue thiab ib qhov chaw nres tsheb es mus nce tsheb tshiab. Txoj hauj lwm no yuav tauj ntxiv mus rau lwm txoj kev sib txuas tshiab. Nov yog tus choj tshiab uas yuav txuas txoj kev Helmo Avenue hauv Oakdale mus rau txoj kev Bielenberg Drive hauv Woodbury thiab qhov no, muaj ntsis khw li tus choj ntwam txoj kev 4th Street, Nov yuav yog tus choj tshiab, tab sis yuav ib txoj kev rau cov tsheb npav siv, yuav muaj cov kev rau cov tsheb me siv, nrog rau cov neeg taug kev.

Helmo Avenue Station Site Plan



[Tsis muaj lus sib tham; tso nkauj mloog. Qhia txog daim duab slide: Daim duab no pom cheeb tsam txhim kho chav nce tsheb npav nyob. Txoj kab tis npe A yog kev si tshuam ntawm cov tsheb thiab tsheb npav.(saib ntawm cov duab slides hauv qab no).]

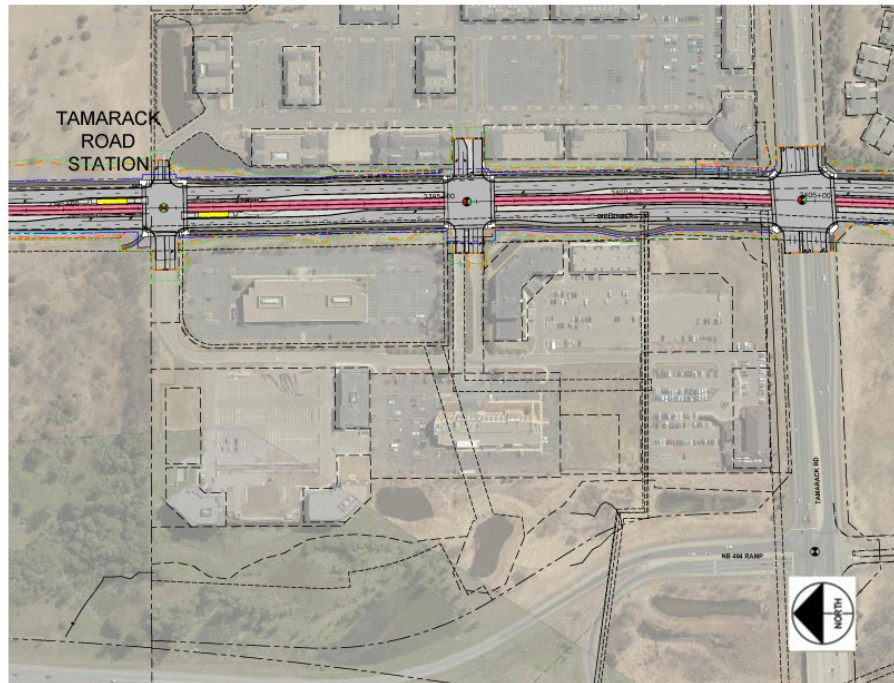
Helmo Avenue Station Cross Section A



Section A-A (Looking South)

[Tsis muaj lus sib tham; tso nkauj mloog. Qhia txog daim duab slide: Nov yog cov kev sib tshuam ntawm cov tsheb thiab tsheb npav, raws li tau khij ntawm txoj kab A ntawm daim ntawv yauv npaj tsim chaw nce npav.]

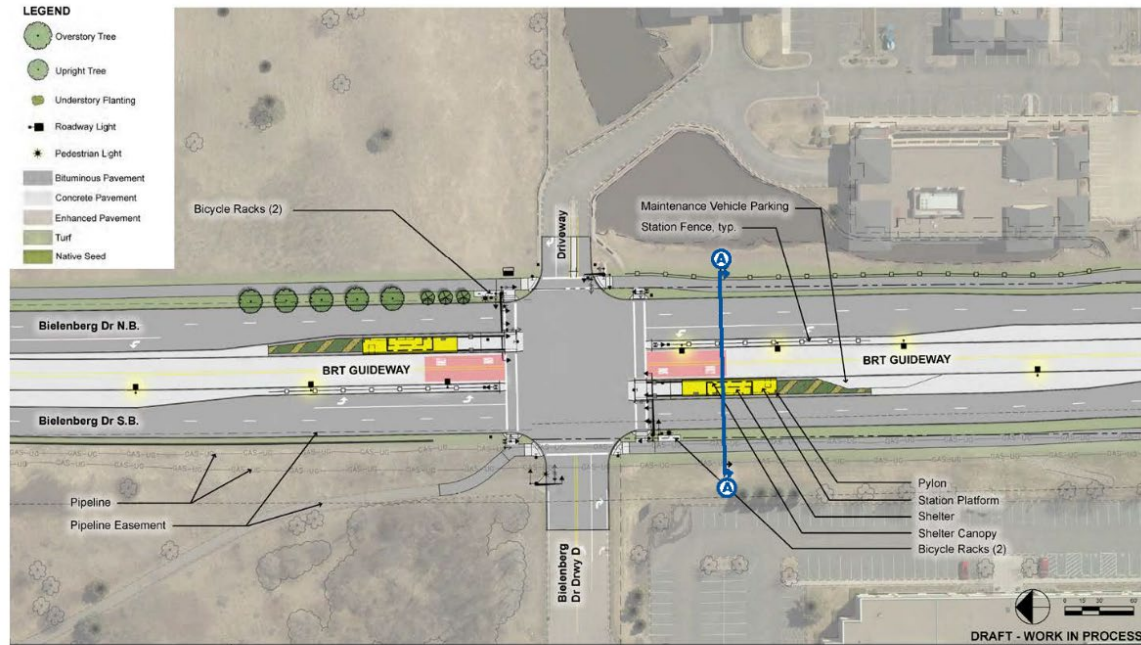
Tamarack Station



Ces tam sim no, nov txuas tau lub nroog Oakdale mus rau Woodbury. Mus tob zog rau hauv lub nroog Woodbury, pev yuavm us txog lub chaw nce tsheb npav Tamarack. Ces qhov chaw nce tsheb npav no, Tamarack Road yog nyob ntawm no. Ces nyob ze ntawm ntug ntawm txoj kev Tamarack.

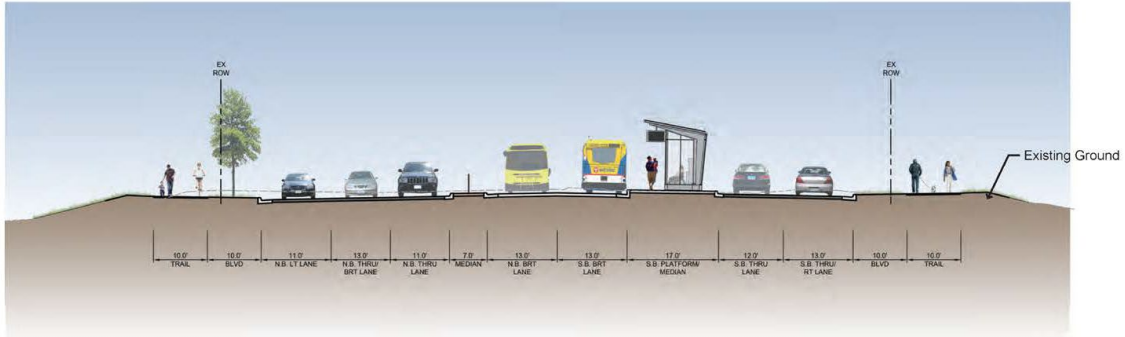
Tab sis nov yog nyob ntawm Bielenberg Drive ze ntawm Tamarack Hills Cov Khw Muag Khoom thiab lwm cov lag luam nyob rau cheeb tsam no, thiab koj yuav pom cov kev uas yog xim paj yeeb nyob hauv plawv kev. Ces cov tsheb npav yuav mus hauv plawv kev ntawm txoj kev Bielenberg Drive.

Tamarack Station Site Plan



[Tsis muaj lus sib tham; tso nkauj mloog. Qhia txog daim duab slide: Daim duab no pom cheeb tsam txhim kho chav nce tsheb npav nyob. Txoj kab tis npe A yog kev si tshuam ntawm cov tsheb thiab tsheb npav.(saib ntawm cov duab slides hauv qab no).]

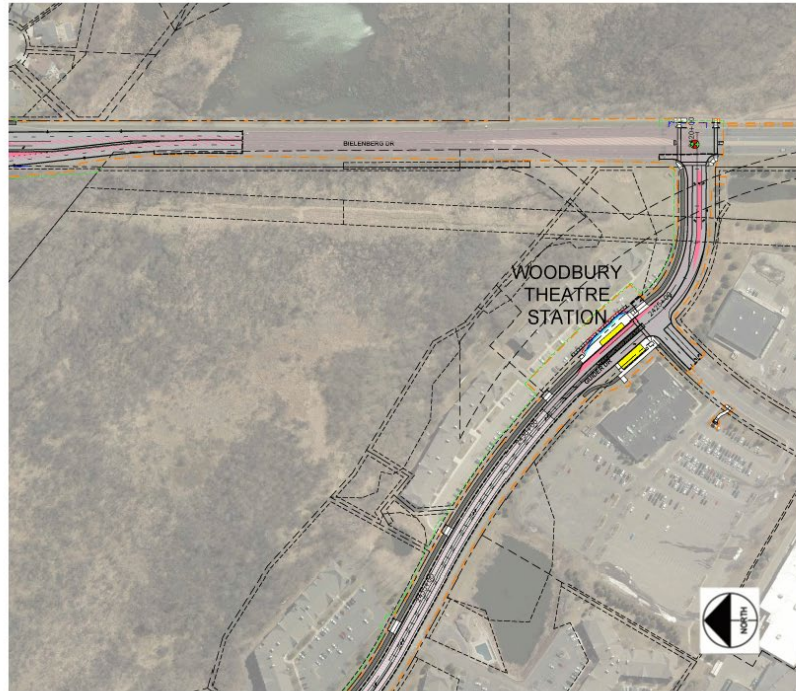
Tamarack Station Cross Section A



Section A-A (Looking South)

[Tsis muaj lus sib tham; tso nkauj mloog. Qhia txog daim duab slide: Nov yog cov kev sib tshuam ntawm cov tshab thiab tshab npav, raws li tau khij ntawm txoj kab A ntawm daim ntawv yauv npaj tsim chaw nce npav.]

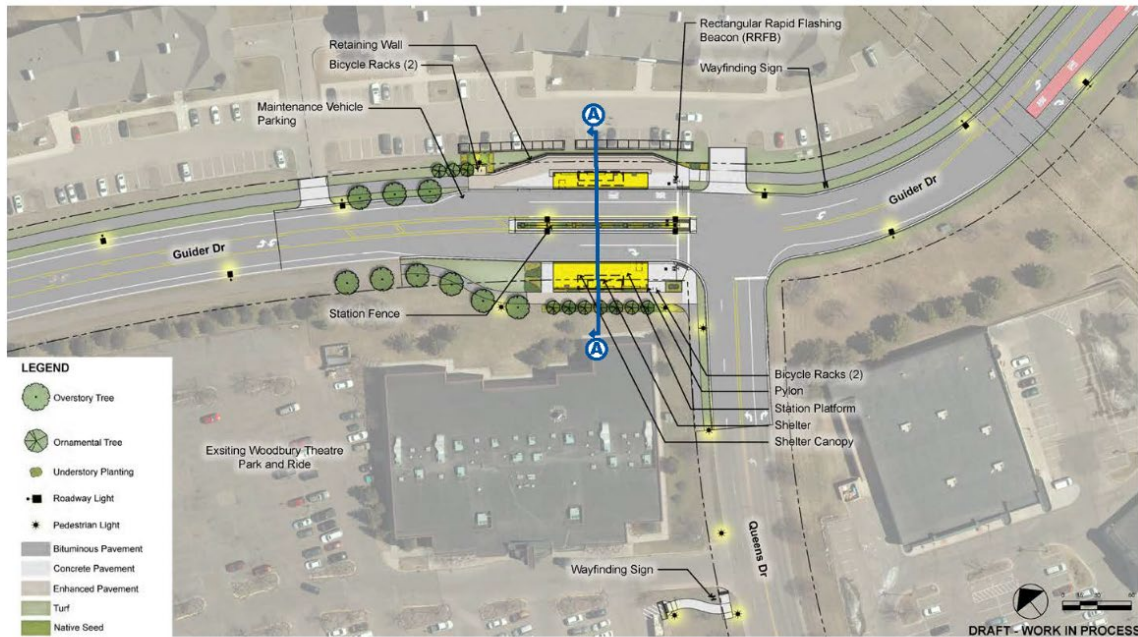
**Woodbury
Theatre Station**



Mus tshab plaws lub nroog Woodbury, lub tsheb npav yuav tsis siv nws txoj kab, ces peb yuav tsis txhim kho cov kev rau tsheb npav rau qhov chaw no Ua yog Tamarack Nature Preserve. Ces lub tsheb npav yuav siv cov kev luv fais nyob rau cheeb tsam no, ces peb yuav mus rau nram txoj kev Guider Avenue mus rau lub tuam tsev saib yeeb yaj kiab Woodbury Theatre.

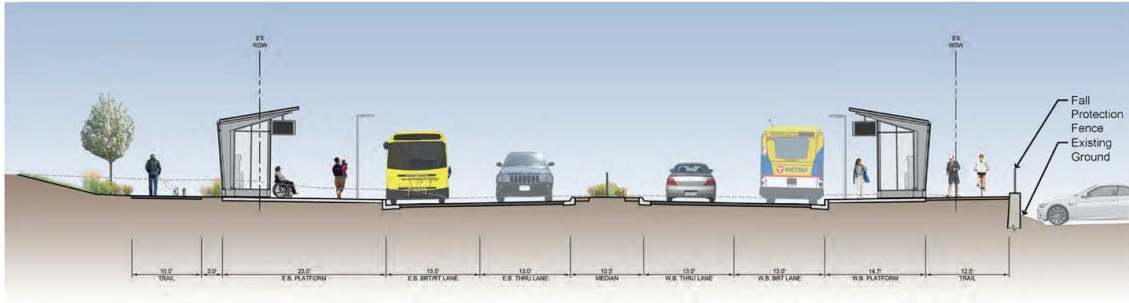
Ces txoj kev Gold Line yuav muaj ib qhov chaw nce tsheb npav nyo ntawm txoj kev Guider, nyob sab nraum zoo ntawm lub tuam tsev saib yeeb yaj kiab Woodbury Theatre. Tsis kuv, qhov tseeb kuv yuav mus rau hauv qhov chaw nres tsheb es cia qhov chaw nres thaib nce tsheb ntawv nyob twb ywm. Txoj kev Gold Line mam li mus rau nram txoj kev Guider Drive mus txog kev kawg nram lub nroog Woodbury.

Woodbury Theatre Station Site Plan



[Tsis muaj lus sib tham; tso nkauj mloog. Qhia txog daim duab slide: Daim duab no pom cheeb tsam txhim kho chav nce tsheb npav nyob. Txoj kab tis npe A yog kev si tshuam ntawm cov tsheb thiab tsheb npav.(saib ntawm cov duab slides hauv qab no).]

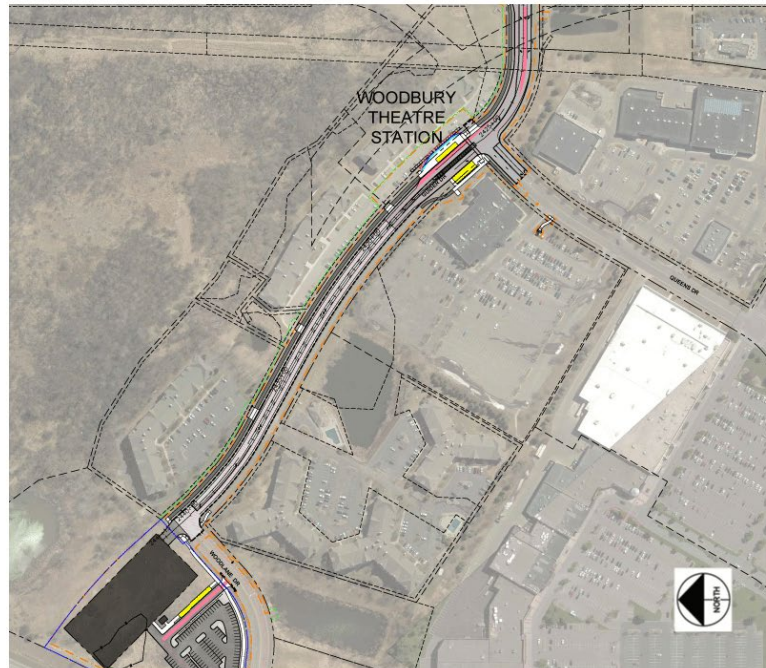
Woodbury Theatre Station Cross Section A



Section A-A (Looking West)

[Tsis muaj lus sib tham; tso nkauj mloog. Qhia txog daim duab slide: Nov yog cov kev sib tshuam ntawm cov tshab thiab tshab npav, raws li tau khij ntawm txoj kab A ntawm daim ntawv yauv npaj tsim chaw nce npav.]

**Woodbury 494
Park & Ride Station**



Yog qhov chaw uas peb tsim kho qhov chaw nres thiab nce tsheb tshiab. Thiab txoj dej num hloov ntawm 15% yog qhov peb tsim kho kom qhov chaw nres thiab nce tsheb no ib nyuag loj mentsis kom nres tau ntau lub tsheb dua.

Ces qhov no yeej nyob sib txig ntawm txoj kev Gold Line.

East Side Saint Paul and Suburban Station Illustration



[Tsis muaj lus sib tham; tso nkauj mloog. Qhia txog daim duab slide: Nov yog tus qauv uas cov chav nce tsheb npav nyob ib ncig sab nraum plawv nroog St. Paul yuav zoo li ca.]

Website

www.metrotransit.org/gold-line

Phone

651-602-1955

Email

goldline@metrotransit.org

Social Media

Twitter: @GoldLineBRT

Facebook: @MetroTransitMN

Community Outreach Coordinator

Liz Jones
elizabeth.jones@metrotransit.org
651-602-1977



▲ BRT in bus-only lanes

▼ Example of a station



Thov txhob ua siab deb es hu tuaj rau kuv, thiab cov kev yuav tiv tauj tau kuv nyob rau daim duab kawg nkaus, thiab cov xov tseem ceeb qhia seb yuav raws qab txog txog txoj dej num no tau li cas. Thov txhob ua siab deb es hu tuaj rau kuv yog muaj tswv yim los yog lus nug uas koj muaj.

Thiab ua tsaug ntau uas tseem tuaj koom rooj sab laj no hauv computer thiab.