



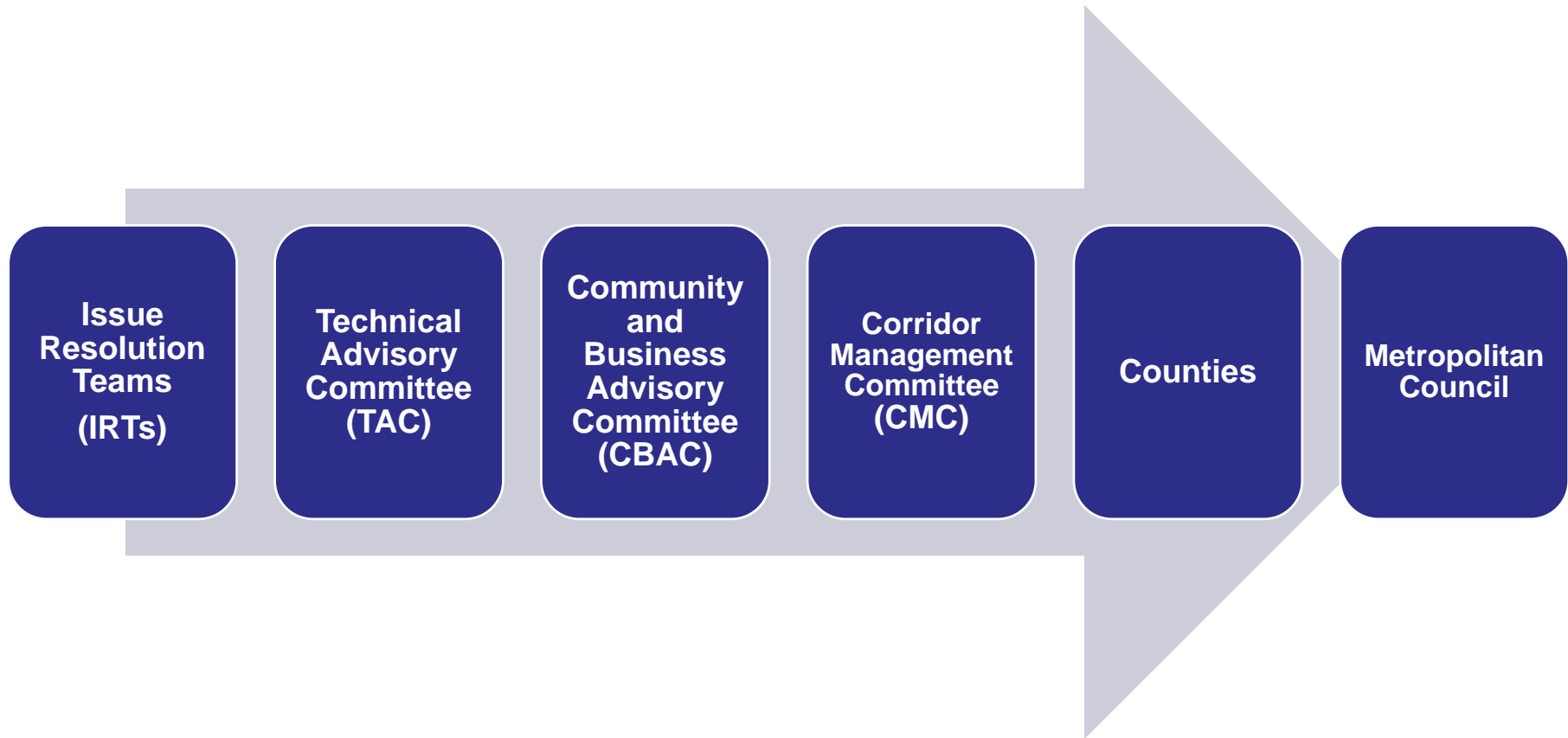
# METRO Gold Line BRT CBAC Meeting

April 23, 2020



# CBAC Roles and Responsibilities

# Gold Line Committee Structure

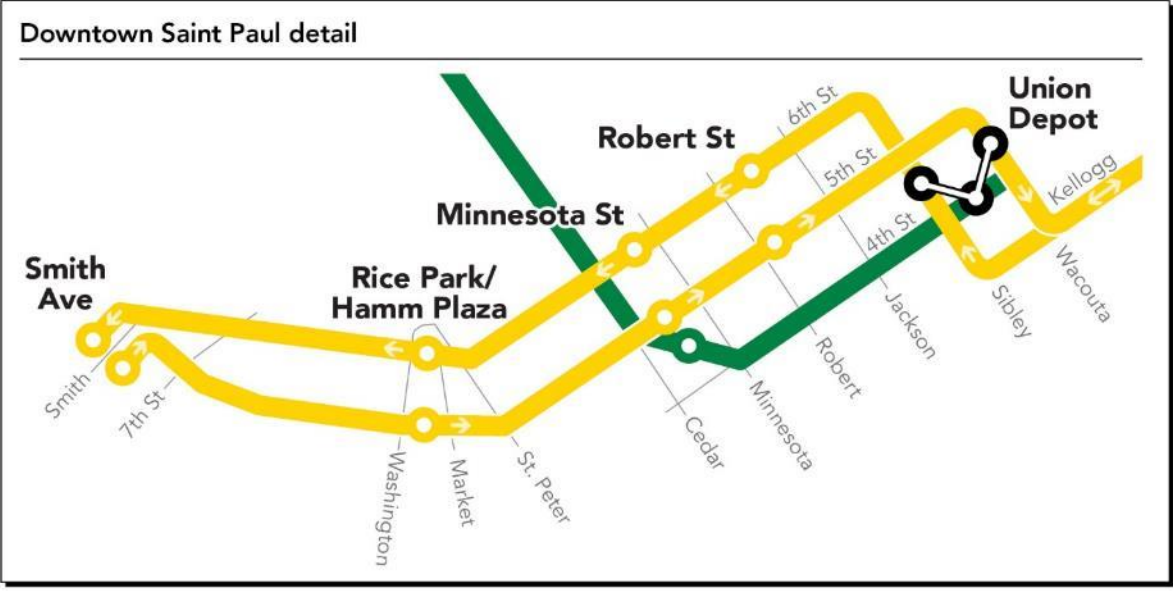


- Review and Discuss *Draft* CBAC Charter
- Purpose
  - Serve as a voice for the community
  - Advise the Corridor Management Committee
  - Provide input on design: stations, operations, bike and pedestrian, bus lane locations
  - Serve as information resource and liaison to community



# Gold Line Overview

# GBRT Corridor



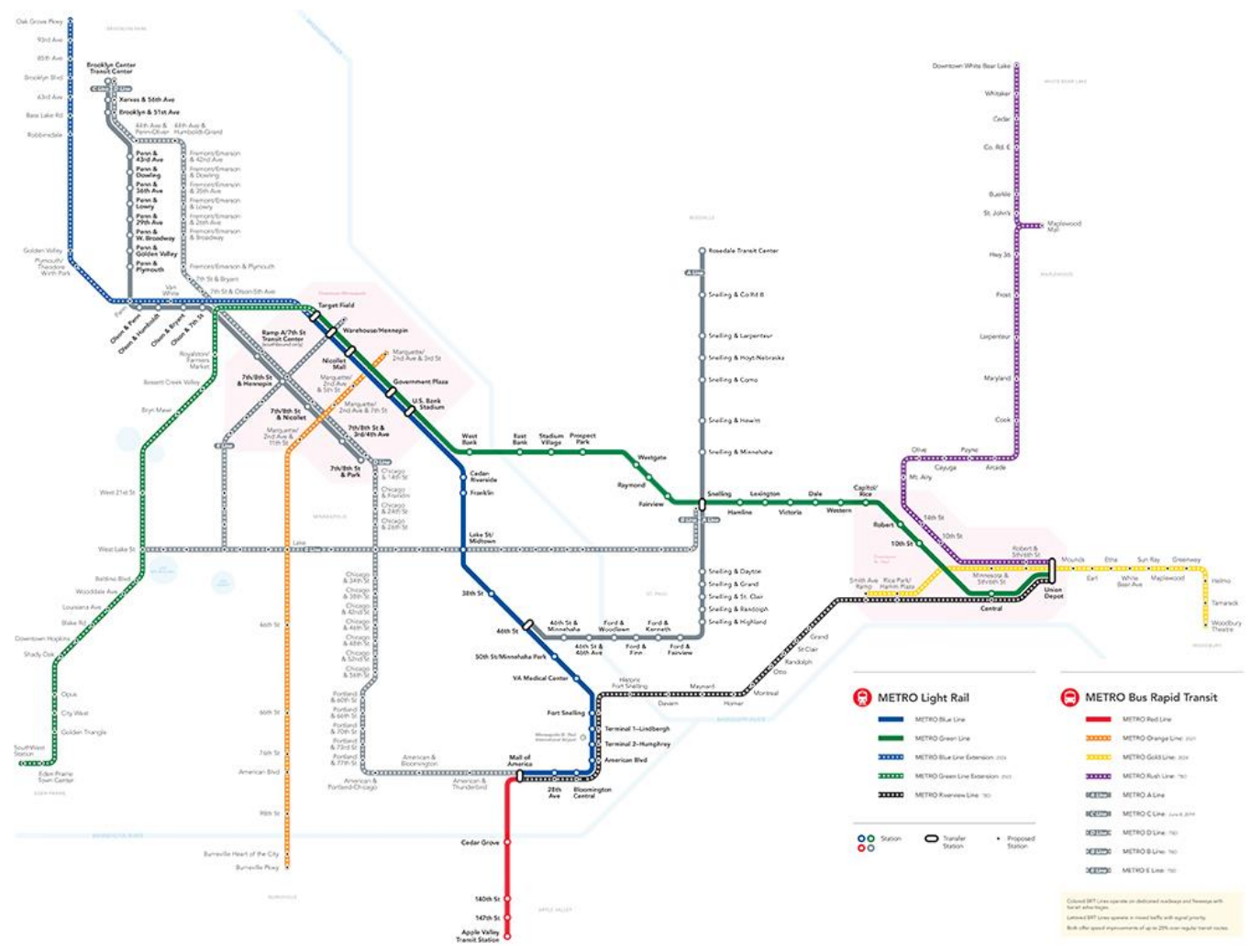
- METRO Gold Line (Bus Rapid Transit)
- METRO Green Line (Light Rail)
- Transfer Station
- Park & Ride

# METRO Network Connection



Fast. Frequent. All day. All yours.

Future Rapid Transit Network



- METRO Light Rail**
    - METRO Blue Line
    - METRO Green Line
    - METRO Orange Line
    - METRO Purple Line
    - METRO Silver Line
    - METRO Brown Line
  - METRO Bus Rapid Transit**
    - METRO Red Line
    - METRO Orange Line
    - METRO Green Line
    - METRO Blue Line
    - METRO Purple Line
    - METRO Silver Line
    - METRO Brown Line
- T Station  
T Transfer Station  
T Proposed Station

Colored BRT Lines operate on dedicated roadways and have right-of-way.  
 Limited BRT Lines operate in mixed traffic with signal priority.  
 Both offer speed improvements of up to 20% over regular transit routes.



# What is Bus Rapid Transit?



## BRT: Exclusive Bus-Only Lanes





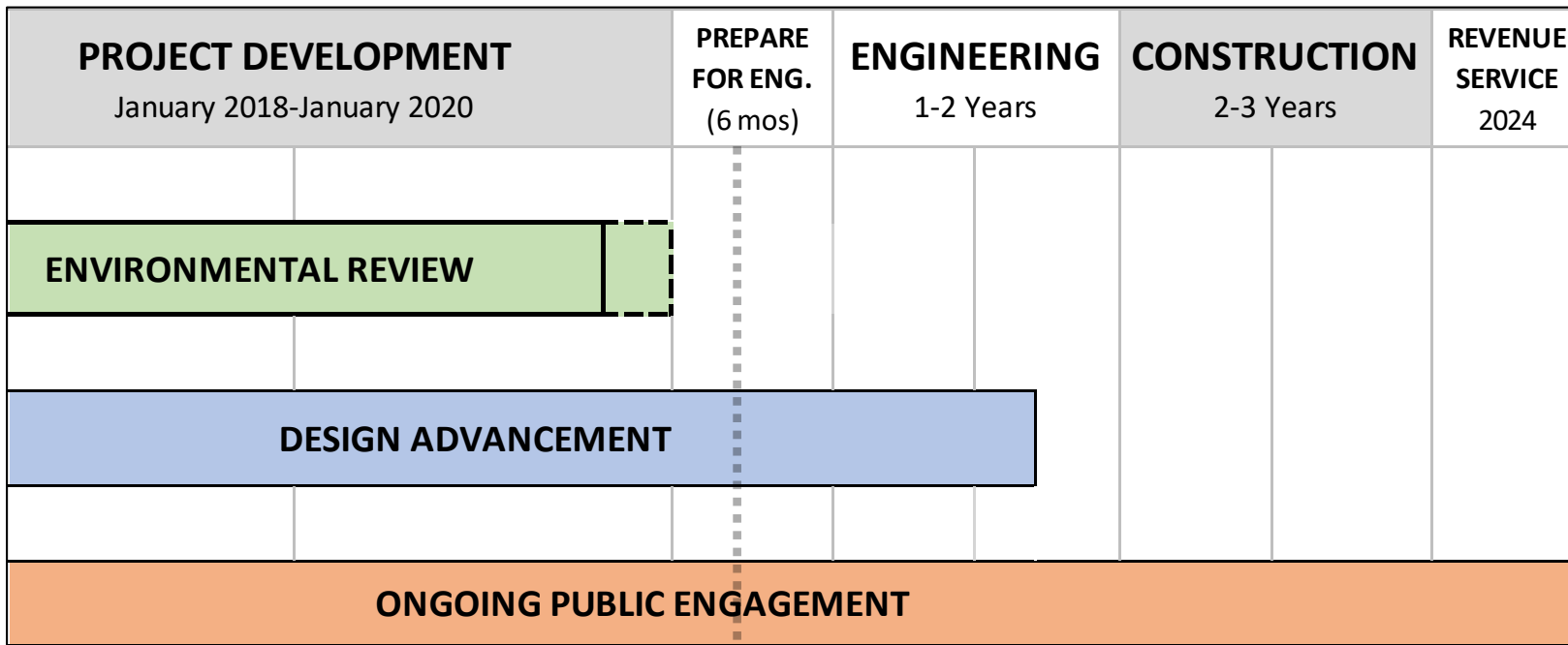
- Project Partners

- Metro Transit, a division of The Metropolitan Council
- Ramsey County
- Washington County
- St. Paul
- Maplewood
- Landfall
- Oakdale
- Woodbury
- MnDOT

- Key Staff

- Christine Beckwith, Project Manager, Metro Transit
- Lyssa Leitner, Deputy Project Manager, Washington County
- Ed Sanderson, Design and Construction Lead, MnDOT
- Liz Jones, Outreach Coordinator, Metro Transit

# Gold Line Bus Rapid Transit Project Timeline



WE ARE HERE

## Federal: Environmental Assessment (EA)

- Report required under the National Environmental Policy Act (NEPA)

## State: Environmental Assessment Worksheet (EAW)

- Discretionary EAW under Minnesota Environmental Policy Act (MEPA)

## Both EA and EAW

- Evaluates beneficial and adverse impacts to resource areas from the project
- Identifies solutions to avoid, minimize, and mitigate adverse impacts
- To inform the public and to assist federal and state agencies in their decision-making process
- Received Finding of No Significant Impact (FONSI) in early 2020

# Public Outreach & Engagement Approach



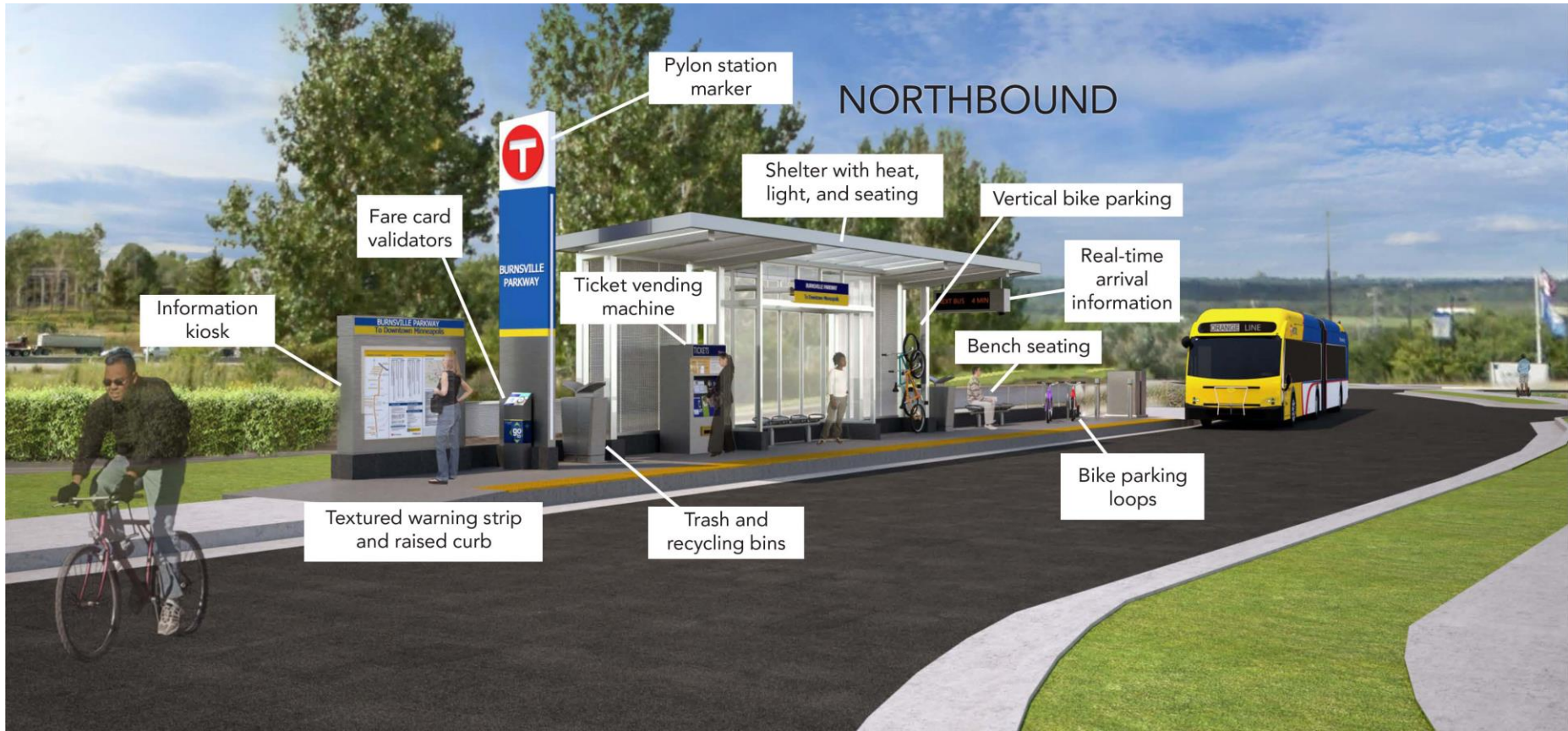
- Community events
  - Festivals, fairs, farmers' markets
- Pop-up's at community spaces
  - libraries, grocery stores, apartment complexes
- Individual meetings and presentations to businesses and community organizations
- Regular communications with resident and business property owners
- Project website, e-newsletter, social media, direct mail
  - [www.metrotransit.org/gold-line](http://www.metrotransit.org/gold-line)
  - @GoldLineBRT on twitter



# METRO Orange Line Station Concept



- Example of what will be on Gold Line Station platforms
- Image is of a METRO Orange Line Station



# Existing BRT Buses, Shelters and Stations



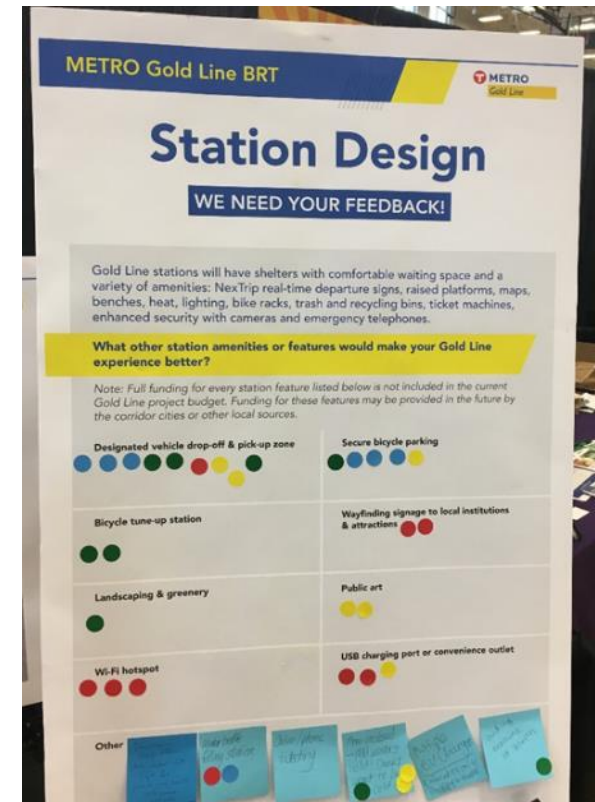
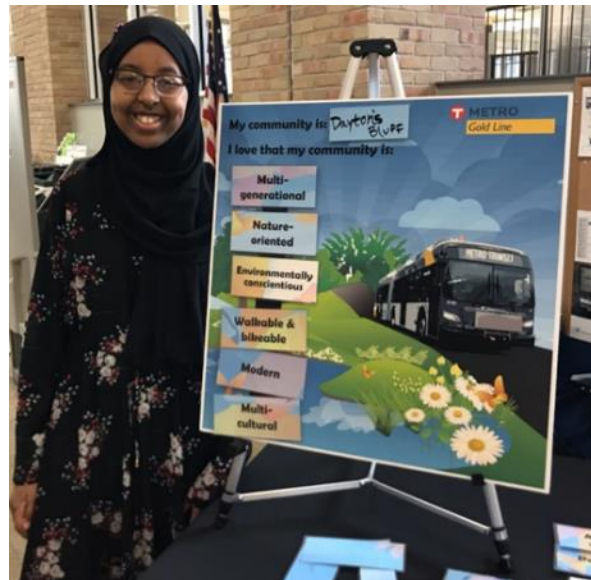


# Shelter Design Concept Input

- Outreach Activities (Q1/Q2, 2019)
- Station Workshops with DARTs (Q2, 2019)
- CBAC Input (Q2, 2019)
- TAAC Input (Q3, 2019)
- Station Area Design Advancement to inform 30% costs (Q2-Q4, 2019)
- Shelter Concepts (Q1 2020)



- Intent was to inform designers of what is important to each community before they started designing
  - Sample questions
    - What opportunities and challenges do you see with the current design?
    - How can the station design best contribute to community mobility and visual quality?
    - What is unique about the context and character of each station area?

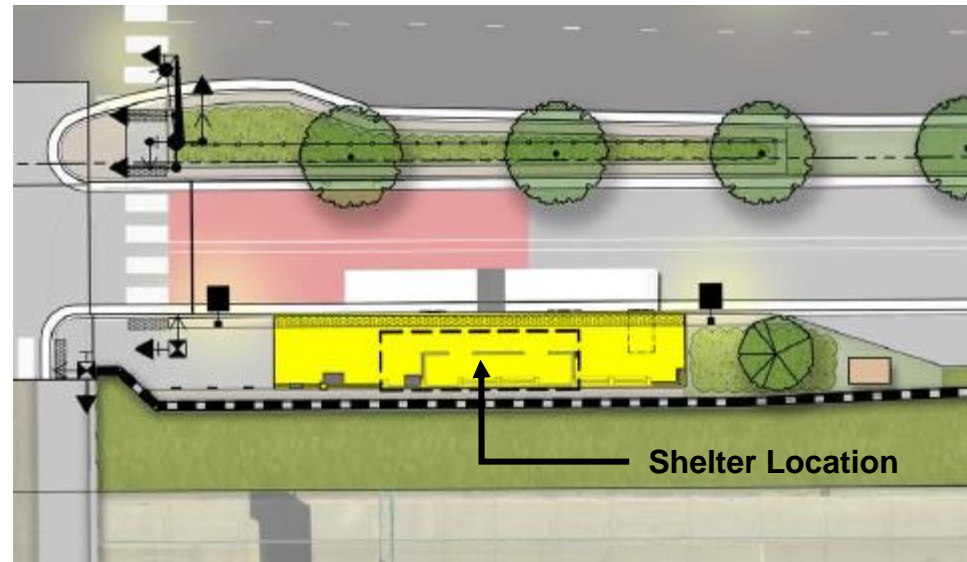


Design Principles	Stakeholder Comments
Identity	Consistent design between stations
Safety & Comfort	Well-lit station area Protection from wind and rain on all sides Heaters and protected seating, specifically for the disabled and elderly Consistent platform layout
Connectivity	Clear signage and sightlines for pedestrians
Context	Natural materials
Resiliency	Simple, durable, easily cleaned Able to withstand weathering and vandalism Simple to clean and touch-up Use standard glass size with frit glass pattern Light colors show dirt and graffiti

- Today: Review shelter design concept
  - What are the strengths you see?
  - Do you have any concerns?
  - Did we miss anything?
- Future design advancement:
  - Shelter Material/Color
  - Railings/Fences
  - Platform Pavement
  - Site Furnishings
  - Platform Lighting
  - Landscape



*Shelter Concept*



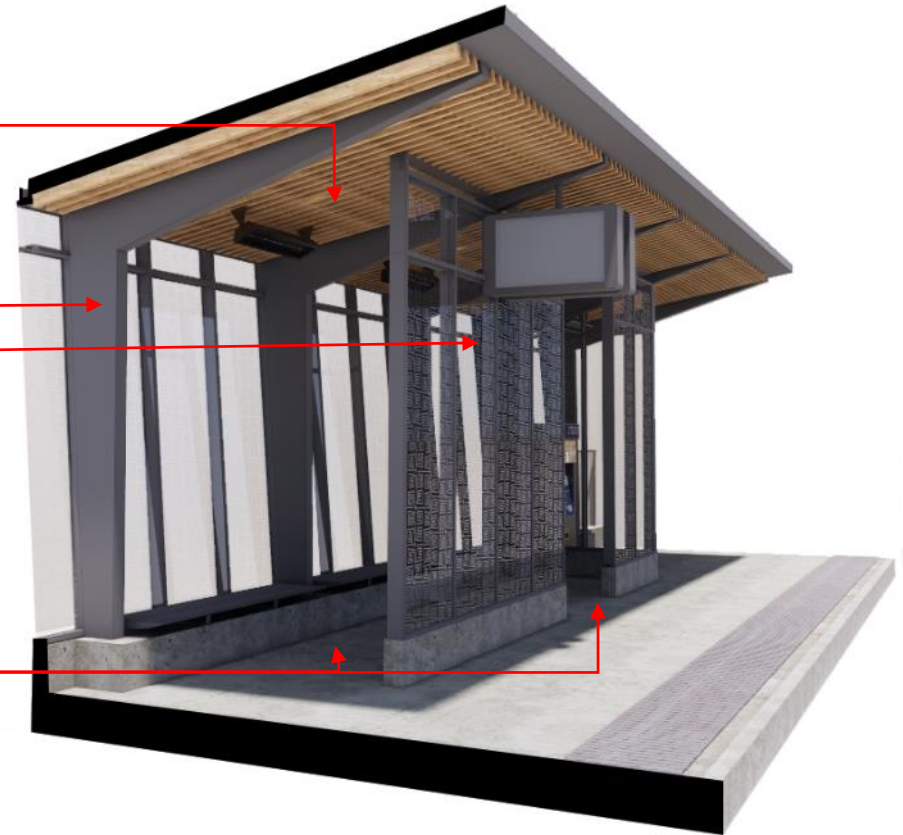
*Shelter is one part of the overall shelter site*

Security cameras with unobstructed view of platform

Integral LED lighting

Minimize columns and mullions to maximize views from and through the shelter

Multiple entries/exits



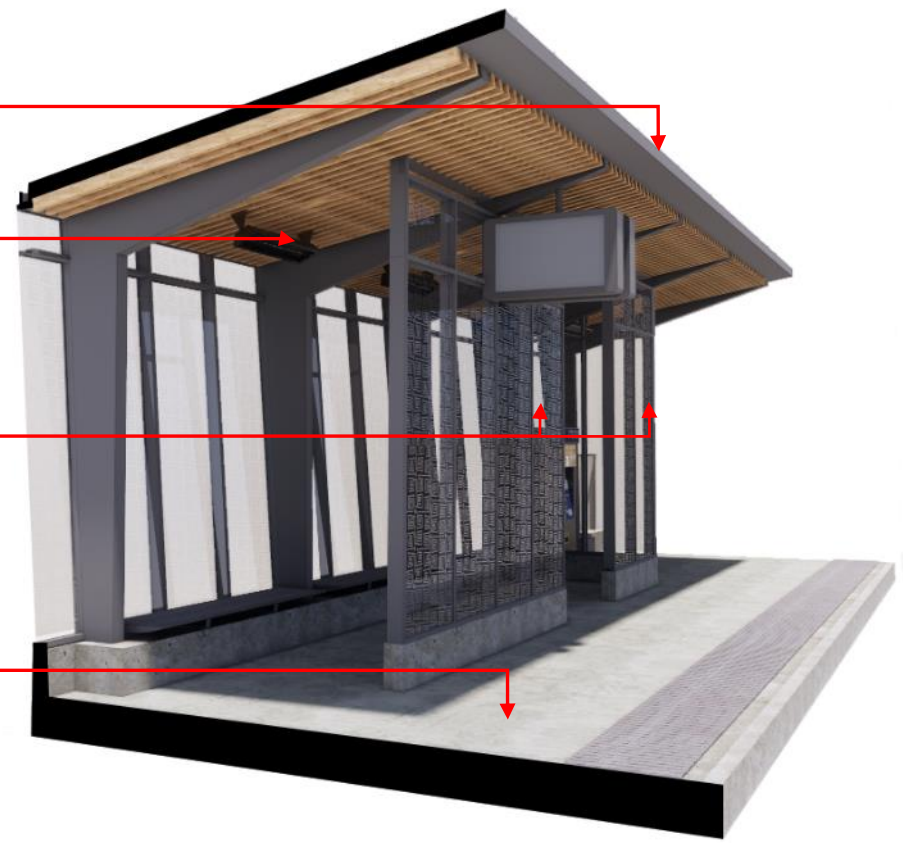
*Cutaway view of typical shelter*

Roof extends over  
boarding zone

Heaters

Weather screens on all four  
sides of shelter

Platform heating to aid  
snow removal



*Cutaway view of typical shelter*

Wood ceiling



Minimal structure



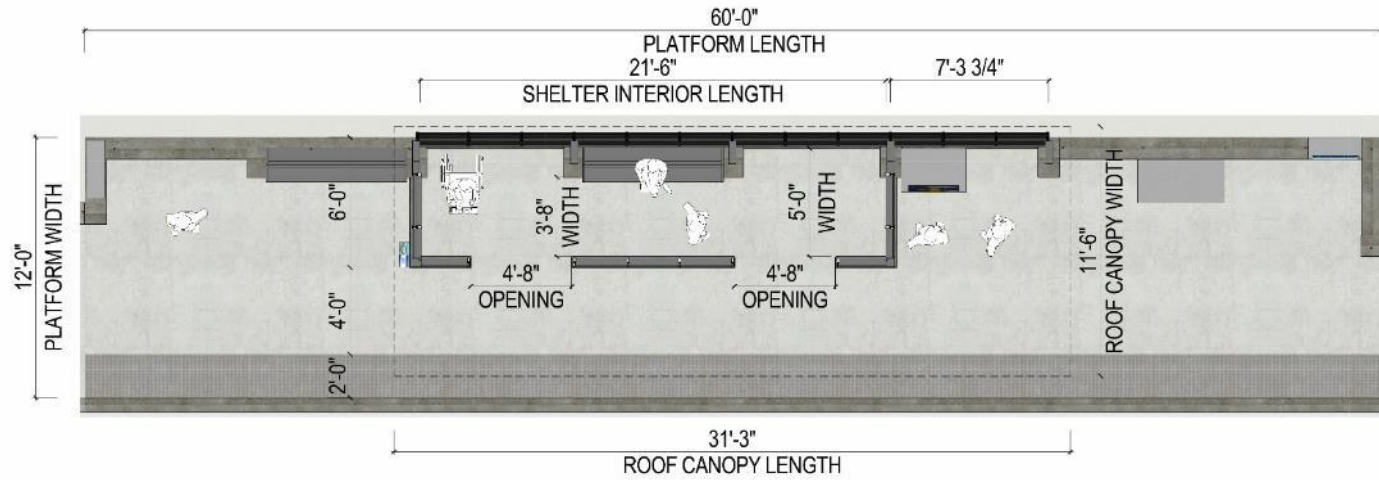
Clean lines and emphasis on transparency

Simple geometry

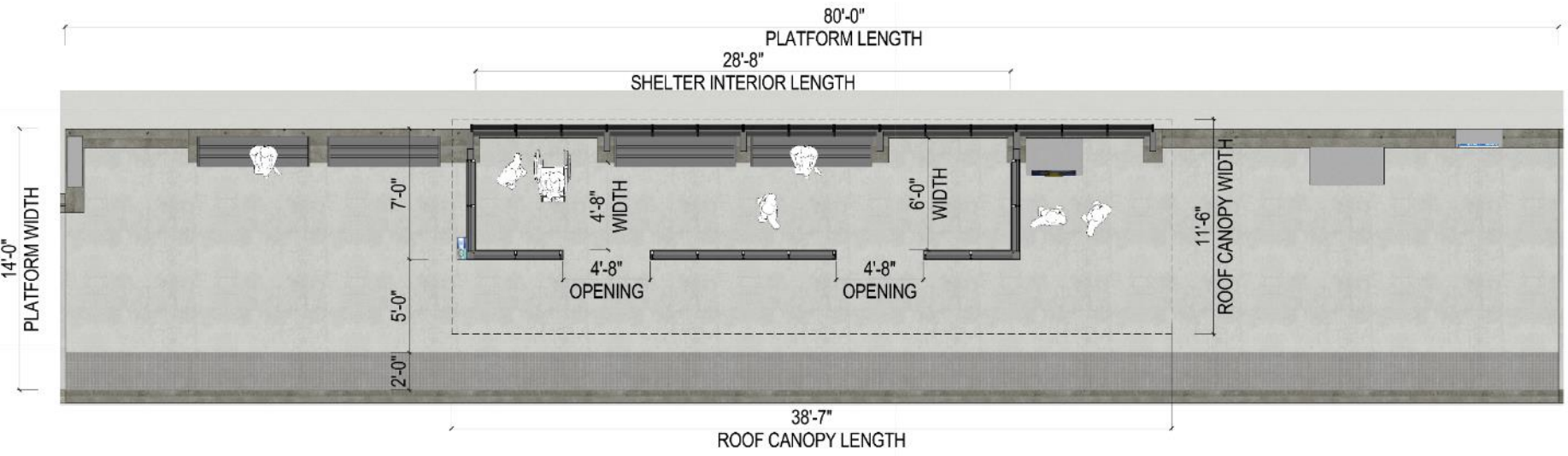


*Cutaway view of typical shelter*

# Shelter Design: Accessibility



*Downtown shelter*



*Standard shelter*













Platform will include additional lighting beyond the shelter

## Standing seam metal roofing

- Very durable, low maintenance
- Long history of use in the area, from farm buildings to transit shelters and park buildings



Northstar Platform, Minneapolis



Stonemill Farms Park, Woodbury

## Steel structure

- High strength, smaller member sizes, lower material and fabrication costs
- Dark, shop-applied finish - corrosion-resistant, and easily field-repaired
- Color drawn from similar treatments of exposed metal in the vicinity



Discovery Center, Oakdale



Union Station, St. Paul

## Wood soffit

- Adds an element of warmth, natural environment
- Relates to many local landmarks
- Design of wood slats allows concealment and integration of conduits and lighting



CHS Field, St. Paul

Image by Paul Crosby



Nature Center, Oakdale

- What are the strengths you see?
- Do you have any concerns?
- Did we miss anything?





For more information:

[www.metrotransit.org/gold-line-project](http://www.metrotransit.org/gold-line-project)

Liz Jones

Community Outreach Coordinator

[Elizabeth.Jones@metrotransit.org](mailto:Elizabeth.Jones@metrotransit.org)

651-602-1977

Lyssa Leitner

Deputy Project Manager

[Lyssa.Leitner@metrotransit.org](mailto:Lyssa.Leitner@metrotransit.org)

651-602-1044