



METRO Gold Line BRT CBAC Meeting

May 29, 2018



- Welcome and Introductions
- Project Overview
- CBAC Roles and Responsibilities
- 2018-2019 Look Ahead
- Questions/Discussions

- Name
- Station you represent
- Business or residential representative
- Why do you want to be a part of the CBAC?



Project Overview

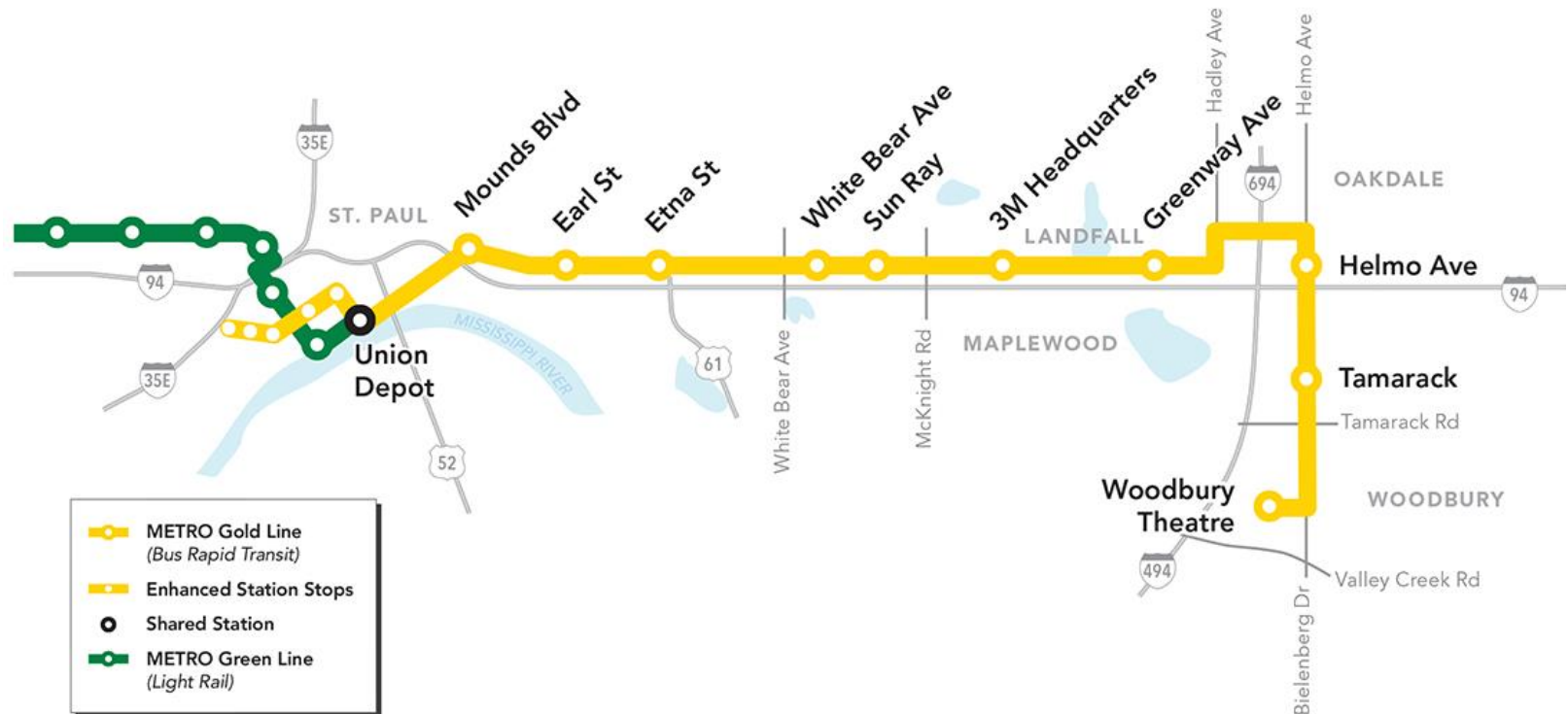
Twin Cities METRO System Map



Gold Line BRT Overview



- 8,000 Est. Daily Riders (2040)
- \$420M Est. Capital Cost (YOE)
- \$5.1M Annual Operating Cost
- Opening 2024
- Serving the East Metro:
 - 2 counties, 5 municipalities
 - 301,000 jobs (2040)
 - 522,000 people (2040)



BRT: Exclusive Bus-Only Lanes





- Project Partners

- Ramsey County
- Washington County
- St. Paul
- Maplewood
- Landfall
- Oakdale
- Woodbury
- MnDOT

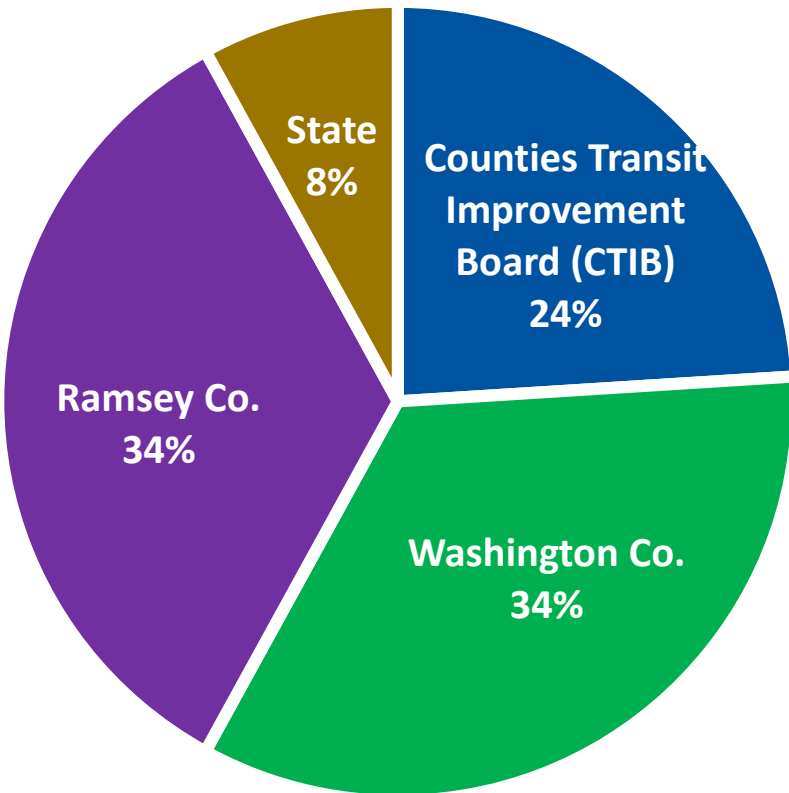
- Key Staff

- Christine Beckwith, Project Manager, Metro Transit
- Lyssa Leitner, Deputy Project Manager, Washington County
- Marc Briese, Design and Construction Lead, MnDOT
- Liz Joes, Outreach Coordinator, Metro Transit

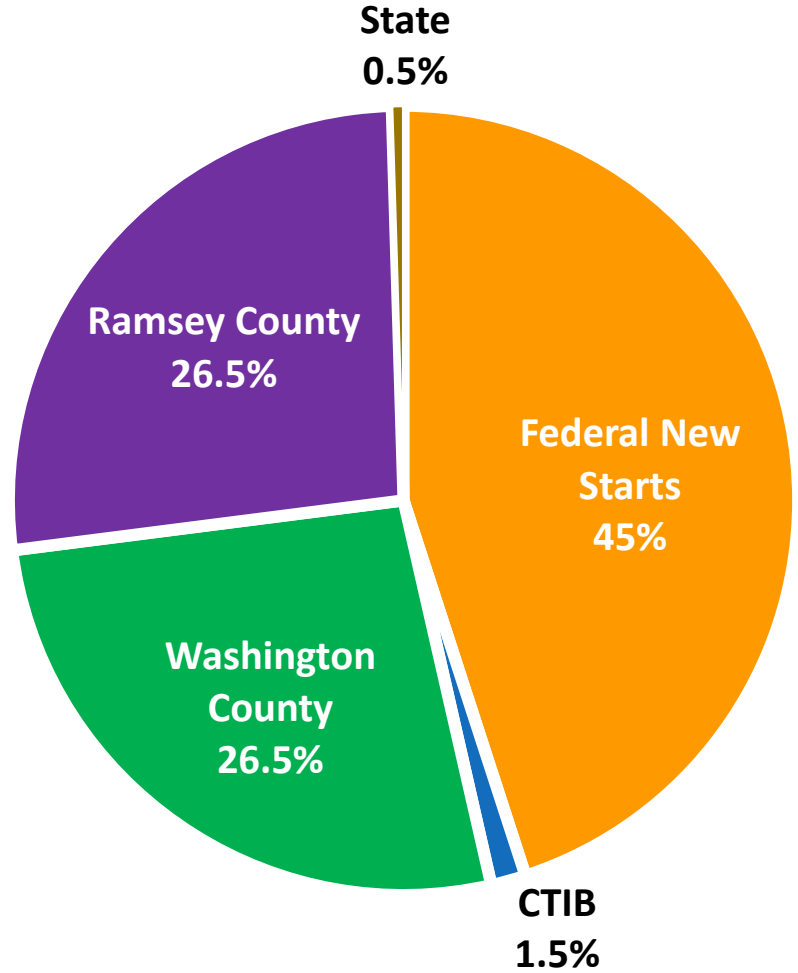
Cost Update



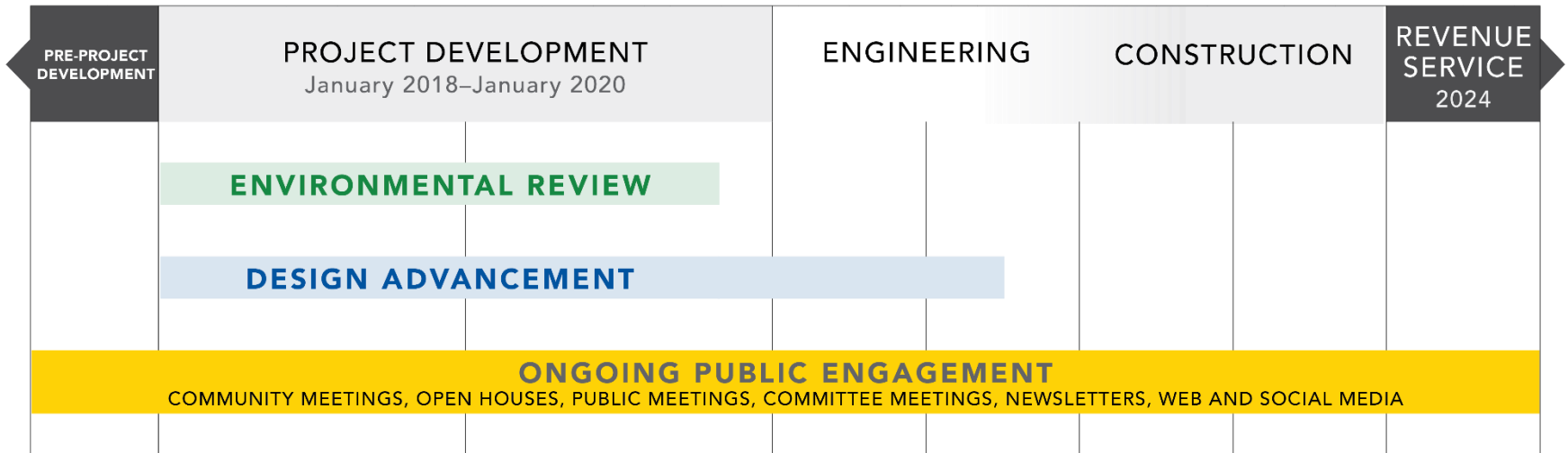
2018-2019 Funding
(\$25M approved, authorized)



Overall Funding
(\$420M anticipated)



Gold Line Bus Rapid Transit Project Timeline



Tier 1 goals must be considered first

Improve Mobility (Ridership & Travel Time)

Cost-Effective & Economically Viable

Support Economic Development

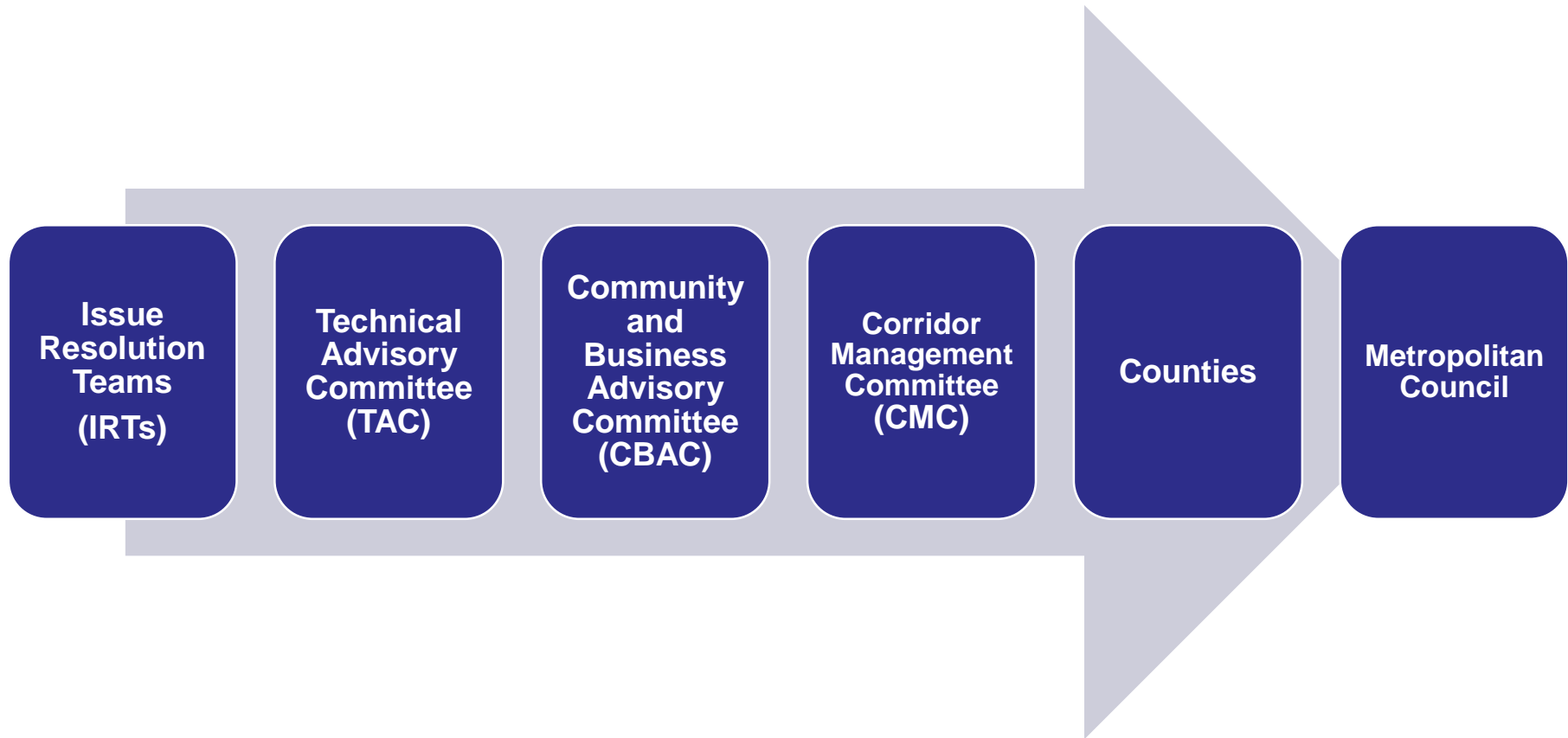
Protect the Natural Environment

Preserve & Protect Quality of Life



CBAC Roles and Responsibilities

Gold Line Committee Structure



- Review and Discuss *Draft* CBAC Charter
- Purpose
 - Serve as a voice for the community
 - Advise the Corridor Management Committee
 - Provide input on design: stations, operations, bike and pedestrian, bus lane locations
 - Serve as information resource and liaison to community

- Meeting Date and Schedule
 - Monthly meetings
 - Discuss reoccurring meeting schedule
- CBAC Leadership
 - Co-Chairs represent a corridor-wide perspective (one business and one residential rep)
 - Lead committee through their tasks and ensure charter compliance
 - Identify agenda topics
 - Serve on Corridor Management Committee
- Appointing Co-Chairs
 - Send one-paragraph statement of interest to Liz Jones by June 15
 - Metropolitan Council Chair will select Co-Chairs by next meeting

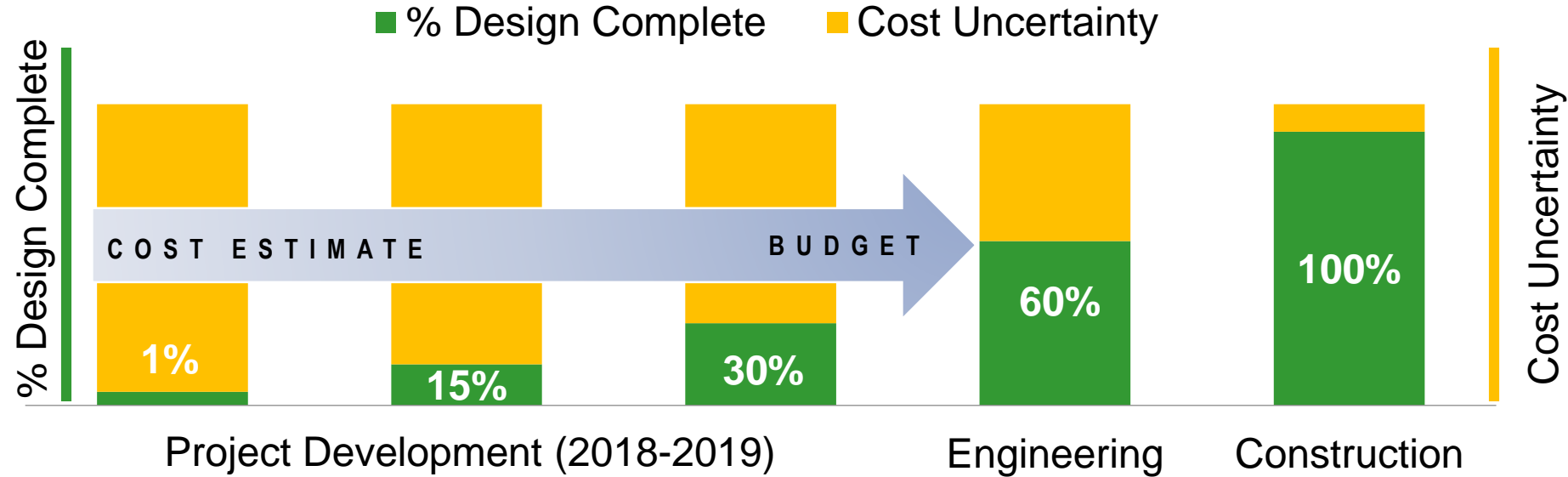


2018-2019 Look Ahead

- Exact locations of stations
- How the bus lanes fit with existing road lanes
- Locations of bike and pedestrian elements
- Station sizing and what goes on each station platform
- Cost update
- Update data to get federal program rating

- CBAC Input to Design and Engineering:
 - Ask questions and provide input on design options
 - Bring perspective of your community
 - Help technical team ensure information is clear to wide range of audiences

Cost Uncertainty by Project Phase



- Environmental Review Analyzes Potential Impacts
- Comply with federal and state laws
 - Land Use
 - Community Character
 - Property
 - Business
 - Historic properties
 - Parks
 - Visual
 - Safety
 - Transportation
 - Water
 - Soils
 - Plants
 - Animals
 - Noise
 - Contaminated Sites
 - Air Quality

Now to Fall 2018

- Identify what design elements need to be included in environmental review process
- Update design
- Public outreach to confirm design

Fall 2018- Summer 2019

- Analyze design elements for environmental resource areas
- Agency (federal, state, local) technical and legal review

Summer – Fall 2019

- Public comment period on environmental document
- Respond to public comments
- Environmental decision

- Pre 2018: Over 500 stakeholder meetings
- 2018-2019:
 - Small Group to Large Group Public Meetings (tailored to specific needs of each community group)
 - Project website, online newsletter, social media
 - Other materials as-necessary
 - Update CBAC on public comments the project receives
- Community Outreach Coordinator (Liz Jones)
 - Available to answer questions and relay feedback
 - Transparency
 - Two-way communications
 - Call, e-mail, meet in-person



Next Steps

- Visit project website and review meeting materials
- Have conversations with friends, neighbors, coworkers, employees, etc about Gold Line
- Think about questions you or others have about project and how we can provide better information
- Submit short paragraph if you are interested in being a Co-Chair

- CBAC Input at next meeting:
 - Provide input on design options along route
 - Help technical team design the outreach process for engagement events in July



Questions and Public Comment Period

- Each CBAC meeting will have time for public comment
 - Public encouraged to attend CBAC meetings
 - Comments should be limited to 3 minutes
 - Comments will be summarized in CBAC meeting summary and Co-Chairs will present summary at CMC meetings
 - Comments should be presented in a respectful manner



For more information:
www.metrotransit.org/gold-line-project

Liz Jones
Community Outreach Coordinator
Elizabeth.Jones@metrotransit.org
651-602-1977