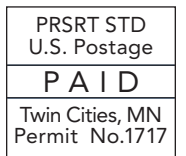


What to expect from construction

- Construction at intersections with a new station varies by location but may include some utility work, new road, sidewalk, traffic signal changes, shelters and other station features.
- Impacts may include intersection closure up to 1 month and/or lane restrictions up to 6 months.
- Sidewalks will remain open on at least one side of the road and pedestrian access will be maintained to homes and businesses.
- Crews will install underground conduit for a fiber optic network along the length of the whole corridor to link technology at stations.



PROJECT CONTACT:

Joanna Hubbard-Rivera
Outreach Coordinator
Joanna.Hubbard-Rivera@metrotransit.org
612-597-5222



612-568-1038
metrotransit.org/d-line-project

CONSTRUCTION OF THE METRO D LINE

BUS RAPID TRANSIT STARTS IN APRIL

